

PREPARED BY: DGR & ASSOCIATES CO., 1302 S. UNION STREET, P.O. BOX 511, ROCK RAPIDS, IOWA 51246 (712) 472-2531

UNITED STATES PUBLIC LAND SURVEY CORNER CERTIFICATE  
OF

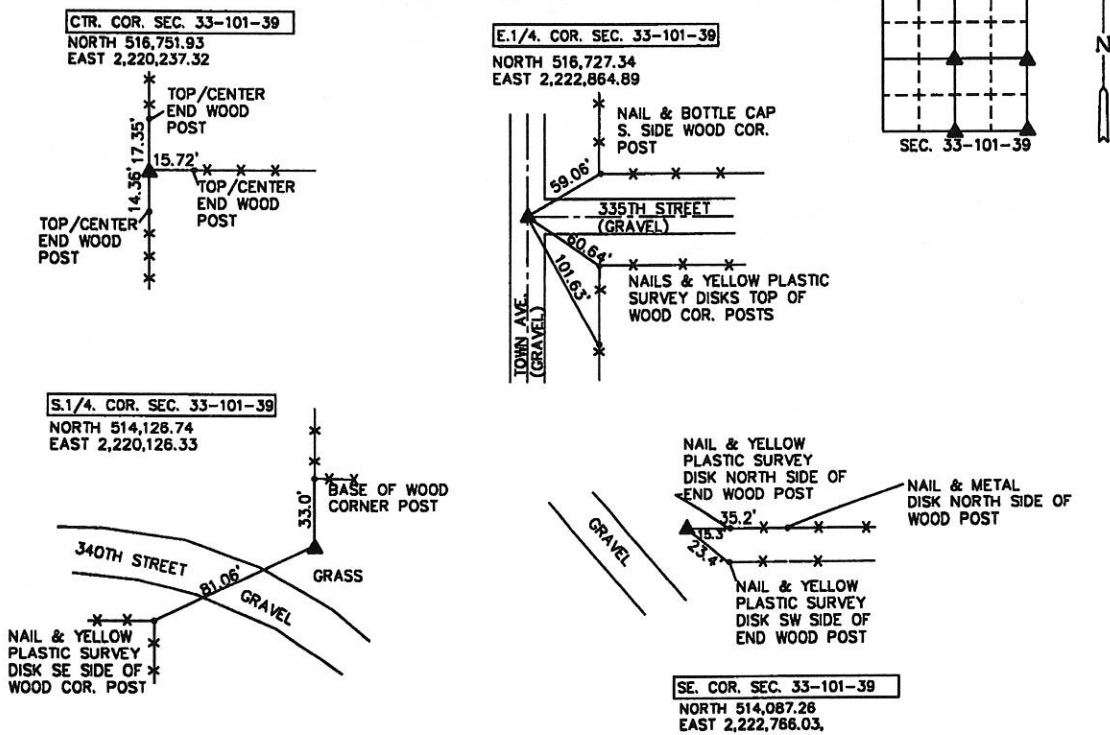
Land Survey Monuments situated in Section 33, Township 101, Range 39, of the Fifth Principal Meridian, NOBLES County, MINNESOTA.

Monument Description and Remarks:

- CENTER OF SECTION-SET 1/2" X 30' REBAR WITH YELLOW CAP NO. 17518 AT APPARENT FENCELINE INTERSECTION
- E.1/4 CORNER- FOUND 5/8" REBAR ABOUT 2' WEST OF C.L.-C.L. GRAVEL ROADS, 9" DEEP, FIT THE ONE REMAINING TIE FROM COUNTY ENGINEER'S RECORDS
- SE CORNER- FOUND 1" SOLID STEEL BAR, 1" DEEP, FITS ONE REMAINING TIE FROM COUNTY ENGINEER'S RECORDS
- S.1/4 CORNER- SET 1/2" X 30' REBAR WITH YELLOW CAP NO. 17518 33' SOUTH OF OLD WOOD CORNER POST AND IN LINE WITH LONG STANDING N-S FENCELINE.

PLAN - VIEW

COORD'S SHOWN ARE MINNESOTA SPC, SOUTH ZONE, US FOOT NAD 83 (1996)



I hereby certify that this land surveying document was prepared and the related survey work was performed by me or under my direct personal supervision and that I am a duly licensed Land Surveyor under the laws of the State of Minnesota.

Signature: Kevin D. Jongerijs  
 Name typed or printed: KEVIN D. JONGERIJS  
 Date: AUGUST 8, 2012 L.I.C. No. 17518

| Corners    | List Section | Corners to be Indexed Twp | Range |
|------------|--------------|---------------------------|-------|
| CENTER     | 33           | 101                       | 39    |
| E.1/4 COR. | 33           | 101                       | 39    |
| SE COR.    | 33           | 101                       | 39    |
| S.1/4 COR. | 33           | 101                       | 39    |

