

CERTIFICATE OF LOCATION OF GOVERNMENT CORNER

EAST QUARTER Corner of Section 12, Township 101 N., Range 40 W., 5th P.M.

STATE OF MINNESOTA, County of NOBLES

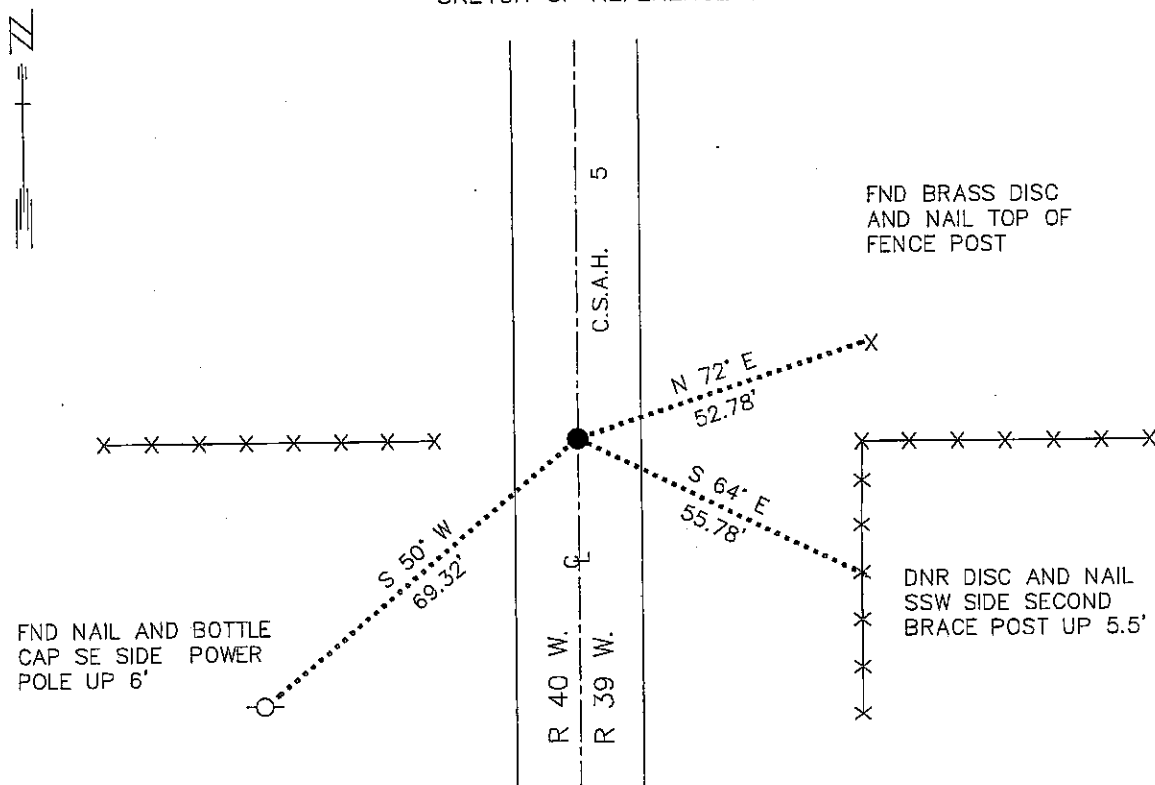
At the corner location shown on the sketch:

On 7/7/92 found an ILLEGIBLE PLASTIC CAPPED IRON MONUMENT DOWN 0.1'
DATE

left monument as found, lowered monument, removed monument (explain)

On _____ Placed a _____
DATE

SKETCH OF REFERENCE TIES



BEARINGS OBSERVED WITH COMPASS

Statement of evidence relative to this corner location is on back of page. 7/15/92
WMA01400

I hereby certify that this document and the data contained herein was prepared by me or under my direct supervision.

Bruce W. Shappell 7-24-92
SIGNATURE DATE

Registration No. 17003

Land Surveyor, Professional Engineer
 County Surveyor, County Engineer

OFFICE OF THE COUNTY RECORDER
County of Nobles

I hereby certify that this document was filed in the Co. recorders office at 8:05 A. M. on the 31st day of July A.D., 1992
County Recorder Jay Howard
By _____, Deputy
DOCUMENT NO. 248954

Tract 101 N. 40 W. 5th P.M. Comp. 17003
Photo 17003

East Quarter Corner Section 12, Township 101 North, Range 40 West, Page 1 of 2

The DNR Bureau of Engineering contacted the following for survey information:

Minnesota Secretary of State's Office
 Nobles County Recorder's Office
 Nobles County Highway Engineer's Office
 Sioux Engineering of Windom
 Madsen Land Surveying of Fairmont

1867 US General Land Office notes obtained from the Secretary of State's Office show the corner in a small marsh. A witness corner was set 1.00 chain (66.00 feet) South and marked with a post in a mound per instructions.

No Surveyor's Record Book A-2, page 226, obtained from the County Recorder's Office contains a survey by M. S. Smith. Survey shows that the witness corner was found and a stone was set in its place. The quarter corner was established 1.00 chain north of the witness corner and marked with a stone. The quarter corner was found to be:
 2661 feet from the northeast corner of Section 12
 2713.4 feet from the northeast corner of Section 13

1888 Surveyor's Record Book A-2, page 302, obtained from the County Recorder's Office contains a survey, surveyor not indicated. Survey shows a stone at corner but does not indicate if found or set. The corner is shown:
 2713.4 feet from the northeast corner of Section 13
 No information is given about the witness corner.

1922 May, Construction notes for CSAH No. 5 obtained from the County Highway Engineer's Office state that the corner was found but a description of a monument is not given.
 No information is given about the witness corner.

1948 Construction plan sheets for CSAH No. 5 obtained from the County Highway Engineer's Office show corner right of PI Station 495+56.22 but do not indicate what was found or set. A distance from the PI Station to the corner is not given. The PI Station is shown to be:
 2660.61 feet from the northeast corner of Section 12
 2711.09 feet from the northeast corner of Section 13
 No information is given about the witness corner.

No An unsigned Certificate of Location of Government Corner obtained
 Date from the County Highway Engineer's Office contains a compilation of records in the Engineer's Office that pertain to this corner.

The following is shown:

- 1888 - stone
- 1896 - stone
- 1965 - 2x2 wood/iron pipe

The following ties are shown to corner:

- on the centerline of a north-south road
- nail & disc in gate post, northwest, 63.51 feet
- nail & disc in fence post, northeast, 43.51 feet
- nail & disc in telephone pole, southeast, 38.89 feet
- nail & disc in power pole, southwest, 77.39 feet

No information is given about the witness corner

1992 July, DNR Bureau of Engineering consulted with Steve Schnieder, County Highway Engineer, about monuments at government corners. Steve said that since about 1960 the County Highway Department has tried to maintain a surface monument for government corners that are in County Roads. Steve also said that the surface monuments have been set directly over the monument of record ie. stone. Being surface monuments have been set over the monument of record at government corners, Steve said that no excavating below surface monuments is allowed.

1992 July, DNR Bureau of Engineering found an illegible plastic capped iron monument down 0.1 of a foot at corner. Searched for and found record ties as shown on sketch of reference ties but were unable to get the same distances. The capped iron monument was found to be:

- on the centerline of north-south CSAH No. 5
- in line with fences east and west
- 2659.95 feet from the northeast corner of Section 12
- 2710.55 feet from the northeast corner of Section 13
- 25.13 feet north and 2.14 feet west of the computed lost position for corner

The area of the corner and witness corner are in a fill section of about 6 feet. Did not dig for the record stone at the witness corner.

Analysis of the above information led the DNR Bureau of Engineering to conclude that the found plastic capped iron monument, which is probably over the stone that was set 1.00 chain north of the witness corner, marks the original location of the corner.

