

CERTIFICATE OF LOCATION OF GOVERNMENT CORNER

EAST QUARTER Corner of Section 17, Township 101N, Range 40W, 5th P.M.

STATE OF MINNESOTA, county of NOBLES

At the corner location shown on the sketch :

On 11 JANUARY 2001 found 2" X 2" UNISTRUT WITH MN/DOT CAST IRON CAP,

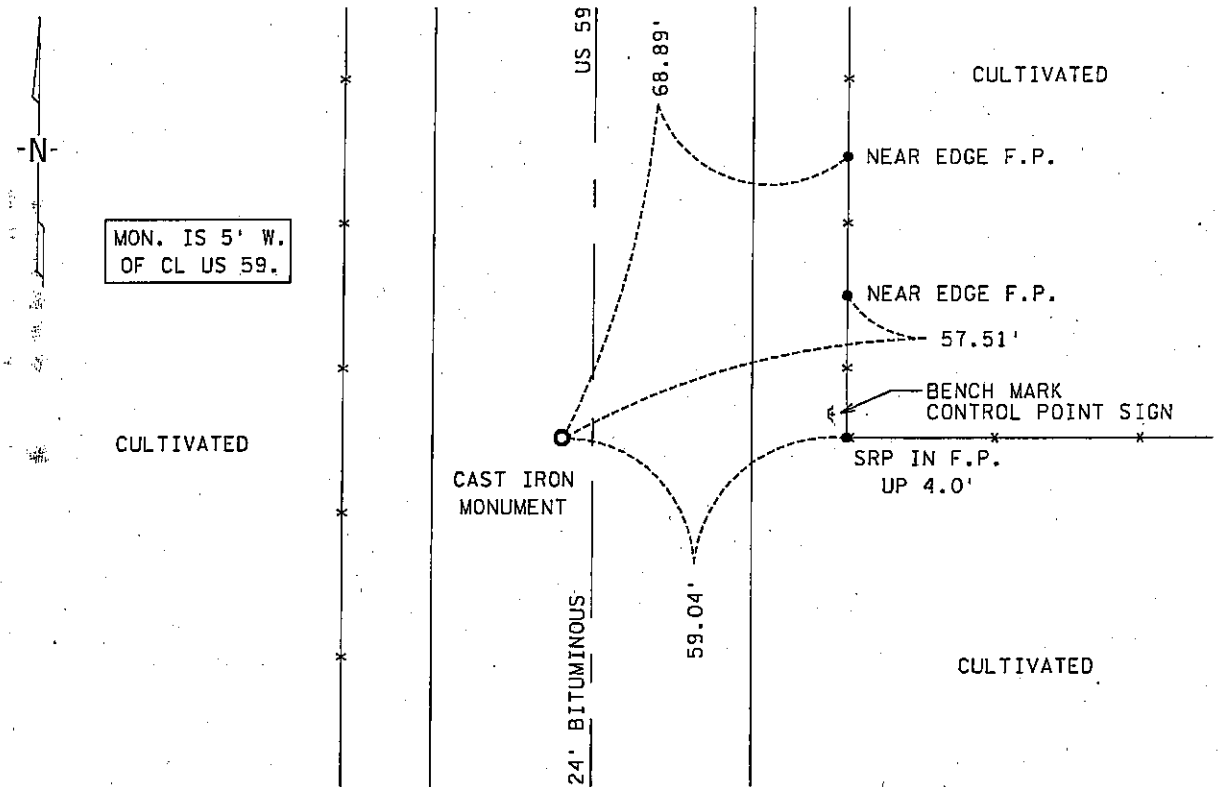
DOWN 0.7'

left monument as found, lowered monument, removed monument (explain)

On _____ set _____

Sketch of reference ties

SEC. 16-101N-40W



SEC. 17-101N-40W

Statement of evidence relative to this corner location is on back page

I hereby certify that this document and the data contained herein was prepared by me or under my direct supervision.

[Signature] 29 Nov. 05
 Signature Date

Registration No. 22683

Land Surveyor, Professional Engineer

County Surveyor, County Engineer

OFFICE OF THE COUNTY RECORDER

County of NOBLES

I hereby certify that this document was filed in the Co. Recorders office at _____ .M. on the _____ day of _____ A.D., 20

County Recorder _____

By _____, Deputy

DOCUMENT NO. _____

Statement of Evidence:

EAST QUARTER CORNER
SECTION 17, TOWNSHIP 101 NORTH, RANGE 40 WEST, 5th P.M.
NOBLES COUNTY, MINNESOTA

- 13 Oct. 1868 - George G. Howe, U.S. Deputy Surveyor, his notes read: "North between Secs 16 & 17, Var. 11° 45' E." @ 40.00 chs. "Set post in mound with pits for 1/4 sec. corner", no ties.
- 25 July 1891 - Nobles County Recorder's Office, Surveyor's Record, Volume A-2, Page 8, by Milton S. Smith, County Surveyors, shows a stone in place at the West Quarter Corner of Section 16-101-40 with a fence running to the west.
- 18 May 1925 - Nobles County Recorder's Office, Surveyor's Record, Volume B, Page 148, by John Spolum, RLS # 421, County Surveyor, for a survey of Section 16-101-40, shows 'No Stone' at the West Quarter Corner.
- 29 June 1938 - Minnesota Highway Department, Right of Way Map for US 59, CS 5309, shows the East Quarter Corner of Sec. 17-101-40 at E-W fencelines and at station PI 296+28.7 with ties: CFP 32.9' E; TP 35.0' SE; TP 35.1' SW.
- July 1940 - Minnesota Highway Department, Construction plans for grading, indicate corner at the intersection of a road and fence line to east. No mention of the monument.
- 1 Dec. 1982 * - Martin Land Surveying of Worthington, Minnesota, Job. No. 85062, signed by Gary D. Martin, RLS # 12967, notes for survey of part of Section 17-101-40, stated that he found nothing and set a spike 15.00 feet west of U.S. Hwy. 59 on fence line to east.
- 31 May 1983 - Minnesota Department of Transportation, Land Tie Field Notes for TH 60, CS 5305, states that in searching for the East Quarter Corner of Sec. 17-101-40, a survey crew using a tractor backhoe excavated an area 10' north-south by 6' east-west by 6' deep at the intersection of road and fence. A 1" X 2" wood stake was found 1.5' below the road surface, a small stone 1 1/2' east of the wood stake was found. No other evidence of a monument was found in this area.
- 3 Aug. 1983 - Minnesota Department of Transportation, Land Tie Field Notes for TH 60, CS 5305, states that in searching for the East Quarter Corner of Sec. 17-101-40, a survey crew using a tractor backhoe excavated at the lost location, at a point 2.8' south and 3.5' east and at a depth of 5.2' of the lost location a 8" X 14" X 16" granite stone was found. A Mn/DOT cast iron monument was set over the stone.
- 11 Jan. 2001 - Minnesota Department of Transportation, survey crew working on TH 60, SP 5305-51, found the previously set Mn/DOT cast iron monument for the East Quarter Corner of Sec. 17-101-40. Returning in the first week of Dec. 2003 to perform a GPS survey where a distance north of 2657.96' and a distance south of 2653.14' were computed to corresponding section corners.

* Gary D. Martin, RLS # 12967, owned and operated Martin Land Surveying, Inc., of Worthington, Minnesota and sold the business in 1987. Mr. Martin is currently practicing in Holly Springs, Georgia.

The written evidence appears to be tied to the 1891 survey by W.A. Sexon and that this evidence is supported by the occupational and collateral evidence which suggest that this is a reasonable location as to the corner. Additional information regarding the preparation of this certificate can be obtained by contacting: Survey Section, Minnesota Department of Transportation, 501 South Victory Drive, Mankato, MN 56001.