

# CERTIFICATE OF LOCATION OF GOVERNMENT CORNER

EAST QUARTER Corner of Section 18, Township 101N, Range 40W, 5th P.M.

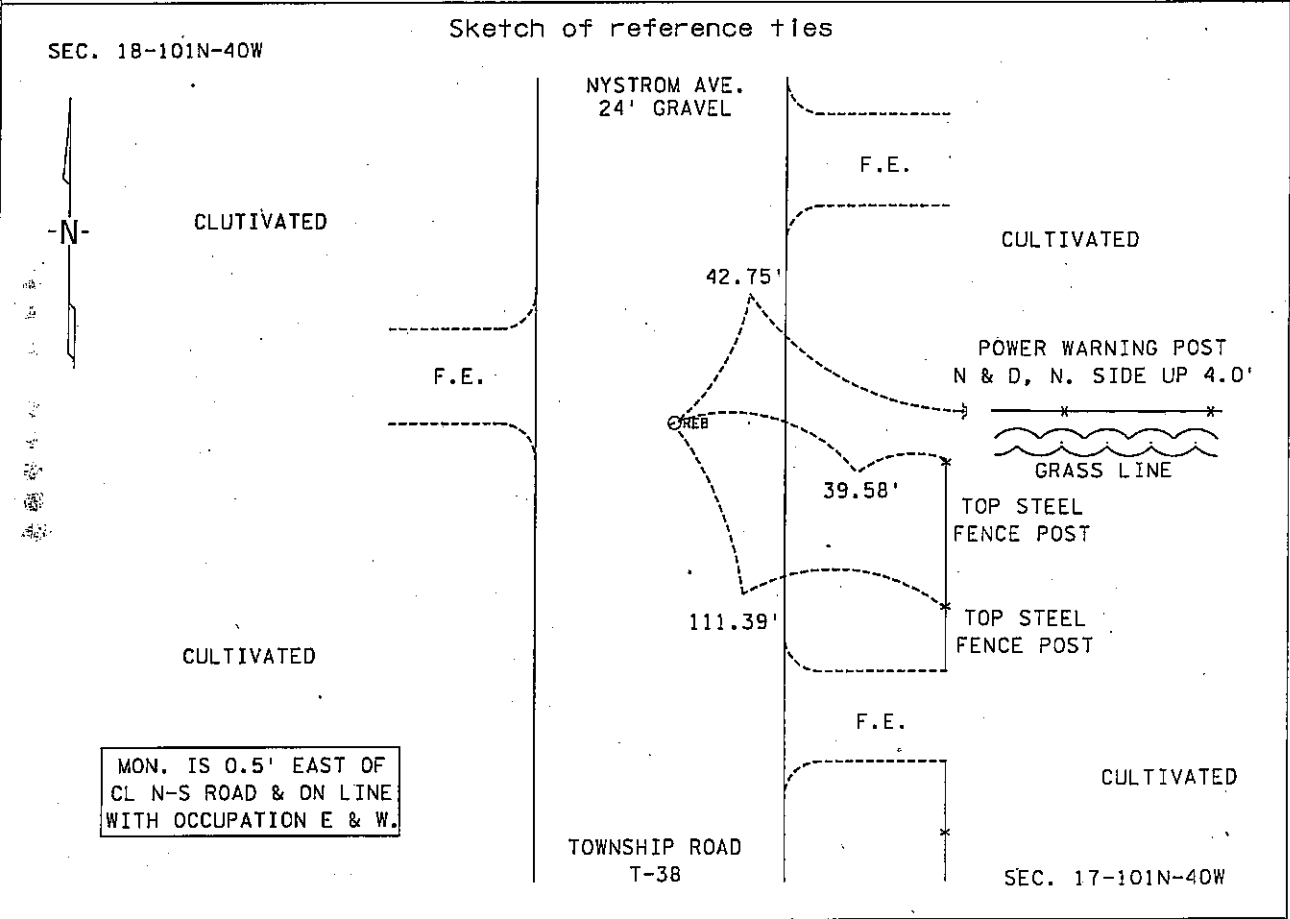
STATE OF MINNESOTA, county of NOBLES

At the corner location shown on the sketch :

On 14 DECEMBER 2000 found REBAR WITH PLASTIC CAP "DAMAGED", DOWN 0.55'

left monument as found,  lowered monument,  removed monument (explain)

On \_\_\_\_\_ set \_\_\_\_\_



Statement of evidence relative to this corner location is on back page

I hereby certify that this document and the data contained herein was prepared by me or under my direct supervision.

*[Signature]* \_\_\_\_\_ Date 29 Nov. 05

Registration No. 22683

Land Surveyor,  Professional Engineer

County Surveyor,  County Engineer

OFFICE OF THE COUNTY RECORDER  
 County of NOBLES

I hereby certify that this document was filed in the Co. Recorders office at \_\_\_\_\_ .M. on the \_\_\_\_\_ day of \_\_\_\_\_ A.D., 20\_\_\_\_

County Recorder \_\_\_\_\_  
 By \_\_\_\_\_, Deputy

DOCUMENT NO. \_\_\_\_\_

Statement of Evidence:

EAST QUARTER CORNER  
SECTION 18, TOWNSHIP 101 NORTH, RANGE 40 WEST, 5th P.M.  
NOBLES COUNTY, MINNESOTA

- 14 Oct. 1868 - George G. Howe, U.S. Deputy Surveyor, his notes read: "North between Sec.s 17 & 18, Var. 11° 00' E." @ 40.00 chs. "Set Post in mound with pits for 1/4 sec. corner", no ties.
- 30 Mar. 1912 - Nobles County Recorder's Office, Surveyor's Record, Volume B, Page 19, by William A. Saxon, County Surveyor, for a survey of Section 17-101-40, where he set an iron shaft at the West Quarter Corner, a witness was also noted as 12" Cottonwood 33.0' W., which was planted by Hugh Mitchell when the old government mound and stake were still intact with a distance south of 2652' to the corresponding section corner.
- 7 Dec. 1982 \* - Martin Land Surveying of Worthington, Minnesota, Job No. 82065, a survey by Gary D. Martin, RLS # 12967, notes for part of Section 17-101-40, states that on 1 Dec. he dug approximate 1 foot and did not find anything. Returned on 7 Dec. and dug with backhoe and found 1 1/4" shaft, down 3.0 feet on east-west fence lines and placed a rebar above shaft. Ties are: N & D in Br. Pole 42.69' E; N & D in FP 35.90' SW; N & D in Br. Pole 35.64' W; N & D in FP 53.85' NW.
- 14 Dec. 2000 - Minnesota Department of Transportation, survey crew working on TH 60, SP 5305-51, found a rebar with plastic cap, damaged and down 0.55' for the East Quarter Corner of Sec. 18-101-40. Returning in the first week of Dec. 2003 to perform a GPS survey where a distance north of 2663.30' and a distance south of 2650.77' were computed to corresponding section corners.

\* Gary D. Martin, RLS # 12967, owned and operated Martin Land Surveying, Inc., of Worthington, Minnesota and sold the business in 1987. Mr. Martin is now practicing in Holly Springs, Georgia.

The written evidence is continuous back to the 1912 survey by W.A. Saxon where the occupational and collateral evidence support this location as a reasonable location as to the corner. The distance measurements also agree between the 1912 and 2003 surveys. Additional information regarding the preparation of this certificate can be obtained by contacting: Survey Section, Minnesota Department of Transportation, 501 South Victory Drive, Mankato, MN 56001.