

# CERTIFICATE OF LOCATION OF GOVERNMENT CORNER

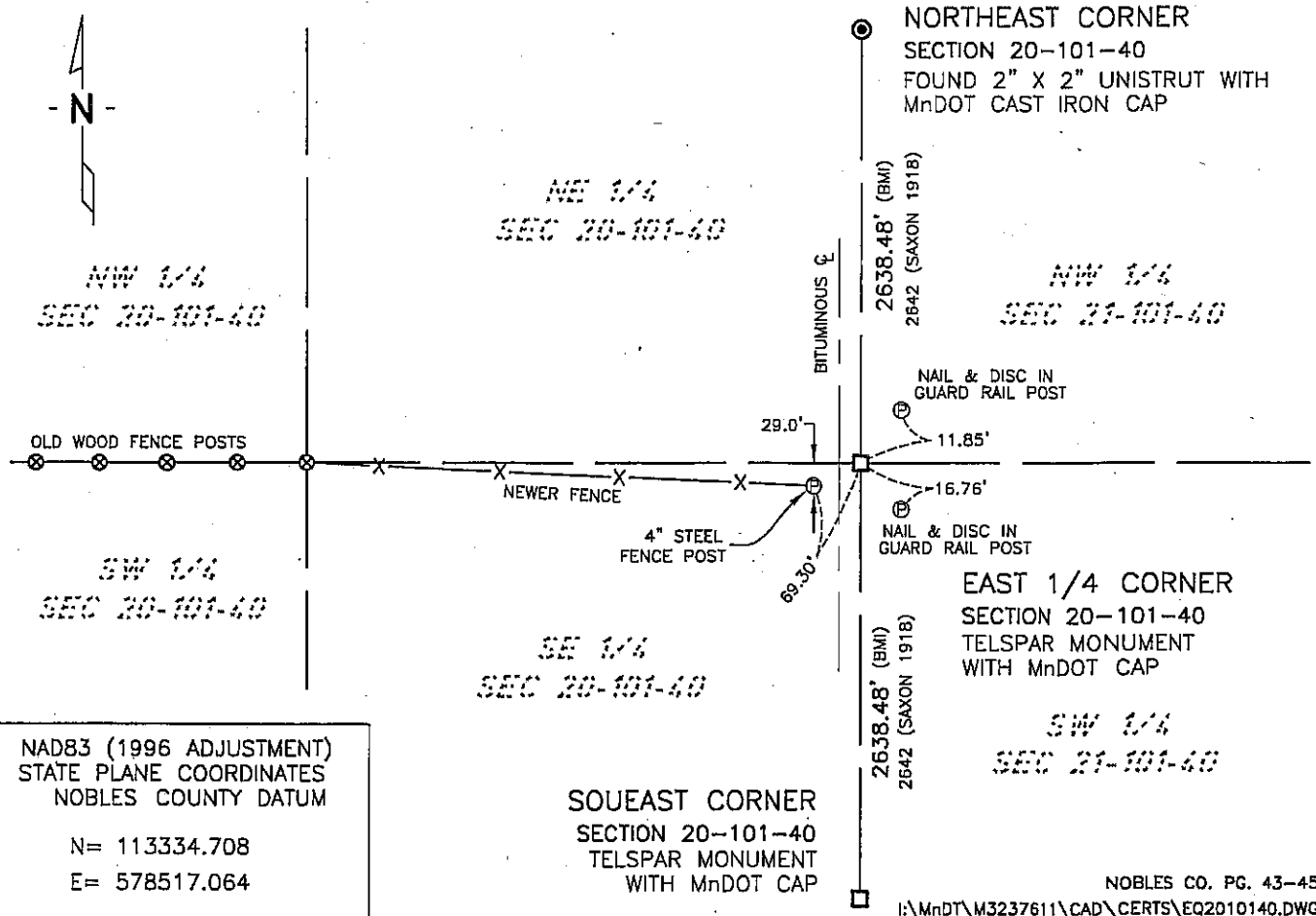
EAST QUARTER Corner of Section 20, Township 101, Range 40, 5th P.M.

STATE OF MINNESOTA, County of NOBLES

At the corner location shown on the sketch:

- On 12/1/05 found a Nothing  
DATE
- left monument as found,  lowered monument,  removed monument (explain)
- On 4/26-06 placed a 2" X 2" X 30" Telspar Monument with MnDot Cap  
DATE

## SKETCH OF REFERENCE TIES



NAD83 (1996 ADJUSTMENT)  
STATE PLANE COORDINATES  
NOBLES COUNTY DATUM

N= 113334.708  
E= 578517.064

**SOU EAST CORNER**  
SECTION 20-101-40  
TELSPAR MONUMENT  
WITH MnDOT CAP

NOBLES CO. PG. 43-45  
I:\MnDT\M3237611\CAD\CERTS\EQ2010140.DWG

Statement of evidence relative to this corner location is on back of page.

I hereby certify that this document and the data contained herein was prepared by me or under my direct supervision.

*Joseph A. Haefner*  
JOSEPH A. HAEFNER

5-15-2006  
DATE

OFFICE OF THE COUNTY RECORDER

County of \_\_\_\_\_

I hereby certify that this document was filed in the Co. Recorders office at \_\_\_\_\_ M. on the \_\_\_\_\_ day of \_\_\_\_\_ A.D., 20\_\_\_\_

County Recorder \_\_\_\_\_

By \_\_\_\_\_, Deputy

DOCUMENT NO. \_\_\_\_\_

Registration No. 43909

Land surveyor,  Professional Engineer

County Surveyor,  County Engineer

Statement of Evidence:

EAST QUARTER CORNER  
SECTION 20, TOWNSHIP 101 NORTH, RANGE 40 WEST  
5th PRINCIPAL MERIDIAN, MINNESOTA

- 13 Oct. 1868 -George G. Howe, U.S. Deputy Surveyor, "North between Sec.s 20 & 21" @ 40.00 chs. "Set post in mound with pits for 1/4 sec. corner", no ties.
- 30 Mar. 1912 -Nobles County Recorder's Office, Surveyor's Record, Volume B, Page 18, by William A. Saxon, County Surveyor, for a survey of Section 20-101-40, where he measured the east-west quarter line, he shows no monumentation, only a fence post at the center of Section 20 and the in place fence line running west.
- 20 June 1918 -Nobles County Recorder's Office, Surveyor's Record, Volume B, Page 109, by William A. Saxon, County Surveyor, for a survey of Section 21-101-40, states that he set a 1 1/2" gas pipe at the West Quarter Corner. The corner is shown to be 2642 feet South of the Northwest Corner and 2642 feet North of the Southwest Corner.
- 1941 -Minnesota Department of Transportation Right-of-Way Map No. 31-78 labels the corner but does not give any indication that a monument was found or established.
- 23 Nov. 2005 -Bolton & Menk, Inc. survey crew's field observations note that the roadway in this area is in a 10 to 12 foot fill area.
- Bolton & Menk, Inc. survey crew found an old wood fence post near the center of Section 20 along with other old wood fence posts running to the west.
- Bolton & Menk, Inc. survey crew found a newer fence running from the above referenced old wood fence post at the center of Section 20 and running east to a 4" steel fence post at the T.H. 59 right-of-way line. Said newer fence is not on the easterly extension of the above referenced old wood fence posts running west from the center of Section 20. Said newer fence bends to the South.
- 3 Dec. 2005 -Bolton & Menk, Inc. calculated the position of the quarter corner, half way and on line between the Northeast and the Southeast Corners, based upon the above referenced 1918 Saxon Survey. This position puts the corner approximately 2.5 feet North of the easterly extension of the above referenced old wood fence posts, 29 feet North of the above referenced 4" steel fence post, and 12.0 feet East of the centerline of Trunk Highway No. 59.
- 26 April 2006 -Bolton & Menk, Inc. survey crew set a 2" X 2" X 30" Telspar Monument with MnDot Cap at the above referenced calculated position.

The evidence is not conclusive as to the true corner location, however the occupational and collateral evidence suggest that this is a reasonable location as to the corner. Additional information regarding the preparation of this certificate can be obtained by contacting: Bolton & Menk, Inc., 219 North Main Street, Fairmont, MN 56031.