

# CERTIFICATE OF LOCATION OF GOVERNMENT CORNER

EAST QUARTER Corner of Section 30, Township 101N, Range 40W, 5th P.M.

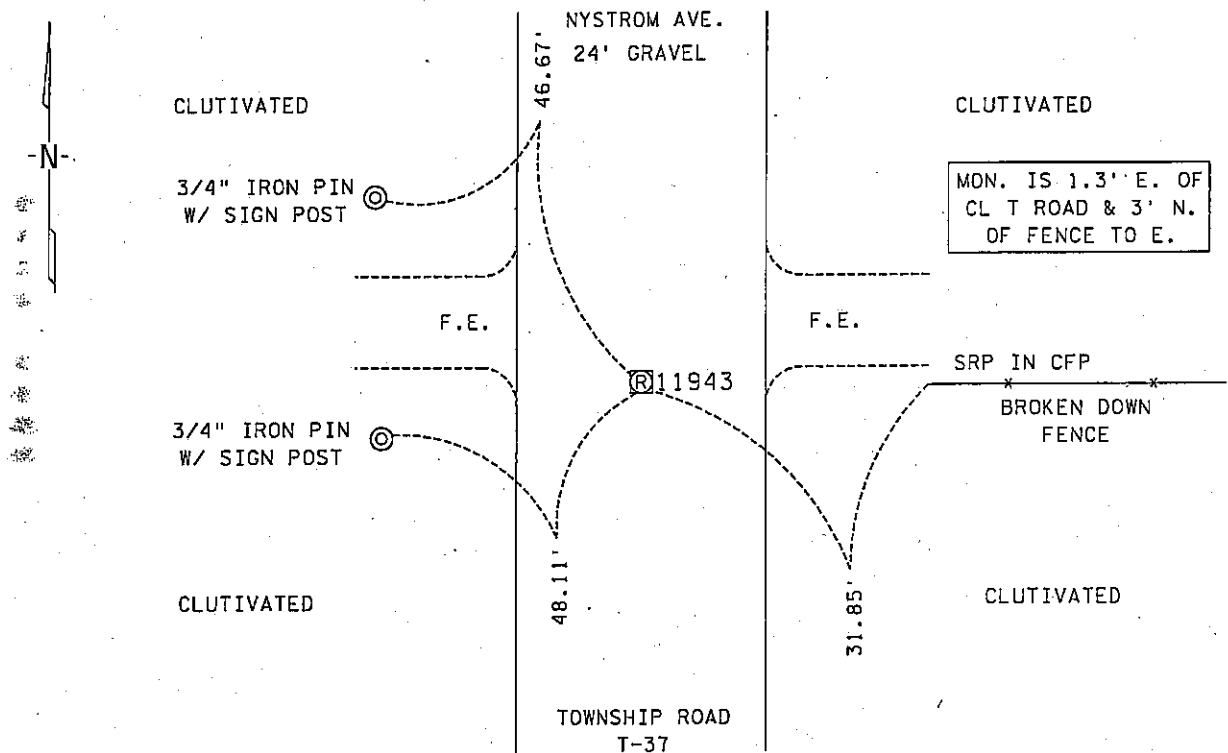
STATE OF MINNESOTA, County of NOBLES

At the corner location shown on the sketch :

- On 20 DECEMBER 2000 found 1/2" REBAR WITH PLASTIC CAP STAMPED RLS #11943  
OVER A 12" X 10" STONE WITH CHISELED "+", DOWN 0.48'  
 left monument as found,  lowered monument,  removed monument (explain)
- On \_\_\_\_\_ set \_\_\_\_\_

Sketch of reference ties

SEC. 29-101N-40W



SEC. 30-101N-40W

Statement of evidence relative to this corner location is on back page

I hereby certify that this document and the data contained herein was prepared by me or under my direct supervision.

*[Signature]* \_\_\_\_\_  
 Signature Date 29 Nov. 05

Registration No. 22683

- Land Surveyor,  Professional Engineer
- County Surveyor,  County Engineer

OFFICE OF THE COUNTY RECORDER

County of NOBLES

I hereby certify that this document was filed in the Co. Recorders office at \_\_\_\_\_ .M. on the \_\_\_\_\_ day of \_\_\_\_\_ A.D.; 20

County Recorder \_\_\_\_\_  
 By \_\_\_\_\_, Deputy

DOCUMENT NO. \_\_\_\_\_

Statement of Evidence:

EAST QUARTER CORNER  
SECTION 30, TOWNSHIP 101 NORTH, RANGE 40 WEST, 5th P.M.  
NOBLES COUNTY, MINNESOTA

- 14 Oct. 1868 - George G. Howe, U.S. Deputy Surveyor, his notes read: "North between Sec.s 29 & 30, Var. 11° 20' E." @ 40.00 chs. "Set post in mound with pits for 1/4 sec. corner", no ties.
- 15 Nov. 1993 - Moseng & Zieske Land Surveying, Inc., of Windom, Minnesota, Survey No. N9302S, by Lyle E. Moseng, RLS # 11943, for a survey of Part of the East Half of Section 30-101-40, shows a flat field stone found at the East Quarter Corner with a distance north of 2646.80' and a distance south of 2648.75' to corresponding section corners.
- 20 Dec. 2000 - Minnesota Department of Transportation, survey crew working on TH 60, SP 5305-51, found a ½" rebar with plastic cap stamped RLS # 11943 over a 12" X 10" stone with chiseled "+" on top, down 0.48' for the East Quarter Corner of Sec. 30-101-40. Returning in the first week of Dec. 2003 to perform a GPS survey where a distance north of 2646.41' and a distance south of 2651.30' were computed to corresponding section corners.

The written evidence is short and there is no conclusive evidence as to how the stone got to where it is, also the distance to the north is somewhat reasonable but the distance south is a reason for concern as to the validity of the Southeast Corner. The occupational and collateral evidence suggests that this is a reasonable location as to the corner. I accept the stone as the corner location. Additional information regarding the preparation of this certificate can be obtained by contacting: Survey Section, Minnesota Department of Transportation, 501 South Victory Drive, Mankato, MN 56001.