

CERTIFICATE OF LOCATION OF GOVERNMENT CORNER

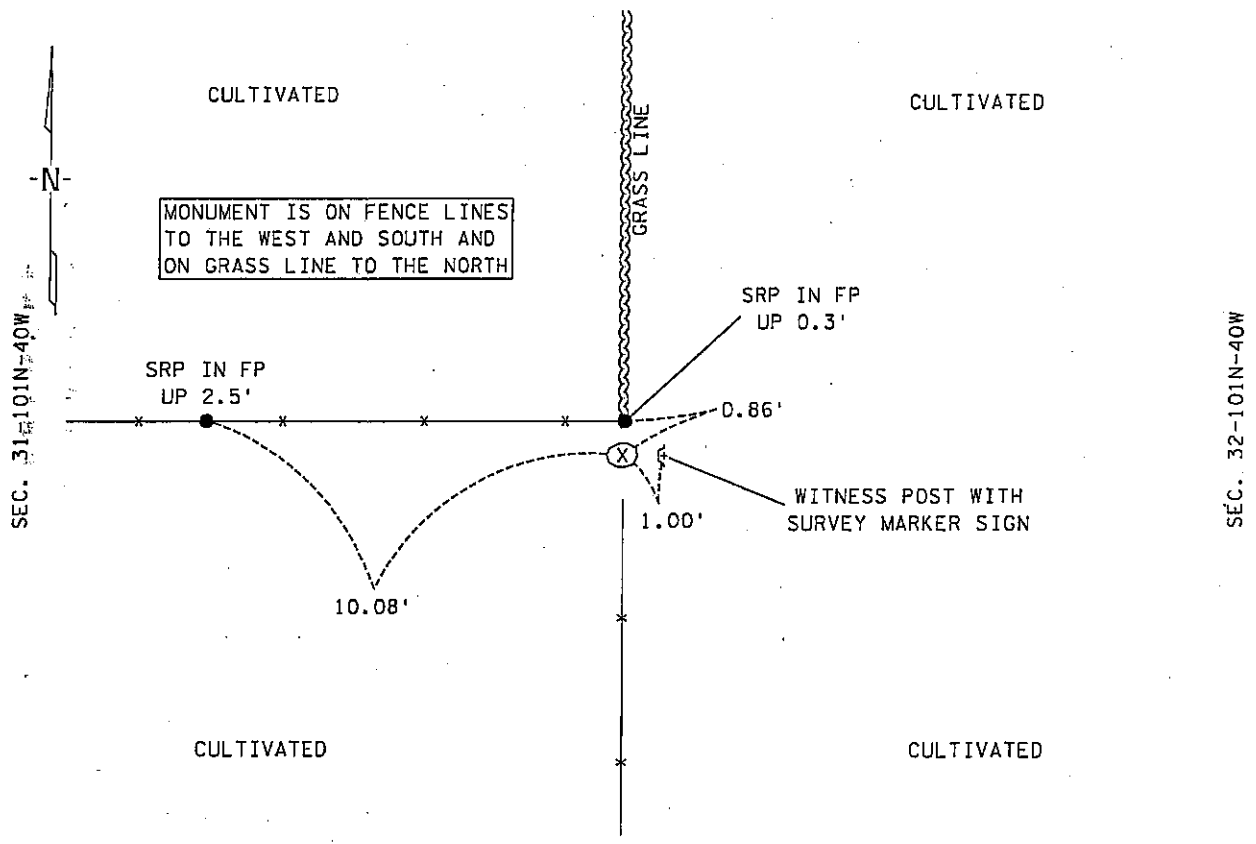
EAST QUARTER Corner of Section 31, Township 101N, Range 40W, 5th P.M.

STATE OF MINNESOTA, County of NOBLES

At the corner location shown on the sketch :

- On 22 JAN. 2001 found 8"X6" ROCK WITH MARKED "X" DOWN 2'
- left monument as found, lowered monument, removed monument (explain)
- On _____ set _____

Sketch of reference files



Statement of evidence relative to this corner location is on back page

I hereby certify that this document and the data contained herein was prepared by me or under my direct supervision.

[Signature] 29 Nov. 05
 Signature Date

Registration No. 22683
 Land surveyor, Professional Engineer
 County Surveyor, County Engineer

OFFICE OF THE COUNTY RECORDER

County of NOBLES

I hereby certify that this document was filed in the Co. Recorders office at _____ .M. on the day of _____ A.D., 19

County Recorder _____
 By _____, Deputy

DOCUMENT NO. _____

Statement of Evidence:

EAST QUARTER CORNER
SECTION 31, TOWNSHIP 101 NORTH, RANGE 40 WEST, 5th P.M.
NOBLES COUNTY, MINNESOTA

- 14 Oct. 1868 - George G. Howe, U.S. Deputy Surveyor, his notes read: "North between Sec.s 31 & 32, Var. 11° 30' E." @ 40.00 chs. "Set post in mound with pits for 1/4 sec. corner", no ties.
- 25 June 1917 - Nobles County Recorder's Office, Surveyor's Record, Volume B, Page 94, by William A. Saxon, County Surveyor, for a survey of Section 31-101-40, states that he set a stone at the East Quarter Corner with a distance north of 2652' and a distance south of 2647' to corresponding section corners.
- 22 Jan. 2001 - Minnesota Department of Transportation, survey crew working on TH 60, SP 5305-51, found a 8" X 6" rock with a "+" on top, down 2' for the East Quarter Corner of Sec. 31-101-40. Returning in the first week of Dec. 2003 to perform a GPS survey where a distance north of 2649.53' and a distance south of 2646.97' were computed to corresponding section corners.

The written evidence is sparse and the distance measurements confirm the location as to the true corner where the occupational and collateral evidence support the stone as the most reasonable location as to the corner. Additional information regarding the preparation of this certificate can be obtained by contacting: Survey Section, Minnesota Department of Transportation, 501 South Victory Drive, Mankato, MN 56001.