

CERTIFICATE OF LOCATION OF GOVERNMENT CORNER

EAST QUARTER Corner of Section 7, Township 101N, Range 40W, 5th P.M.

STATE OF MINNESOTA, County of NOBLES

At the corner location shown on the sketch :

On 21 JULY 2000 found REBAR WITH PLASTIC CAP STAMPED RLS # 12967,

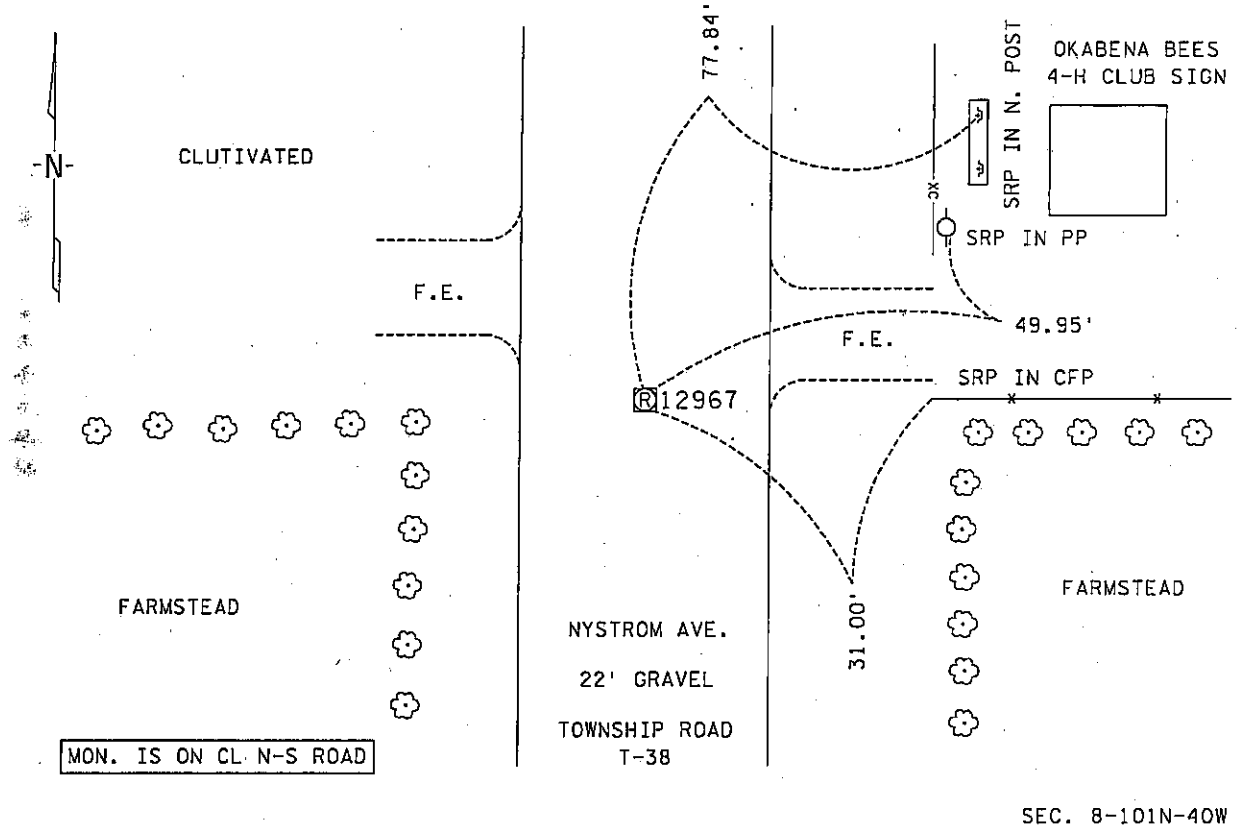
DOWN 0.3'

left monument as found, lowered monument, removed monument (explain)

On _____ set _____

Sketch of reference ties

SEC. 7-101N-40W



Statement of evidence relative to this corner location is on back page

I hereby certify that this document and the data contained herein was prepared by me or under my direct supervision.

[Signature] 29 Nov. 05
 Signature Date

Registration No. 22683

- Land Surveyor, Professional Engineer
 County Surveyor, County Engineer

OFFICE OF THE COUNTY RECORDER

County of NOBLES

I hereby certify that this document was filed in the Co. Recorders office at _____ M. on the day of _____ A.D., 20

County Recorder _____

By _____, Deputy

DOCUMENT NO. _____

Statement of Evidence:

EAST QUARTER CORNER
SECTION 7, TOWNSHIP 101 NORTH, RANGE 40 WEST, 5th P.M.
NOBLES COUNTY, MINNESOTA

- 15 Oct. 1868 - George G. Howe, U.S. Deputy Surveyor, his notes read: "North Between Secs 7 & 8, Var. 11° 20' E." @ 40.00 chs. "Set post in mound with pits for 1/4 sec. corner." No ties.
- 23 June 1982 * - Martin Land Surveying, Inc., of Worthington, Minnesota, Job No. 82020, a survey by Gary D. Martin, RLS # 12967, notes for part of Section 7-101-40, states that he set a rebar and cap over top of stone for the East Quarter Corner. Ties include: N&D in PP 50.02' NE; N&D in top CFP 33.31' W; N&D in top FP 49.88' NW.
- 23 Jan. 1989 ** - Bell Surveying, Inc., of Worthington, Minnesota, Job No. 87001, a survey signed by Timothy P. Bell, RLS # 16093, for a part of Section 8-101-40, shows a found monument at the West Quarter Corner.
- 21 July 2000 - Minnesota Department of Transportation survey crew working on TH 60, SP 8827-10 & 5305-51 found a rebar with plastic cap stamped RLS # 12967, down 0.3' for the East Quarter Corner of Sec. 7-101-40 on the centerline of Township Road T-38, ties set include: SRP in CFP 31.00' E; SRP in PP 49.95' NE; Okabena 4H Club Sign 77.84' NE. Returning in the first week of Dec. 2003 to perform a GPS survey where a distance north of 2656.15' is computed to the Northeast Corner.

* Gary D. Martin, RLS # 12967, owned and operated Martin Land Surveying, Inc., of Worthington, Minnesota and sold the business in 1987. Mr. Martin is now practicing in Holly Springs, Georgia.

** Timothy P. Bell, RLS # 16093, owned and operated Bell Surveying, Inc. of Worthington, Minnesota and went out of business some time around 1990. Mr. Bell's Registration Number is listed in the Minnesota Society of Professional Surveyors Roster in the Deceased or Not Practicing category.

The written evidence shows a large gap of unrecorded and unavailable information about this corner from 1868 to 1982 and the documented appearance of the undocumented stone is concerning, however the occupational and collateral evidence suggest that this is a reasonable location as to the corner. Additional information regarding the preparation of this certificate can be obtained by contacting: Survey Section, Minnesota Department of Transportation, 501 South Victory Drive, Mankato, MN 56001.