

CERTIFICATE OF LOCATION OF GOVERNMENT CORNER

EAST QUARTER Corner of Section 8, Township 101N, Range 40W, 5th P.M.

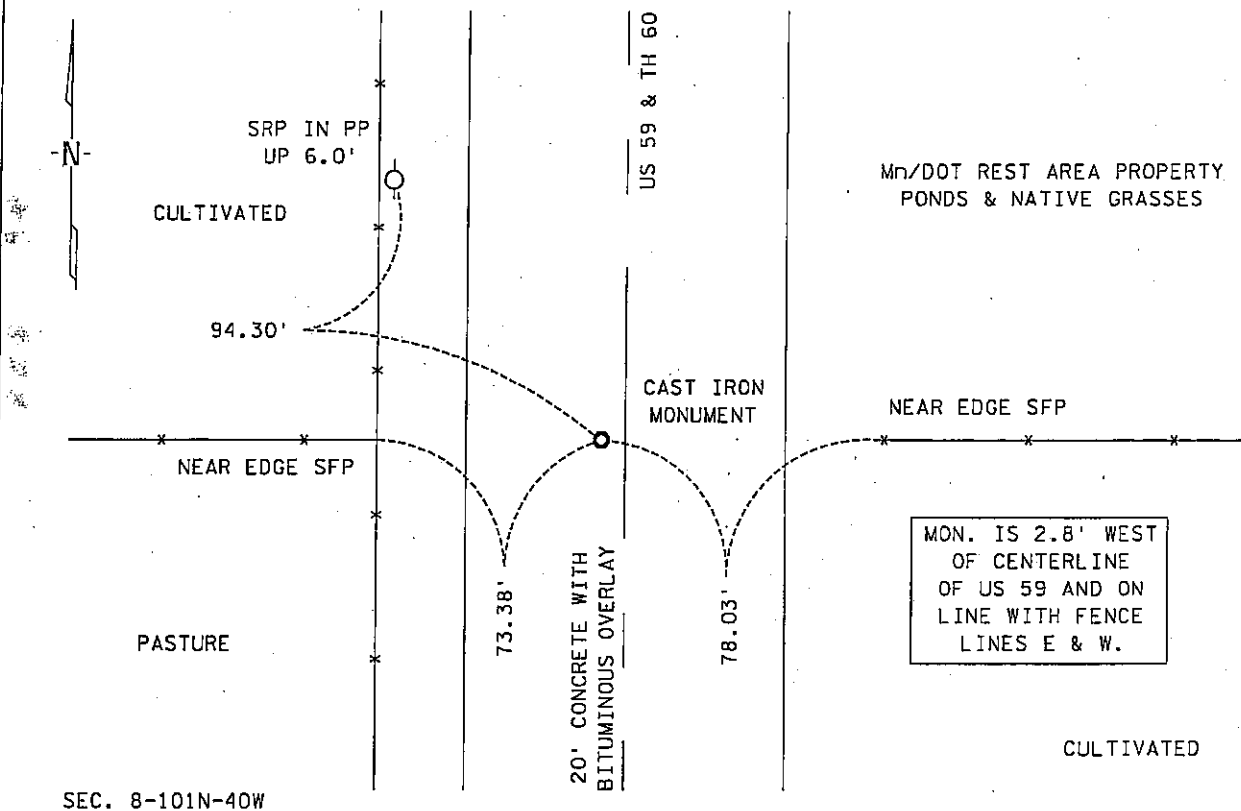
STATE OF MINNESOTA, County of NOBLES

At the corner location shown on the sketch :

- On 21 JULY 2000 found A 2" X 2" UNISTRUT WITH Mn/DOT CAST IRON CAP,
DOWN 0.6'
 left monument as found, lowered monument, removed monument (explain)
- On _____ set _____

Sketch of reference ties

SEC. 9-101N-40W



SEC. 8-101N-40W

Statement of evidence relative to this corner location is on back page

I hereby certify that this document and the data contained herein was prepared by me or under my direct supervision.

[Signature]
Signature Date 29 Nov 05

Registration No. 22683

- Land Surveyor, Professional Engineer
- County Surveyor, County Engineer

OFFICE OF THE COUNTY RECORDER

County of NOBLES

I hereby certify that this document was filed in the Co. Recorders office at _____ .M. on the day of _____ A.D., 20

County Recorder _____

By _____, Deputy

DOCUMENT NO. _____

Statement of Evidence:

EAST QUARTER CORNER
SECTION 8, TOWNSHIP 101 NORTH, RANGE 40 WEST, 5th P.M.
NOBLES COUNTY, MINNESOTA

- 15 Oct. 1868 - George G. Howe, U.S. Deputy Surveyor, his notes read: "North between Secs 8 & 9, Var. $11^{\circ} 45'$ E." @ 40.00 chs. "Set post in mound with pits for 1/4 sec. corner", no ties.
- 20 Sept. 1930 - Nobles County Recorder's Office, Surveyor's Record, Volume B, Page 168, by J.W. Woolsteincraft, C.E., for a survey of Section 9-101-40, states that he located the West Quarter Corner by a fence line east-west and on line from the Northwest to the Southwest Corners with a distance south of 2670.9' to the corresponding section corner.
- Circa 1932 - Minnesota Highway Department, Right of Way Map for TH 60, CS 5305, shows the East Quarter Corner of Sec. 8-101-40 as being 1.4' west of station POT 268+06.8 which is at the intersection of N-S road and fence lines E-W.
- 13 July 1983 - Minnesota Department of Transportation, Land Tie Field Notes, TH 60, CS 5305, a survey crew using a tractor backhoe, dug and found an 8" cast iron drive gear with 3.6' X 1" steel shaft, 4.4' below the concrete surface for the East Quarter Corner of Sec. 8-101-40. Tied, removed and excavated an additional 2' and found no other evidence of a monument. A Mn/DOT cast iron monument was set at this location 0.8' below ground.
- 21 July 2000 - Minnesota Department of Transportation survey crew working on TH 60, SP 8827-10 & 5305-51 found the previously set Mn/DOT cast iron monument from 1983 for the East Quarter Corner of Sec. 8-101-40, down 0.6'. Returning in the first week of Dec. 2003 to perform a GPS survey for this project where a distance north of 2634.91' and a distance south of 2658.08' were computed to corresponding section corners. Resolution of the Northeast Corner of Sec. 17-101-40, the corner to the south, is uncertain at this time and therefore the distance of 2670.9' and 2658.08' should be disregarded.

The written evidence is weak as to the true corner location and there is nothing that ties the steel shaft from 1930 to any previous survey, however the occupational and collateral evidence suggest that this is a reasonable location as to the corner. Additional information regarding the preparation of this certificate can be obtained by contacting: Survey Section, Minnesota Department of Transportation, 501 South Victory Drive, Mankato, MN 56001.