

CERTIFICATE OF LOCATION OF GOVERNMENT CORNER

EAST QUARTER Corner of Section 9, Township 101N, Range 40W, 5th P.M.

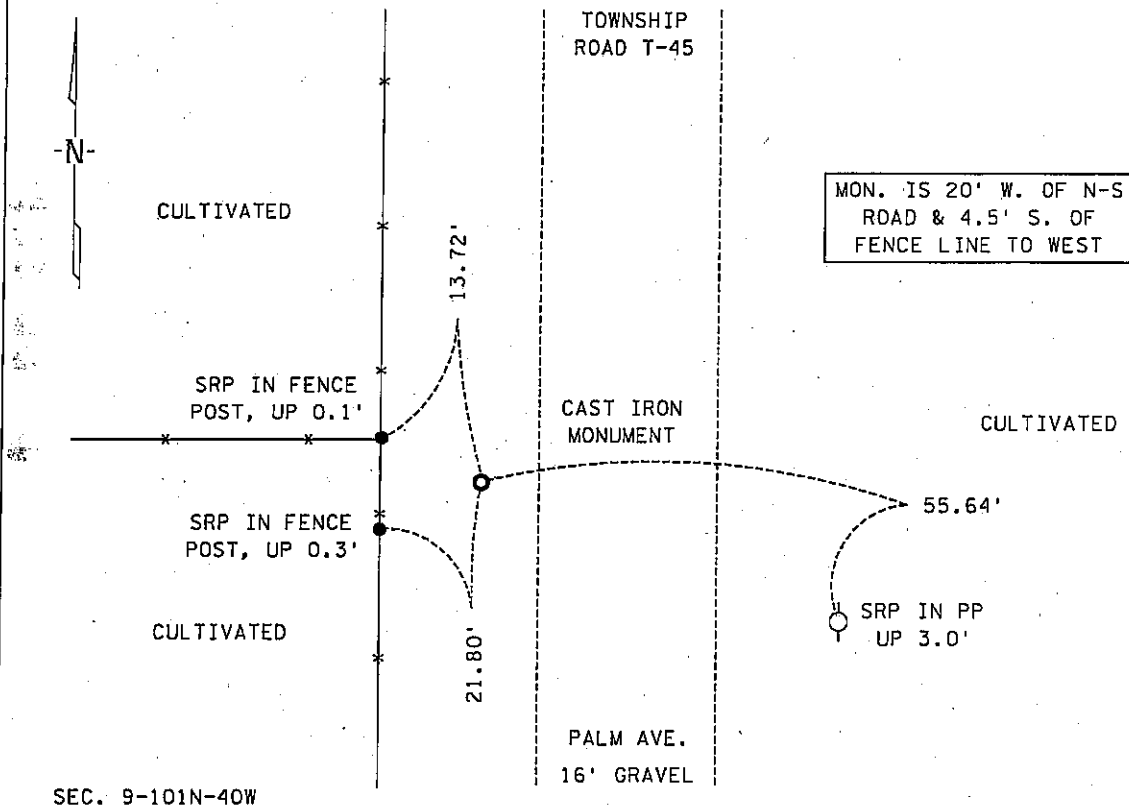
STATE OF MINNESOTA, County of NOBLES

At the corner location shown on the sketch :

- On 4 JUNE 1999 found A 2" X 2" UNISTRUT WITH Mn/DOT CAST IRON CAP,
FLUSH
 left monument as found, lowered monument, removed monument (explain)
- On _____ set _____

Sketch of reference ties

SEC. 10-101N-40W



Statement of evidence relative to this corner location is on back page

I hereby certify that this document and the data contained herein was prepared by me or under my direct supervision.

[Signature] _____
 Signature Date

Registration No. 22683

- Land Surveyor, Professional Engineer
 County Surveyor, County Engineer

OFFICE OF THE COUNTY RECORDER

County of NOBLES

I hereby certify that this document was filed in the Co. Recorders office at _____ .M. on the day of _____ A.D., 20

County Recorder _____
 By _____, Deputy

DOCUMENT NO. _____

Statement of Evidence:

EAST QUARTER CORNER
SECTION 9, TOWNSHIP 101 NORTH, RANGE 40 WEST, 5th P.M.
NOBLES COUNTY, MINNESOTA

- 15 Oct. 1868 - George G. Howe, U.S. Deputy Surveyor, his notes read: "North between Secs 8 & 9, Var. 11° 45' E." @ 40.00 chs. "Set post in mound with pits for 1/4 sec. corner", no ties.
- 20 Jan. 1879 - Bigelow Township, Road Book, reveals a petition for the building of a new road going over this corner.
- 1 Nov. 1893 - Nobles County Recorder's Office, Surveyor's Record, Volume A-2, Page 136, by Milton S. Smith, County Surveyor, for a survey of Section 10-101-40, indicates that he found a piece of the original stake and that he set a stone at the West Quarter Corner with a distance north of 2640' to the corresponding section corner.
- 22 Apr. 1895 - Bigelow Township, Road Book, reveals a petition for altering the alignment around the lake 95 rods south of this corner.
- 12 Nov. 1986 - Minnesota Department of Transportation, survey crew using a tractor backhoe excavated an area 8' X 8' X 4' deep at the occupation lines for the East Quarter Corner of Sec. 9-101-40 and found nothing. They returned on 17th Nov. and excavated an area 12' east-west by 8' north-south by 4' deep, this was adjacent to the south side of the 12th Nov. location and nothing was found.
- 26 Aug. 1988 - Minnesota Department of Transportation, Certificate of Location of Gov't Corner, East Quarter Corner of Sec. 9-101-40, unsigned, shows nothing found and set a Mn/DOT cast iron monument flush with the ground and at the lost location with the following ties: SRP in PP 55.64' SE, SRP in FP 21.80' SW; SRP in FP 13.72' NW.
- 4 June 1999 - Minnesota Department of Transportation, survey crew working on TH 60, SP 5305-51, found the previously set Mn/DOT cast iron monument, flush for the East Quarter Corner of Sec. 9-101-40. Returning in the first week of Dec. 2003 to perform a GPS survey for the project established a coordinate position for this corner with a computed distance west of 2632.86' to the corresponding section corner.

The written evidence is not conclusive as to the true corner location and the lost location generally agrees with the occupational evidence, so I accept this as the corner position. Additional information regarding the preparation of this certificate can be obtained by contacting: Survey Section, Minnesota Department of Transportation, 501 South Victory Drive, Mankato, MN 56001.