

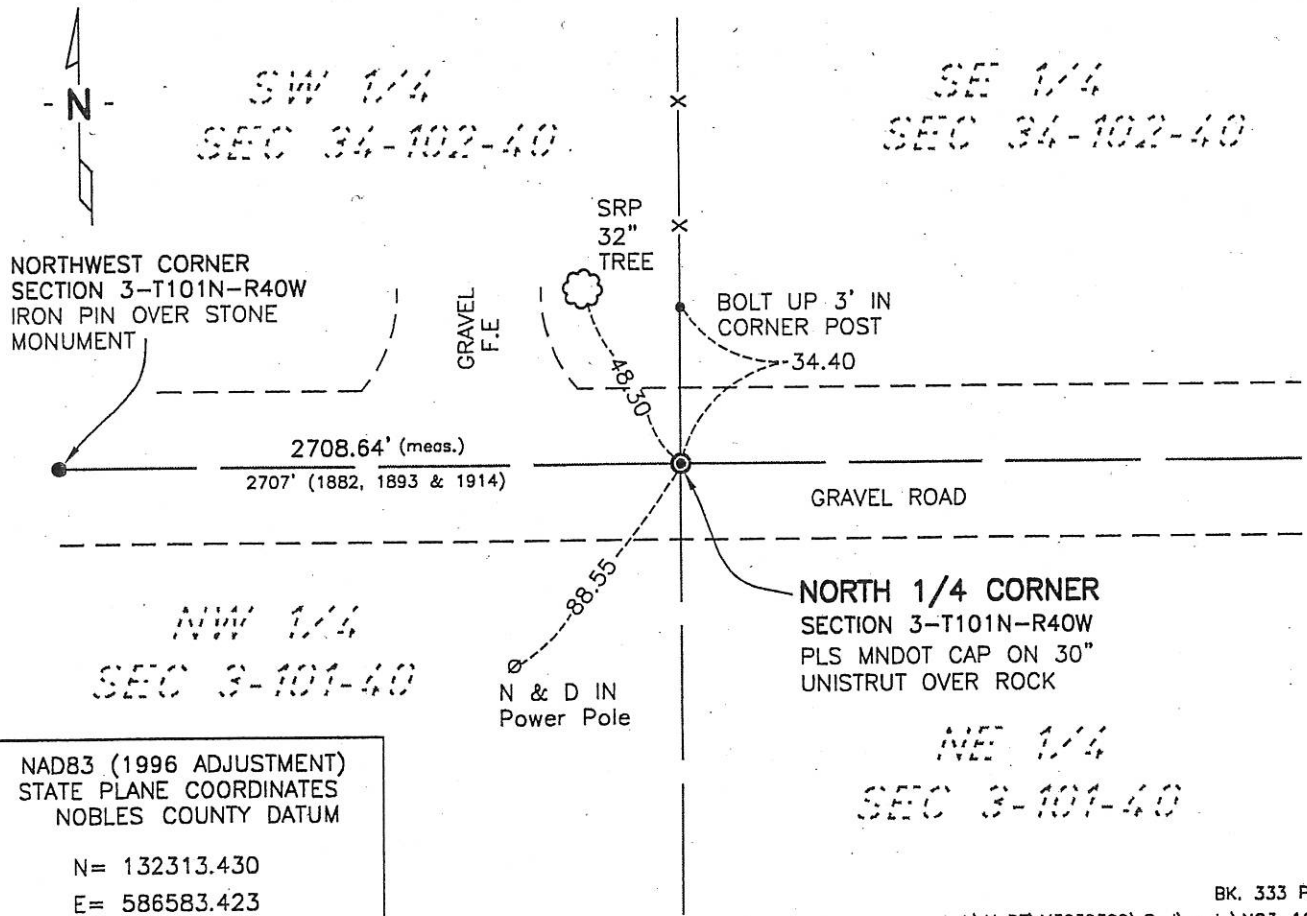
CERTIFICATE OF LOCATION OF GOVERNMENT CORNER

NORTH 1/4 Corner of Section 3, Township 101, Range 40, 5th P.M.
STATE OF MINNESOTA, County of NOBLES

At the corner location shown on the sketch:

- On 6/21/07 found a PLS MnDOT CAP ON A 30" UNISTRUT 9" BELOW
DATE GRAVEL SURFACE & 1.5' NORTH OF CENTERLINE
- left monument as found, lowered monument, removed monument (explain)
- On _____ placed a _____
DATE

SKETCH OF REFERENCE TIES



NAD83 (1996 ADJUSTMENT)
STATE PLANE COORDINATES
NOBLES COUNTY DATUM

N = 132313.430
E = 586583.423

BK. 333 PG. 28
I:\MnDT\M3239399\Cad\certs\NQ3-101-40

Statement of evidence relative to this corner location is on back of page.

I hereby certify that this document and the data contained herein was prepared by me or under my direct supervision.

Joseph A. Haefner
JOSEPH A. HAEFNER
DATE 6-25-2007

Registration No. 43909

- Land surveyor, Professional Engineer
- County Surveyor, County Engineer

OFFICE OF THE COUNTY RECORDER

County of _____

I hereby certify that this document was filed in the Co. Recorders office at ____M. on the _____ day of _____ A.D., 20__

County Recorder _____

By _____, Deputy

DOCUMENT NO. _____

North Quarter Corner Section 3, Township 101 North, Range 40 West

-Thomas B. Walker, U.S. Deputy Surveyor, his notes read: "East Random Line Between Towns 101 & 102, Range 40." I set temporary corners along line & at intersect town line 15.50 chs north of corner. "Upon examination; I find my instrument grossly out of repair & adjustment" "Declination Bar badly bent by shutting the box cover on it, telescope axis askew as also telescope sights. " "As my line cannot be straight, I now sure west Random line & at a point 130 lks. North of Town Corner. " "My correction will be 21.23 lks. South per mile, the excess remaining at the west end. " "N 89° 10' E between Sections 3 & 34, Var. 11° 30', " @ 40.00 chs "1/4 Section Corner Post in Mound", no ties.

1867

-Nobles County Recorder's Office, Surveyor's Record, Volume A-2, Page 50-51 by Milton S. Smith, County Surveyor, for a survey of the north line of Sections 3 and 4, states "found original stake also charcoal in mound, set stone" "this 1/4 post used by all in setting out fences, trees and by surveyors in running out lines" "distances of west 2707' and east 2604 1/2' are shown to the corresponding section corners.

22 Apr. 1892

-Nobles County Recorder's Office, Surveyor's Record, Volume A-2, Page 132-133, by Milton S. Smith, County Surveyor, for a survey of Sections 3, states "1/4 Post on North Stone in Mound Charcoal in Mound Original Stake" a distance of east 2604 1/2' is shown to the corresponding section corner.

24 Oct 1893

-Nobles County Recorder's Office, Surveyor's Record, Volume B, Page 57, by William A. Saxon, County Surveyor, for a survey of Section 34-102-40, shows an "Old Stone" at the South 1/4 Corner.

20 July 1914

-Nobles County Recorder's Office, Surveyor's Record, Volume B, Page 132, for a survey of Section 34-102-40 shows a "Stone" at the South 1/4 Corner. Distances of west 2707' and east 2604.5' are shown to the corresponding section corners.

15 Mar. 1922

-Minnesota Department of Transportation, survey crew found a 12" diameter rock 4.5 feet below gravel surface and set a PLS Mindot Cap on a 30" Unistrut on top of rock 9" below gravel surface.

22 July 2006

-Bolton & Menk, Inc., survey crew found the above referenced PLS Mindot Cap. A distance of west 2708.64' was measured to the corresponding section corner which is in reasonable agreement with the above referenced 1892, 1893 & 1914 distance.

20 June 2007

The evidence is conclusive as to the true corner location, the measurement data from 1892, 1893, 1914 & 2007 are close considering the time span and the occupational and collateral evidence also supports this, I accept this as the true corner location. Additional information regarding the preparation of this certificate can be obtained by contacting: Bolton & Menk, Inc., 219 North Main Street, Fairmont, MN 56013.