

# CERTIFICATE OF LOCATION OF GOVERNMENT CORNER

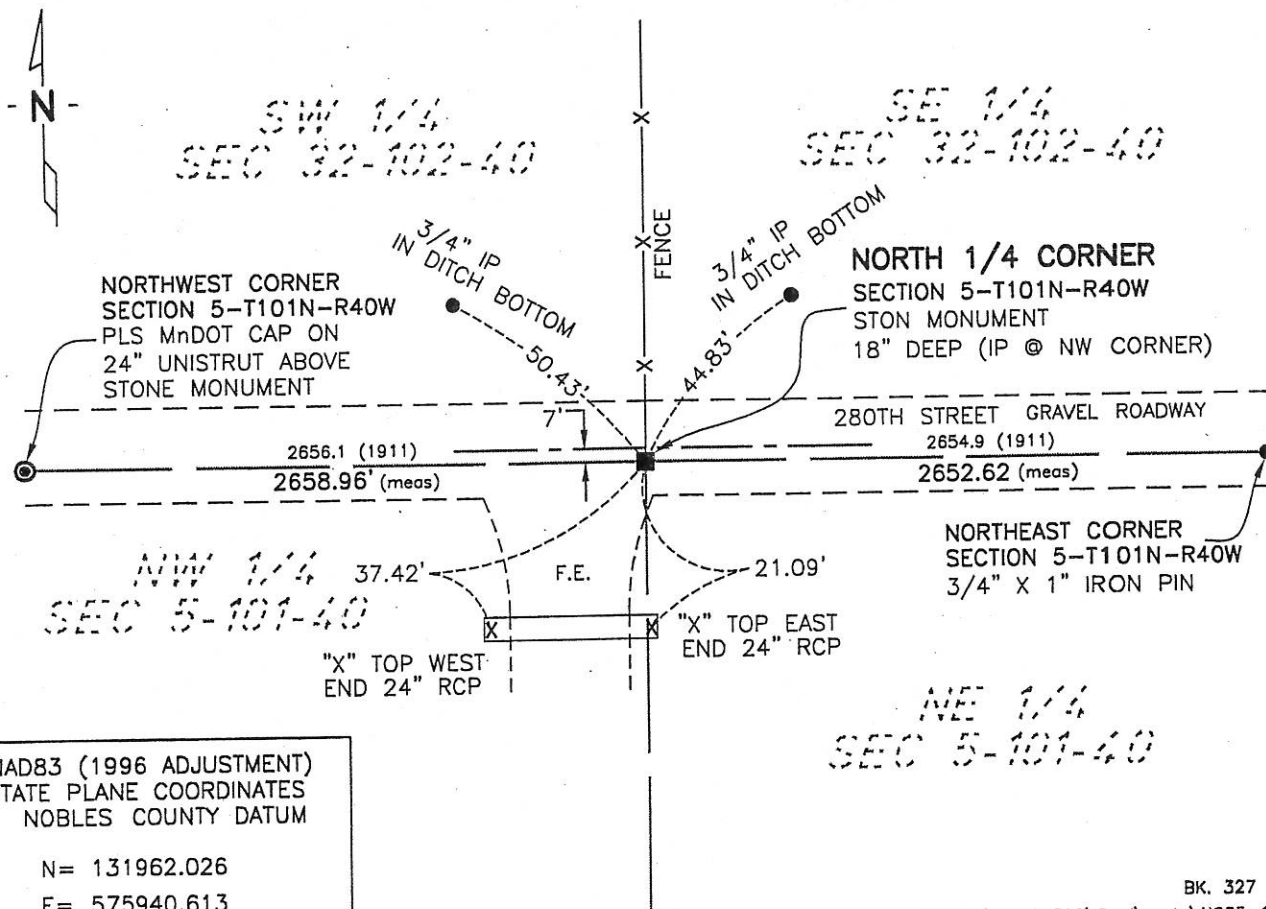
NORTH 1/4 Corner of Section 5, Township 101, Range 40, 5th P.M.

STATE OF MINNESOTA, County of NOBLES

At the corner location shown on the sketch:

- On 5-9-07 found a GRAY GRANITE 8" X 8" STONE MARKER (18" DEEP)  
DATE
- left monument as found,  lowered monument,  removed monument (explain)
- On 5-9-07 placed an IRON PIPE @ NW CORNER OF STONE  
DATE

## SKETCH OF REFERENCE TIES



NAD83 (1996 ADJUSTMENT)  
STATE PLANE COORDINATES  
NOBLES COUNTY DATUM

N= 131962.026  
E= 575940.613

BK. 327 PG. 72  
I:\MnDT\M3239399\Cad\certs\NQ05-101-40

Statement of evidence relative to this corner location is on back of page.

I hereby certify that this document and the data contained herein was prepared by me or under my direct supervision.

*Joseph A. Haeflner*  
JOSEPH A. HAEFLNER  
6-26-2007  
DATE

Registration No. 43909

Land surveyor,  Professional Engineer  
 County Surveyor,  County Engineer

OFFICE OF THE COUNTY RECORDER  
County of \_\_\_\_\_

I hereby certify that this document was filed in the Co. Recorders office at \_\_\_\_M. on the \_\_\_\_\_ day of \_\_\_\_\_ A.D., 20\_\_\_\_

County Recorder \_\_\_\_\_  
By \_\_\_\_\_, Deputy

DOCUMENT NO. \_\_\_\_\_

Statement of Evidence

North Quarter Corner Section 5, Township 101 North, Range 40 West

1867 -Thomas B. Walker, U.S. Deputy Surveyor, his notes read: "East Random Line Between Towns 101 & 102, Range 40." "I set temporary corners along line & at intersect town line 15.50 chs north of corner." "Upon examination; I find my instrument grossly out of repair & adjustment." "Declination Bar badly bent by shutting the box cover on it, telescope axis askew as also telescope sights." "As my line cannot be straight, I now sure west Random line & at a point 130 lks. North of Town Corner." "My correction will be 21.23 lks. South per mile, the excess remaining at the west end." "S 89° 54' E between Sections 5 & 32, Var. 11° E," @ 40.05 chs "1/4 Section Corner Post in Mound", no ties

27 Apr. 1911 -Nobles County Recorder's Office, Surveyor's Record, Volume B, Page 12, by William A. Saxon, County Surveyor, for a survey of Section 32-102-40, states "There was a stone near the 1/4 corner on the south line which had been placed there by private parties, but it was not in line and nor at the right place E & W" "set the stone monument at the 1/4 Corner on the south line" distances of west 2658.1' and east 2654.9' are shown to the corresponding section corners.

1963 Nobles County Highway Department records show a stake was found at this corner.

1978 Nobles County Highway Department records show a stake was found at this corner and an iron pin was placed. Ties are shown as follows:  
Nail & Disk Fence Post - 91.12' S  
Nail & Disk Fence Post - 72.87' N

9 May 2007 -Bolton & Menk, Inc., survey crew found a 8" X 8" gray granite stone 7' south of gravel centerline and 1.5' feet below gravel surface. Distances of west 2658.96' and east 2652.62 feet was measured to the corresponding corners.

No evidence of the above referenced stake or iron pin was found. However, the evidence appears to be conclusive back to the 1911 survey by Saxon, the measurement data from 1911 and 2007 are close considering the time span; therefore I accept this as the true corner location. Additional information regarding the preparation of this certificate can be obtained by contacting: Bolton & Menk, Inc., 219 North Main Street, Fairmont, MN 56013.