

CERTIFICATE OF LOCATION OF GOVERNMENT CORNER

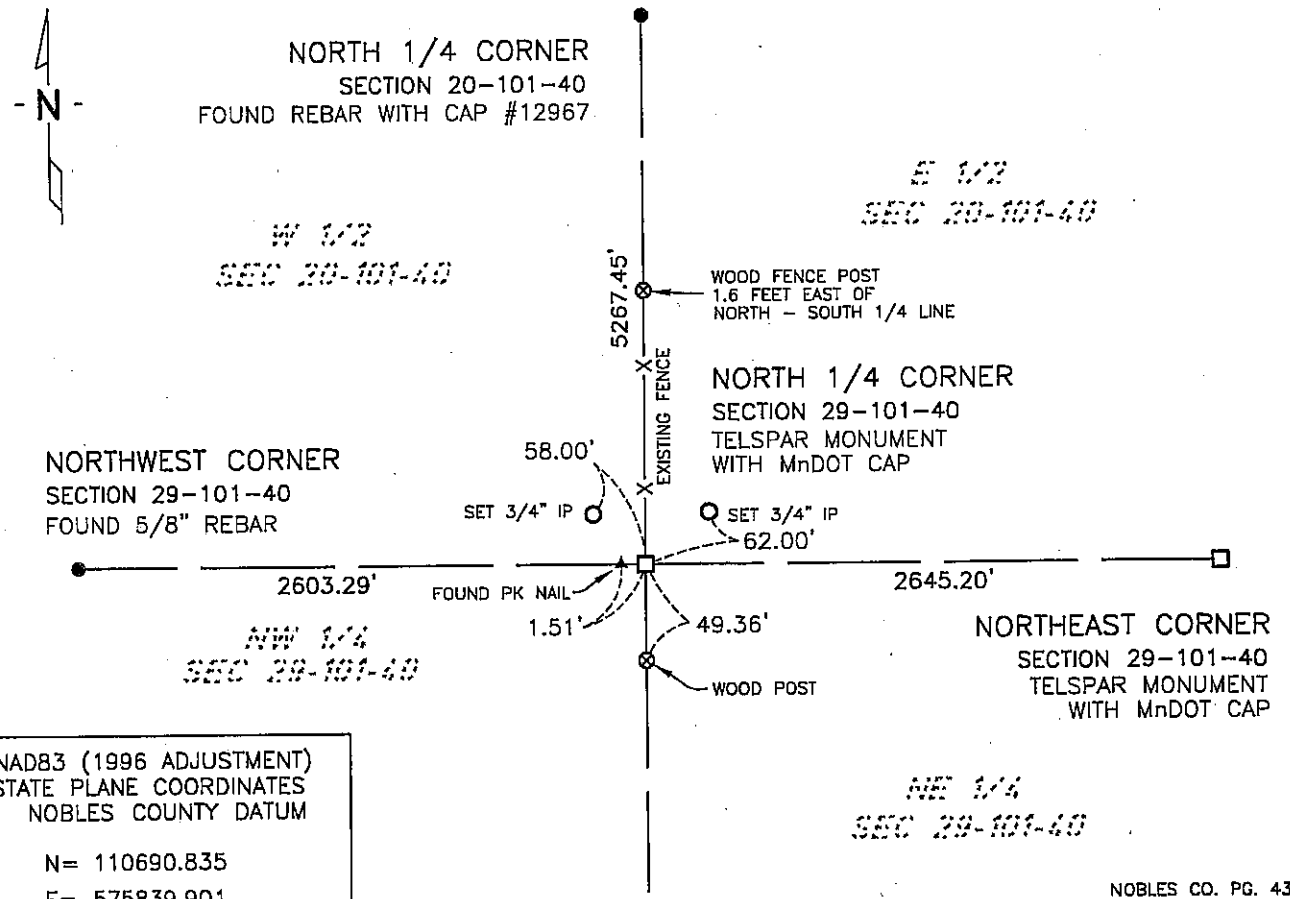
NORTH QUARTER Corner of Section 29, Township 101, Range 40, 5th P.M.

STATE OF MINNESOTA, County of NOBLES

At the corner location shown on the sketch:

- On 11/23/05 found a 5/8" Shaft 4" below the surface of bituminous road
DATE
- left monument as found, lowered monument, removed monument (explain)
- On 4/26/06 placed a 2" X 2" X 30" Telspar Monument with MnDot Cap
DATE
in place of said 5/8" Shaft

SKETCH OF REFERENCE TIES



NAD83 (1996 ADJUSTMENT)
STATE PLANE COORDINATES
NOBLES COUNTY DATUM

N= 110690.835
E= 575839.901

NE 1/4
SEC 29-101-40

NOBLES CO. PG. 43-45
I:\MnDT\M3237611\CAD\CERTS\NQ2910140.DWG

Statement of evidence relative to this corner location is on back of page.

I hereby certify that this document and the data contained herein was prepared by me or under my direct supervision.

Joseph A. Haefner
JOSEPH A. HAEFNER
5-16-2006
DATE

Registration No. 43909

Land surveyor, Professional Engineer
 County Surveyor, County Engineer

OFFICE OF THE COUNTY RECORDER
County of _____

I hereby certify that this document was filed in the Co. Recorders office at ____M. on the _____ day of _____ A.D., 20__

County Recorder _____
By _____, Deputy
DOCUMENT NO. _____

Statement of Evidence:

NORTH QUARTER CORNER
SECTION 29, TOWNSHIP 101 NORTH, RANGE 40 WEST
5th PRINCIPAL MERIDIAN, MINNESOTA

- 14 Oct. 1868 -George G. Howe, U.S. Deputy Surveyor, "East on random between Sec.s 20 & 29" @ 40.00 chs. "Set temp 1/4 post". "N 89-50 W between Sec.s 20 & 29" @ 39.63 chs. "Set post in mound with pits for 1/4 sec. corner", no ties.
- 3 Nov. 1910 -Nobles County Recorder's Office, Surveyor's Record, Volume B, Page 10, by William A. Saxon, County Surveyor, for a survey of Section 20-101-40, where he measured the east-west quarter line, he shows no monumentation, only a fence post at the center of Section 20 and the in place fence line running west.
- 30 Mar. 1912 -Nobles County Recorder's Office, Surveyor's Record, Volume B, Page 18, by William A. Saxon, County Surveyor, for a survey of Section 20-101-40, a post is shown at the center of Section 20.
- 1956 -Nobles County Highway Department grading plans show a stone was assumed at the time of construction.
- 1995 -Nobles County Highway Department records show an 11" Bridge Spike was found and raised, ties are shown as follows:
N&D on Top FE Post S. 49.95'
2X2 Hub With Shiner N.W. 53.75'
2X2 Hub With Shiner N.E. 53.09'
- Nobles County Highway Department records show a 1 3/4" PK Nail was placed after overlay.
- 23 Nov. 2005 -Bolton & Menk, Inc. survey crew found a 5/8" Shaft 4" below the surface of bituminous roadway,

-Bolton & Menk, Inc. survey crew found a PK Nail at the surface of bituminous roadway, 1.51 feet West of above referenced shaft.

-Bolton & Menk, Inc. survey crew found a Nail & Disc on top of a wood fence post 49.36 feet south of above referenced shaft.
- 29 Nov. 2005 -Mark Lathen, Engineering Support Supervisor, Nobles County Highway Department, "One might assume that any monumentation was destroyed with the original grading since the corner sat in a 2 or 3 foot cut and the position was assumed for the 1956 plan"
- 1 Dec. 2005 -Bolton & Menk, Inc. survey crew found an old wood fence post near the center of Section 20. Said post lies 1.6 feet east of a straight line between the North 1/4 Corner of Section 20 and the above referenced shaft.
- 3 Dec. 2005 -Bolton & Menk, Inc. determined the above referenced P.K Nail was incorrectly set after 1995 overlay and the above referenced 5/8" Shaft is the best evidence of the location of the corner.
- 26 April 2006 -Bolton & Menk, Inc. survey crew set a 2" X 2" X 30" Telspar Monument with MnDot Cap in place of the above referenced Shaft.

The evidence is not conclusive as to the true corner location, however the occupational and collateral evidence suggest that this is a reasonable location as to the corner. Additional information regarding the preparation of this certificate can be obtained by contacting: Bolton & Menk, Inc., 219 North Main Street, Fairmont, MN 56031.