

# CERTIFICATE OF LOCATION OF GOVERNMENT CORNER

NORTH QUARTER Corner of Section 16, Township 101N, Range 40W, 5th P.M.

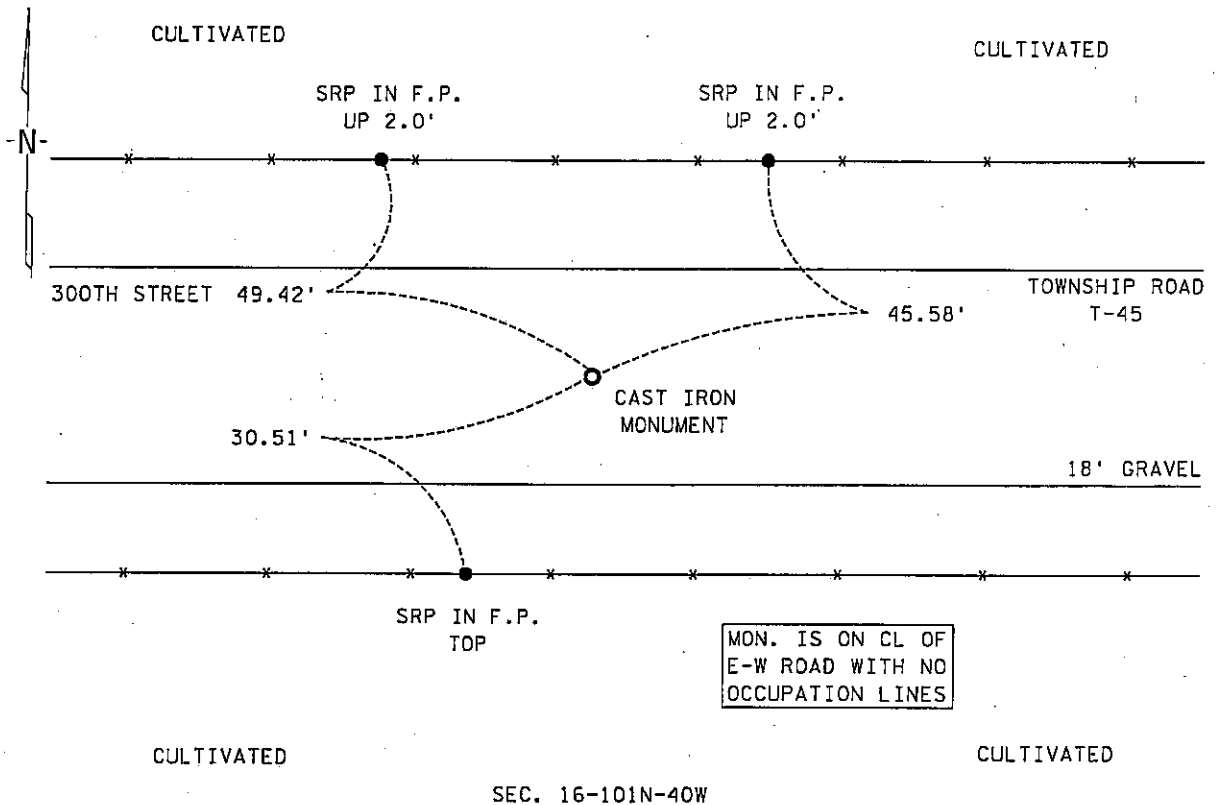
STATE OF MINNESOTA, County of NOBLES

At the corner location shown on the sketch :

- On 4 JUNE 1999 found A MINNESOTA HIGHWAY DEPT. CAST IRON MONUMENT  
DOWN 5 1/2".  
 left monument as found,  lowered monument,  removed monument (explain)
- On \_\_\_\_\_ set \_\_\_\_\_

### Sketch of reference ties

SEC. 9-101N-40W



Statement of evidence relative to this corner location is on back page

I hereby certify that this document and the data contained herein was prepared by me or under my direct supervision.

[Signature] 29 June 05  
 Signature Date

Registration No. 22683

- Land Surveyor,  Professional Engineer  
 County Surveyor,  County Engineer

### OFFICE OF THE COUNTY RECORDER

County of NOBLES

I hereby certify that this document was filed in the Co. Recorders office at \_\_\_\_\_ .M. on the day of \_\_\_\_\_ A.D., 20

County Recorder \_\_\_\_\_

By \_\_\_\_\_, Deputy

DOCUMENT NO. \_\_\_\_\_

Statement of Evidence:

NORTH QUARTER CORNER  
SECTION 16, TOWNSHIP 101 NORTH, RANGE 40 WEST, 5th P.M.  
NOBLES COUNTY, MINNESOTA

- 13 Oct. 1868 - George G. Howe, U.S. Deputy Surveyor, his notes read: "East on true line between Secs 9 & 16, Var. 11° 30'." @ 40.00 chs. "Set post in mound with pits for 1/4 sec. corner", no ties.
- 18 May 1925 - Nobles County Recorder's Office, Surveyor's Record, Volume B, Page 148, by John Spolum, RLS # 421, County Surveyor, for a survey of Section 16-101-40, shows an iron bolt at the North Quarter Corner with a distance west of 2640' to the corresponding section corner.
- 20 Sept. 1930 - Nobles County Recorder's Office, Surveyor's Record, Volume B, Page 168, by C.W. Woolsteincroft, C.E., for a survey of Section 9-101-40, states that he found old corner stake for the South Quarter Corner and that he placed a 6" X 10" X 14" stone on top of it with a distance west of 2646' to the corresponding section corner.
- 14 Dec. 1982 \* - Martin Land Surveying, Inc., of Worthington, Minnesota, Job. No. 82065, a survey by Gary D. Martin, RLS # 12967, notes for Sec. 16-101-40 shows the North Quarter Corner with two notes, one stating that he did not shoot it, a second note stating "Fd. St. per res by Mn/DOT."
- 11 July 1983 - Minnesota Department of Transportation, Certificate of Location of Gov't Corner, North Quarter Corner of Sec. 16-101-40, unsigned, states a survey crew using a tractor backhoe, found a 10" X 13" X 10" stone 11" below the gravel surface, directly below the stone at a depth of 2.0 feet to 3.7 feet was the remains of a rotten oak stake, the stone monument was removed and a Mn/DOT cast iron monument was placed over the rotten oak stake. Ties include: SRP in FP 45.64' NE; SRP in FP 30.49' S; SRP in FP 49.42' NW.
- 4 June 1999 - Minnesota Department of Transportation, survey crew working on TH 60, SP 5305-51, found the previously set Mn/DOT cast iron monument for the North Quarter Corner of Sec. 16-101-40. Returning in the first week of Dec. 2003 to perform a GPS survey where a distance west of 2658.70' was computed to the corresponding section corner.

\* Gary D. Martin, RLS # 12967, owned and operated Martin Land Surveying, Inc., in Worthington, Minnesota and sold the business in 1987, Mr. Martin is currently practicing in Holly Springs, Georgia.

There is a discrepancy in the written evidence regarding the size of the stone but I believe this to be the true corner location based on the old wooden stake for the 1983 excavation, which is confirmed by the occupational and collateral evidence. Additional information regarding the preparation of this certificate can be obtained by contacting: Survey Section, Minnesota Department of Transportation, 501 South Victory Drive, Mankato, MN 56001.