

CERTIFICATE OF LOCATION OF GOVERNMENT CORNER

NORTH QUARTER Corner of Section 17, Township 101N, Range 40W, 5th P.M.

STATE OF MINNESOTA, County of NOBLES

At the corner location shown on the sketch :

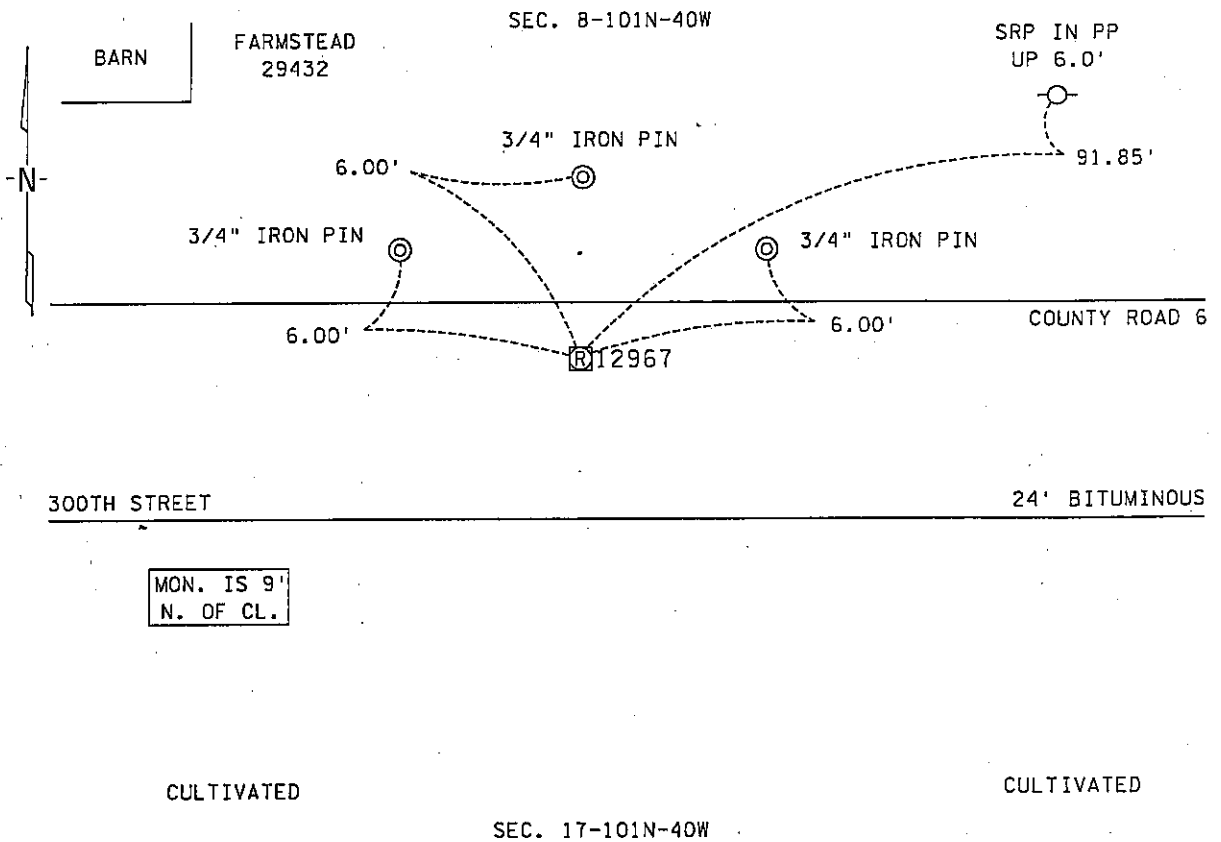
On 7 JUNE 1999 found REBAR WITH PLASTIC CAP STAMPED RLS # 12967,

DOWN 0.2'

left monument as found, lowered monument, removed monument (explain)

On _____ set _____

Sketch of reference ties



Statement of evidence relative to this corner location is on back page

I hereby certify that this document and the data contained herein was prepared by me or under my direct supervision.

[Signature] 29 Nov. 05
 Signature Date

Registration No. 22683

Land Surveyor, Professional Engineer

County Surveyor, County Engineer

OFFICE OF THE COUNTY RECORDER

County of NOBLES

I hereby certify that this document was filed in the Co. Recorders office at _____ .M. on the _____ day of _____ A.D., 20

County Recorder _____

By _____, Deputy

DOCUMENT NO. _____

Statement of Evidence:

NORTH QUARTER CORNER
SECTION 17, TOWNSHIP 101 NORTH, RANGE 40 WEST, 5th P.M.
NOBLES COUNTY, MINNESOTA

- 14 Oct. 1868 - George G. Howe, U.S. Deputy Surveyor, his notes read: "East on Random between Section 8 & 17, Var. 12° 00' E." @ 40.00 chs. "Set post for temp 1/4 sec. Cor." "N. 89° 31' W. on True between Secs. 8 & 17, Var. 12° 00' E." @ 39.57½ chs. "Set Post in mound with pits for 1/4 sec. corner", no ties.
- 30 June 1917 - Chicago, St. Paul, Minneapolis & Omaha Railway Company, Right of Way and Track Map, St. Paul to Sioux City, shows the north line of the NE ¼ of Sec. 17101-40 at station 3268+58, which is also called the Highway x-ing.
- Circa 1956 - Nobles County Highway Department, Bigelow Twp. Corner Book, shows a stake in place for the South Quarter Corner of Sec. 8-101-40.
- Circa 1960 - Nobles County Highway Department, Bigelow Twp. Corner, shows an iron pin in place for the South Quarter Corner of Sec. 8-101-40.
- 1 Dec. 1982 * - Martin Land Surveying, Inc., of Worthington, Minnesota, field notes by Gary Martin, RLS # 12967, read "Fd nail 9.25 feet north of centerline, Fd bent bridge spike, removed the same, dug down 1.0 to 1.5 feet to another bridge spike, tied spike, removed then set a ½" re-bar with cap to surface. Ties are: N & D in FP 56.31' NW; N & BC in FP 41.25' NW; N & BC in FP 48.30' NE; Bridge Spike = (POT) on CL 9.34' S.
- 14 July 1983 - Minnesota Department of Transportation, Land Tie Field Notes, TH 60, S.P. 5305, a survey crew using a tractor backhoe excavated along side of re-bar, directly below ½" re-bar at 2.2' found a 1" X 2" X 15" wood stake for the North Quarter Corner of Sec. 17-101-40, no other evidence of a monument was found.
- 23 Jan. 1989 ** - Bell Surveying, Inc. of Worthington, Minnesota, Job No. 87001, a survey by Timothy P. Bell, RLS # 16093, for part of Section 8-101-40, shows a found monument at the South Quarter Corner.
- 21 July 2000 - Minnesota Department of Transportation survey crew working on TH 60, SP 8827-10 & 5305-51 found ½" re-bar with RLS cap # 12967 near the surface and 9' north of County Road 6 for the North Quarter Corner of Sec. 17-101-40. Ties include: SRP in PP 91.85' NE; SE Cor. Barn Foundation 151.17' NW; SRP Top of FP 116.92' N. Returning in the first week of Dec. 2003 to perform a GPS survey where a distance west of 2628.23' and a distance east of 2630.62' were computed to corresponding section corners. At this time the plastic cap had been damaged.

* Gary D. Martin, RLS # 12967, owned and operated Martin Land Surveying, Inc., of Worthington, Minnesota and sold the business in 1987. Mr. Martin is now practicing in Holly Springs, Georgia.

** Timothy P. Bell, RLS # 16093, owned and operated Bell Surveying, Inc., of Worthington, Minnesota, and went out of business some time around 1990. Mr. Bell's Registration Number is listed in the Minnesota Society of Professional Surveyors Roster in the Deceased or Not Practicing category.

The written evidence shows a large gap between 1868 and 1956 and it is unclear if the original corner location has been sufficiently perpetuated. The occupational and collateral evidence support this as the reasonable location for the corner. Additional information regarding the preparation of this certificate can be obtained by contacting: Survey Section, Minnesota Department of Transportation, 501 South Victory Drive, Mankato, MN 56001.