

CERTIFICATE OF LOCATION OF GOVERNMENT CORNER

NORTH QUARTER Corner of Section 30, Township 101N, Range 40W, 5th P.M.

STATE OF MINNESOTA, County of NOBLES

At the corner location shown on the sketch :

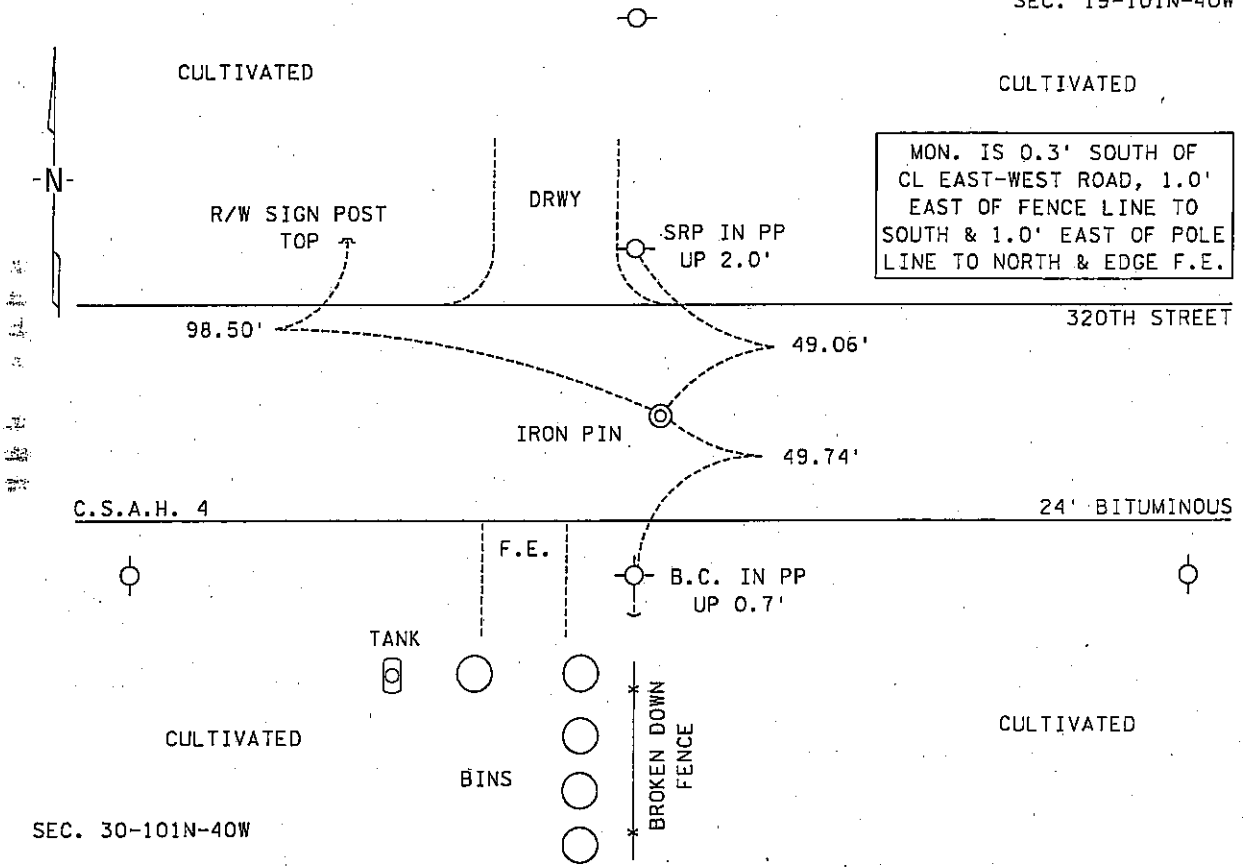
On 4 JANUARY 2001 found A 1/2" IRON PIN, DOWN 0.15'.

left monument as found, lowered monument, removed monument (explain)

On _____ set _____

Sketch of reference ties

SEC. 19-101N-40W



Statement of evidence relative to this corner location is on back page

I hereby certify that this document and the data contained herein was prepared by me or under my direct supervision

[Signature] 29 Nov. 05
 Signature Date

Registration No. 22683
 Land Surveyor, Professional Engineer
 County Surveyor, County Engineer

OFFICE OF THE COUNTY RECORDER

County of NOBLES

I hereby certify that this document was filed in the Co. Recorders office at _____ .M. on the day of _____ A.D., 20

County Recorder _____
 By _____, Deputy

DOCUMENT NO. _____

Statement of Evidence:

NORTH QUARTER CORNER
SECTION 30, TOWNSHIP 101 NORTH, RANGE 40 WEST, 5th P.M.
NOBLES COUNTY, MINNESOTA

- 14 Oct. 1868 - George G. Howe, U.S. Deputy Surveyor, his notes read: "West on random between Sec.s 19 & 30, Var. 11° 25' E." @ 40.00 chs. "Set temp 1/4 post". "S. 89° 20' E. between Sec.s 19 & 30, Var. 11° 25' E." @ 39.55 chs. "Set post in mound with pits for 1/4 sec. corner", no ties.
- 30 June 1917 - Chicago, St. Paul, Minneapolis & Omaha Railway Company, Right of Way and Track Map, St. Paul to Sioux City, shows the north line of the NE ¼ of Sec. 30-101-40 at station 3384+04 which is also the highway x-ing.
- 15 Nov. 1993 - Moseng & Zieske Land Surveying, Inc., of Windom, Minnesota, Survey No. N9302S, by Lyle E. Moseng, RLS # 11943, for a survey of the Part of the East Half of Section 30-101-40, shows a found ½" iron pin in place at the North Quarter Corner with a distance east of 2633.00' and a distance west of 2637.17' to corresponding section corners.
- 4 Jan. 2001 - Minnesota Department of Transportation, survey crew working on TH 60, SP 5305-51, found a ½" iron pin, down 0.15', for the North Quarter Corner of Sec. 30-101-40. Returning in the first week of Dec. 2003 to perform a GPS survey where the distance west of 2637.23' and a distance east of 2633.02' were computed to corresponding section corners.

The written evidence is sparse and does not give a picture as to the true corner location, however the distance ties east and west verify the 1993 position together with the occupational and collateral evidence suggests that this is a reasonable location as to the corner. Additional information regarding the preparation of this certificate can be obtained by contacting: Survey Section, Minnesota Department of Transportation, 501 South Victory Drive, Mankato, MN 56001.