

CERTIFICATE OF LOCATION OF GOVERNMENT CORNER

NORTH QUARTER Corner of Section 4, Township 101N, Range 40W, 5th P.M.

STATE OF MINNESOTA, County of NOBLES

At the corner location shown on the sketch :

On 12 JANUARY 2001 found A REBAR WITH PLASTIC CAP STAMPED RLS # 12967,

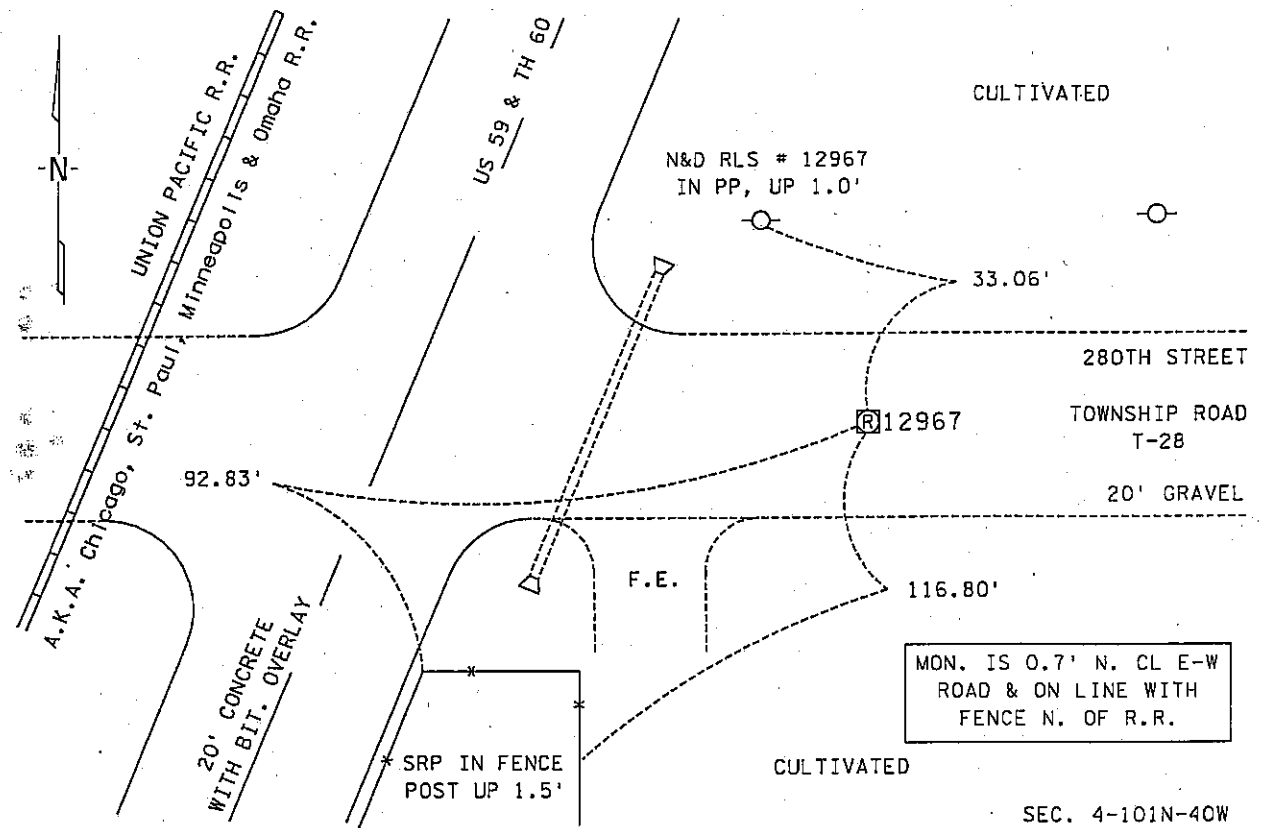
DOWN 1.1'

left monument as found, lowered monument, removed monument (explain)

On _____ set _____

SEC. 33-102N-40W

Sketch of reference ties



Statement of evidence relative to this corner location is on back page

I hereby certify that this document and the data contained herein was prepared by me or under my direct supervision.

[Signature] _____ Date 29/Jan/05

Registration No. 22683

- Land Surveyor, Professional Engineer
 County Surveyor, County Engineer

OFFICE OF THE COUNTY RECORDER

County of NOBLES

I hereby certify that this document was filed in the Co. Recorders office at _____ .M. on the day of _____ A.D., 20__

County Recorder _____
 By _____, Deputy

DOCUMENT NO. _____

Statement of Evidence:

NORTH QUARTER CORNER
SECTION 4, TOWNSHIP 101 NORTH, RANGE 40 WEST, 5th P.M.
NOBLES COUNTY, MINNESOTA

- 12 July 1867 - Thomas B. Walker, U.S. Deputy Surveyor, his notes read: "East Random Line Between Towns 101 & 102, Range 40." "I set temporary corners along line & at intersect town line 15.50 chs. north of corner." "Upon examination; I find my instrument grossly out of repair & adjustment." "Declination Bar badly bent by shutting the box cover on it, telescope axis askew as also telescope sights." "As my line can not be straight, I now sure west Random line & at a point 130 lks. north of Town Corner." "My correction will be 21.23 lks south per mile, the excess remaining at the west end." "S. 89° 51' E. between Sec.s 4 & 33, Var. 11° 45'." @ 40.00 chs. "1/4 Sec. Cor. Post in mound", no ties.
- 22 Apr. 1892 - Nobles County Recorder's Office, Surveyor's Record, Volume A-2, Page 50, by Milton S. Smith, County Surveyor, for a survey for the Towns of Bigelow and Worthington, states that he found the original stake in mound and pits and drove an iron bolt for the North Quarter Corner of Sec. 4-101-40 with a distance east of 2628' to the corresponding section corner.
- 31 Oct. 1893 - Nobles County Recorder's Office, Surveyor's Record, Volume A-2, Page 134, by Milton S. Smith, County Surveyor, for a survey of Section 4-101-40, states that he found the original stake in mound and pits and an iron bolt with a distance east of 2628' to the corresponding section corner.
- 13 June 1896 - Nobles County Recorder's Office, Surveyor's Record, Volume A-2, Page 224, by Milton S. Smith, County Surveyor, for a survey of Section 4-101-40, states that he set a stone at the North Quarter Corner with a distance west of 2668.8' to the corresponding section corner.
- 30 June 1917 - Chicago, St. Paul, Minneapolis & Omaha Railway Company, Right of Way and Track Map, St. Paul to Sioux City, shows the north line of the NW ¼ of Sec. 4-101-40 at station 3150+23, which is also called the Highway x-ing.
- 19 Oct. 1978 * - Martin Land Surveying, Inc. of Worthington, Minnesota, Job No. 78070, a survey by Gary D. Martin, RLS # 12967, for a part of Sec. 34-102-40, shows a ½" rebar set per calc. sheet for the South Quarter Corner with ties: 4" Mult. Tree 31.02' SE; 8" Tree 23.15' SSE; PP 29.61' NW; R/W Post 90.93' WSW.
- 12 Jan. 2001 - Minnesota Department of Transportation, survey crew working on TH 60, SP 5305-51, found a rebar with plastic cap, stamped RLS # 12967, down 1.1' for the North Quarter Corner of Sec. 4-101-40 and set ties. Returning in the first week of Dec. 2003 to perform a GPS survey where the distance west of 2670.56' and a distance east of 2620.89' were computed to corresponding section corners.

* Gary D. Martin, RLS # 12967, owned and operated Martin Land Surveying, Inc., in Worthington, Minnesota and sold the business in 1987, Mr. Martin is currently practicing in Holly Springs, Georgia.

The written evidence shows a large gap of unrecorded and unavailable information about this corner location between 1896 and 1978, however the occupational and collateral evidence suggest that this is a reasonable location as to the corner. Additional information regarding the preparation of this certificate can be obtained by contacting: Survey Section, Minnesota Department of Transportation, 501 South Victory Drive, Mankato, MN 56001.