

CERTIFICATE OF LOCATION OF GOVERNMENT CORNER

NORTH QUARTER Corner of Section 8, Township 101N, Range 40W, 5th P.M.

STATE OF MINNESOTA, County of NOBLES

At the corner location shown on the sketch :

On 21 JULY 2000 found A REBAR WITH PLASTIC CAP STAMPED RLS # 16093

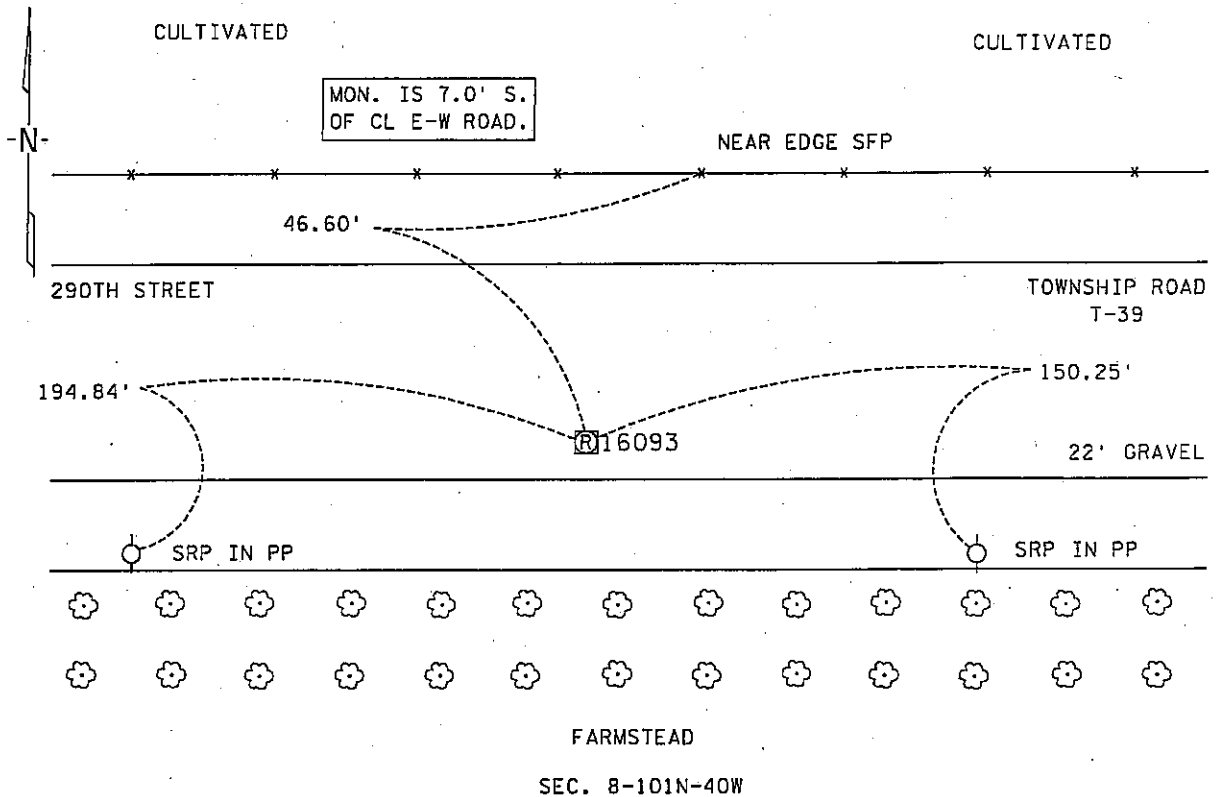
DOWN 0.4'

left monument as found, lowered monument, removed monument (explain)

On _____ set _____

Sketch of reference ties

SEC. 5-101N-40W



Statement of evidence relative to this corner location is on back page

I hereby certify that this document and the data contained herein was prepared by me or under my direct supervision.

[Signature] _____ Date 29 Nov. 05

Registration No. 22683.
 Land Surveyor, Professional Engineer
 County Surveyor, County Engineer

OFFICE OF THE COUNTY RECORDER

County of NOBLES

I hereby certify that this document was filed in the Co. Recorders office at _____ .M. on the day of _____ A.D., 20

County Recorder _____
 By _____, Deputy

DOCUMENT NO. _____

Statement of Evidence:

NORTH QUARTER CORNER
SECTION 8, TOWNSHIP 101 NORTH, RANGE 40 WEST, 5th P.M.
NOBLES COUNTY, MINNESOTA

- 15 Oct. 1868 - George G. Howe, U.S. Deputy Surveyor, his notes read: "East on Random between Section 5 & 8, Var. 11° 30' E." @ 40.00 chs. "Set post for temporary 1/4 post". "S. 89° 32' W. between Secs 5 & 8, Var 11° 30' E." @ 39.79 chs. "Set post in mound with pits for 1/4 section corner", no ties.
- 30 June 1917 - Chicago, St. Paul, Minneapolis & Omaha Railway Company, Right of Way and Track Map, St. Paul to Sioux City, shows the north line of the NE ¼ of Sec. 8-101-40 at station 3213+95 which is also called the Highway x-ing.
- Circa 1987 * - Bell Surveying, Inc., of Worthington, Minnesota, Job No. 87042, a survey by Timothy P. Bell, RLS # 16093, shows a set monument for the South Quarter Corner of Section 5-101-40 with a distance west of 2647.22' to the Southwest Corner and a distance east of 2647.22' to the Southeast Corner.
- 21 July 2000 - Minnesota Department of Transportation survey crew working on TH 60, SP 8827-10 & 5305-51 found an iron with a plastic cap stamped RLS # 16093, down 0.4' and 7' south of Township Road T-39 for the North Quarter Corner of Sec. 8-101-40. Returning in the first week of Dec. 2003 to perform a GPS survey where a distance west of 2646.42' and a distance east of 2647.01' was computed to corresponding section corners.

* Timothy P. Bell, RLS # 16093, owned and operated Bell Surveying, Inc., of Worthington, Minnesota, and went out of business some time around 1990. Mr. Bell's Registration Number is listed in the Minnesota Society of Professional Surveyors Roster in the Deceased or Not Practicing category.

The written evidence shows a large gap of unrecorded and unavailable information about this corner location between 1868 and 1987, Bell's work shows him setting his iron at the lost location and the occupational and collateral evidence suggest nothing to disagree with his decision to set it there. Additional information regarding the preparation of this certificate can be obtained by contacting: Survey Section, Minnesota Department of Transportation, 501 South Victory Drive, Mankato, MN 56001.