

# CERTIFICATE OF LOCATION OF GOVERNMENT CORNER

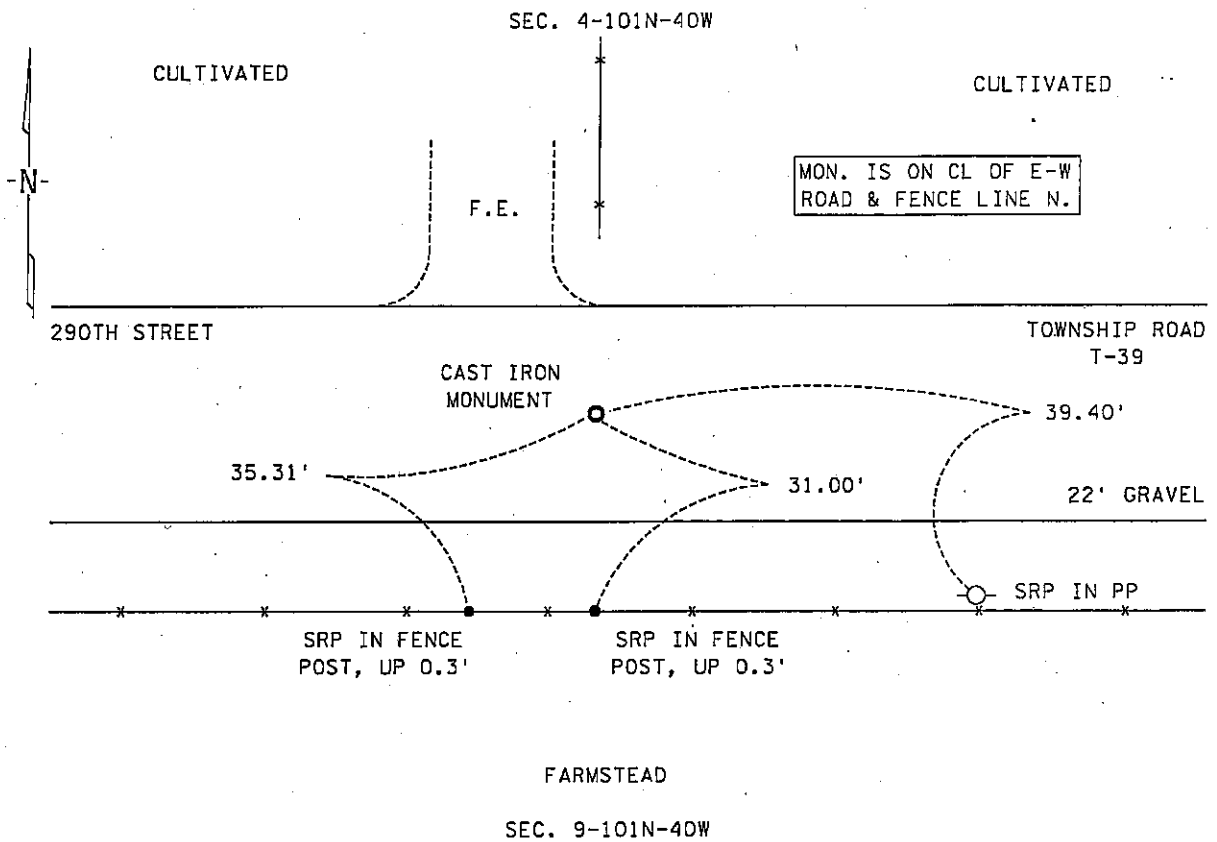
NORTH QUARTER Corner of Section 9, Township 101N, Range 40W, 5th P.M.

STATE OF MINNESOTA, county of NOBLES

At the corner location shown on the sketch :

- On 21 JULY 2000 found A 2" X 2" UNISTRUT WITH MN/DOT CAST IRON CAP,  
DOWN 0.46'  
 left monument as found,  lowered monument,  removed monument (explain)
- On \_\_\_\_\_ set \_\_\_\_\_

Sketch of reference ties



Statement of evidence relative to this corner location is on back page

I hereby certify that this document and the data contained herein was prepared by me or under my direct supervision.

*[Signature]* \_\_\_\_\_  
Signature Date 29 Nov. 05

Registration No. 22683

- Land Surveyor,  Professional Engineer
- County Surveyor,  County Engineer

OFFICE OF THE COUNTY RECORDER

County of NOBLES

I hereby certify that this document was filed in the Co. Recorders office at \_\_\_\_\_ .M. on the day of \_\_\_\_\_ A.D., 20

County Recorder \_\_\_\_\_

By \_\_\_\_\_, Deputy

DOCUMENT NO. \_\_\_\_\_

Statement of Evidence:

NORTH QUARTER CORNER  
SECTION 9, TOWNSHIP 101 NORTH, RANGE 40 WEST, 5th P.M.  
NOBLES COUNTY, MINNESOTA

- 15 Oct. 1868 - George G. Howe, U.S. Deputy Surveyor, his notes read: "From Wit. Cor. 3 chs. north of Sec. Cor. to 4, 5, 8 & 9, I rand east 3 chs. thence south 3 chs. to line thence East on Random between Secs 4 & 9, Var. 12° counting for true corner." @ 40.0 chs. "Set temporary 1/4 post" @ 40.03 ½ chs. "West between Secs. 4 & 9, Var. 12°." @40.03½ chs. "Set post in mound with pits for 1/4 sec. corner." No ties.
- 31 Oct. 1893 - Nobles County Recorder's Office, Surveyor's Record, Volume A-2, Page 134, by Milton S. Smith, County Surveyor, for a survey of Section 4-101-40, shows that a stone was set from the original stake for the South Quarter Corner with a distance east of 2625.4' and a distance west of 2635' to corresponding section corners.
- 20 Sept. 1930 - Nobles County Recorder's Office, Surveyor's Record, Volume B, Page 168, by C.W. Woolstencroft, C.E., for a survey of Section 9-101-40, states that he found old stone at the North Quarter Corner with a distance west of 2634' to the corresponding section corner.
- 12 Nov. 1986 - Minnesota Department of Transportation, Certificate of Location of Gov't Corner, North Quarter Corner of Sec. 9-101-40, unsigned, states that a survey crew using a tractor backhoe, found a 18" X 18" X 14" granite stone 0.8' with no markings for this corner. This stone was shattered by the jack hammer while breaking through the frost. After tying out the center of the remains additional digging was done and nothing was found, a Mn/DOT cast iron monument was set at the stones location. Ties include: SRP in PP 39.40' SE; SRP in FP 31.0' S; SRP in FP 35.31' SE.
- 1 June 1995 - Zieske Land Surveying, Inc., of Windom, Minnesota, Survey No. N 9501 S, by Perry Zieske, RLS # 23008, references states a found monument "A) MnDOT MONUMENT (6" DOWN) SE COR. SW 1/4 SEC. 4".
- 21 July 2000 - Minnesota Department of Transportation, survey crew working on TH 60, SP 5305-51, found the previously set Mn/DOT cast iron monument from 1983 for the North Quarter Corner of Sec. 9-101-40. Returning in the first week of Dec. 2003 to perform a GPS survey where a distance west of 2632.86' is computed to the corresponding section corner.

The evidence is conclusive as to the true corner location and the occupational and collateral evidence support this, I accept this as the true corner location. Additional information regarding the preparation of this certificate can be obtained by contacting: Survey Section, Minnesota Department of Transportation, 501 South Victory Drive, Mankato, MN 56001.