

# CERTIFICATE OF LOCATION OF GOVERNMENT CORNER

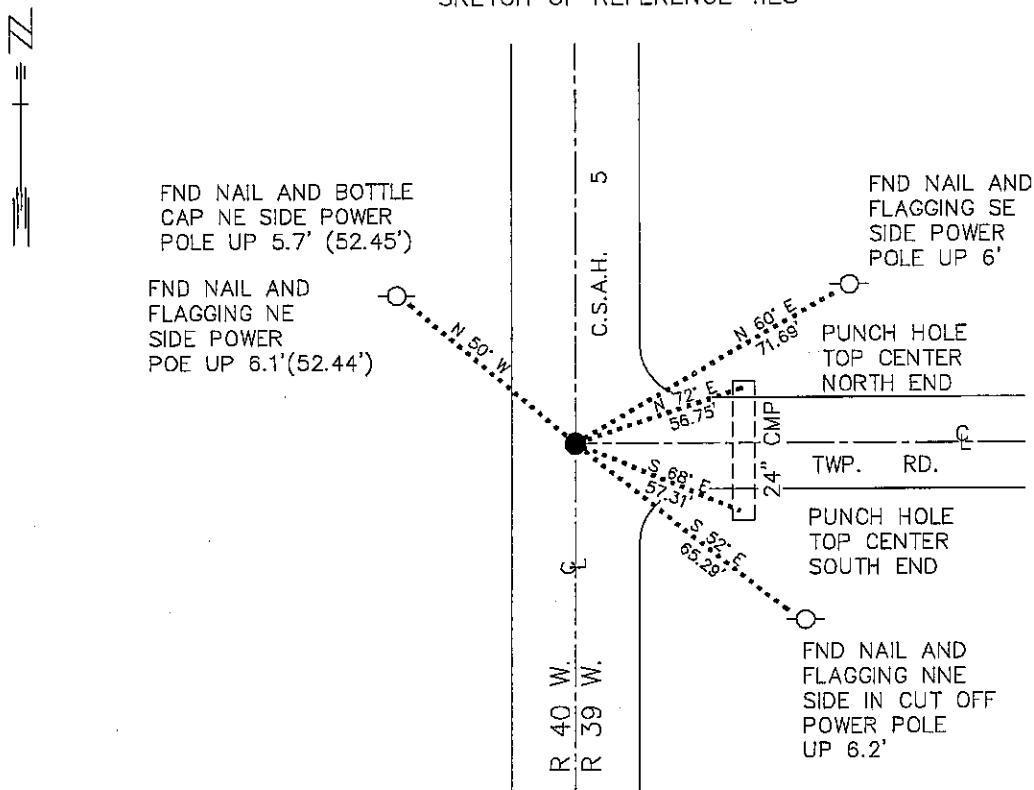
NORTHEAST Corner of Section 12, Township 101 N., Range 40 W., 5th P.M.

STATE OF MINNESOTA, County of NOBLES

At the corner location shown on the sketch:

- On 7/7/92 found on ILLEGIBLE PLASTIC CAPPED IRON MONUMENT DOWN 0.1'  
DATE
- left monument as found,  lowered monument,  removed monument (explain)
- On \_\_\_\_\_ Placed a \_\_\_\_\_  
DATE

## SKETCH OF REFERENCE TIES



BEARINGS OBSERVED WITH COMPASS

Statement of evidence relative to this corner location is on back of page. 7/15/92 WMA01400

I hereby certify that this document and the data contained herein was prepared by me or under my direct supervision.

Russ W. Shippert 7-24-92  
SIGNATURE DATE

- Registration No. 17003
- Land Surveyor,  Professional Engineer
  - County Surveyor,  County Engineer

OFFICE OF THE COUNTY RECORDER

County of Nobles

I hereby certify that this document was filed in the Co. recorders office at 8:10 A.M. on the 31st day of July A.D., 1992

County Recorder Jay W. Howard  
By \_\_\_\_\_, Deputy

DOCUMENT NO. 248955

Tract 277 Compared du  
Photo 204  
Map 705

Northeast Corner Section 12, Township 101 North, Range 40 West, Page 1 of 2

The DNR Bureau of Engineering contacted the following for survey information:

Minnesota Secretary of State's Office  
 Nobles County Recorder's Office  
 Nobles County Highway Engineer's Office  
 Sioux Engineering of Windom  
 Madsen Land Surveying of Fairmont

1867 US General Land Office notes obtained from the Secretary of State's Office show the corner marked with a post and charred stake in a mound of earth with pits per instructions.

No Surveyor's Record Book A-2, page 226, obtained from the County Date Recorder's Office contains a survey by M. S. Smith. Survey shows that a stone was set for corner but no information is given on how its location was determined. The corner is shown:

2661 feet from the east quarter corner of Section 12

1922 June, Construction notes for CSAH No. 5 obtained from the County Highway Engineer's Office show that a stone was found at corner.

1948 Construction notes for CSAH No. 5 obtained from the County Highway Engineer's Office show corner at PI Station 522+16.83 but do not indicate what was found or set. The following ties are shown to corner:

nail & disc in power pole, northwest, 58.8 feet  
 nail & disc in fence post, northeast, 87.5 feet

1948 Construction plan sheets for CSAH No. 5 obtained from the County Highway Engineer's Office show a 1"x2" hub at PI Station 522+16.83 which is an assumed location for the corner. The following ties are shown to corner:

nail & disc in power pole, northwest, 37.49 feet  
 nail & disc in corner fence post, northeast, 44.93 feet  
 in line with the centerline of road east  
 2660.61 feet from the east quarter corner of Section 12

No An unsigned Certificate of Location of Government Corner obtained Date from the County Highway Engineer's Office contains a compilation of records in the Engineer's Office that pertain to this corner. The following is shown:

1896 - stone  
 1922 - stone  
 1951 - stake  
 1965 - stake

Northeast Corner Section 12, Township 101 North, Range 40 West, Page 2 of 2

The following ties are shown to corner:

on the centerline of a north-south road  
in line with the centerline of a road east  
nail & disc in power pole, northwest, 58.96 feet  
nail & disc in power pole, northeast, 71.02 feet  
nail & disc in telephone pole, southeast, 55.53 feet  
nail & disc in fence post, southwest, 61.23 feet

1992 July, DNR Bureau of Engineering consulted with Steve Schnieder, County Highway Engineer, about monuments at government corners. Steve said that since about 1960 the County Highway Department has tried to maintain a surface monument for government corners that are in County Roads. Steve also said that the surface monuments have been set directly over the monument of record ie. stone. Being surface monuments have been set over the monument of record at government corners, Steve said that no excavating below surface monuments is allowed.

1992 July, DNR Bureau of Engineering found an illegible plastic capped iron monument down 0.1 of a foot at corner. Searched for and found record ties as shown on sketch of reference ties but were unable to get the same distances. The capped iron monument was found to be:  
on the centerline of north-south CSAH No. 5  
in line with the centerline of road east  
2659.95 feet from the east quarter corner of Section 12

Analysis of the above information led the DNR Bureau of Engineering to conclude that the found plastic capped iron monument marks the obliterated location of the corner.

