

# CERTIFICATE OF LOCATION OF GOVERNMENT CORNER

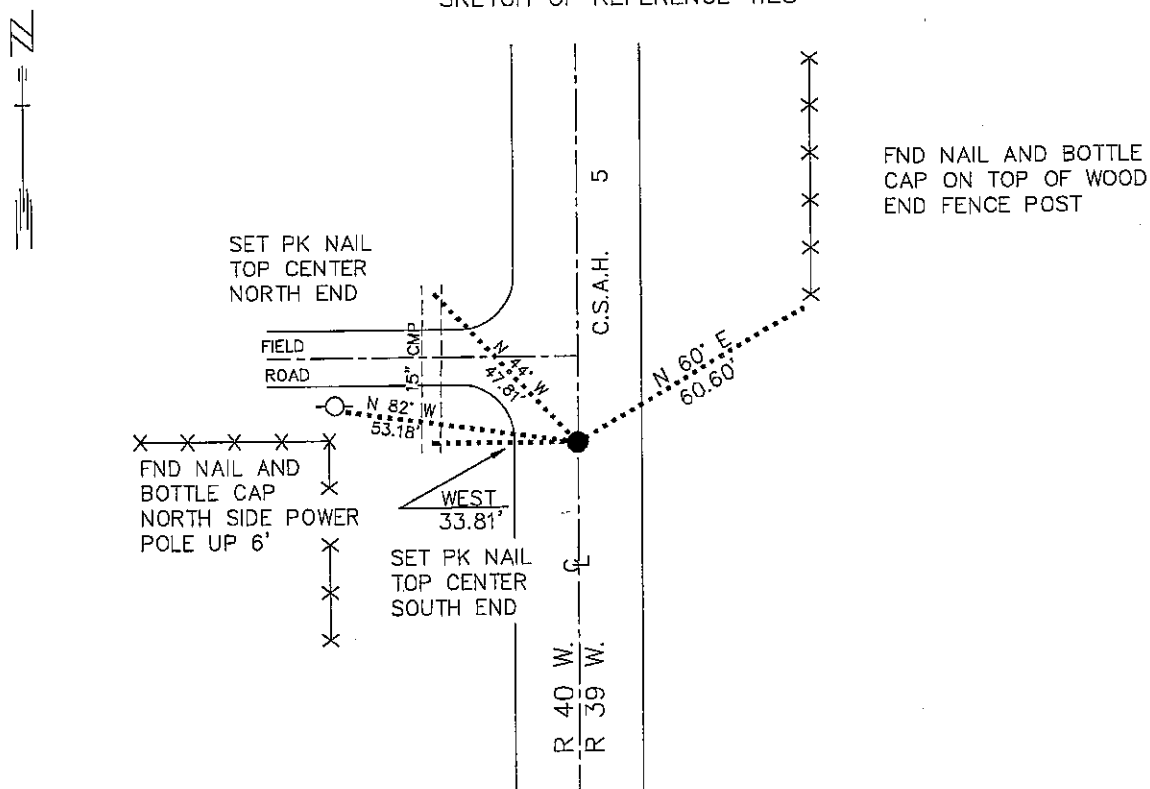
NORTHEAST Corner of Section 13, Township 101 N., Range 40 W., 5th P.M.

STATE OF MINNESOTA, County of NOBLES

At the corner location shown on the sketch:

- On 7/6/92 found a 3/4" INSIDE DIAMETER IRON PIPE WITH A UNION ON TOP  
DATE DOWN 0.9'
- left monument as found,  lowered monument,  removed monument (explain)
- On 7/6/92 Placed a 3/4" X 13 1/4" IRON ROD WITH ALUMINUM CAP  
DATE STAMPED "DNR SURVEY MARKER", FLUSH

### SKETCH OF REFERENCE TIES



BEARINGS OBSERVED WITH COMPASS

Statement of evidence relative to this corner location is on back of page. 7/15/92 WMA01400

I hereby certify that this document and the data contained herein was prepared by me or under my direct supervision.

Bruce W. Sheppard 7-24-92  
SIGNATURE DATE

Registration No. 17003

- Land Surveyor,  Professional Engineer
- County Surveyor,  County Engineer

OFFICE OF THE COUNTY RECORDER  
County of Nobles

I hereby certify that this document was filed in the Co. recorders office at 8:20 A. M. on the 31st day of July A.D., 1992

County Recorder Jane Howard  
By \_\_\_\_\_, Deputy

DOCUMENT NO. 248357

Tract Map Compared to Photo

The DNR Bureau of Engineering contacted the following for survey information:

Minnesota Secretary of State's Office  
 Nobles County Recorder's Office  
 Nobles County Highway Engineer's Office  
 Sioux Engineering of Windom  
 Madsen Land Surveying of Fairmont  
 Lyle Moseng and Associates of Marshall

1867 US General Land Office notes obtained from the Secretary of State's Office show the corner in a marsh. A witness corner was set 5.00 chains (330.00 feet) North and marked with a post in a mound per instructions.

No Surveyor's Record Book A-2, page 226, obtained from the County Date Recorder's Office contains a survey by M. S. Smith. Survey shows that the witness corner was found and a stone was set in its place. The section corner was established 5.00 chains south of the witness corner and marked with a stone. The section corner was found to be:  
 2713.4 feet from the east quarter corner of Section 12  
 2641.2 feet from the north quarter corner of Section 13

1888 Surveyor's Record Book A-2, page 302, obtained from the County Recorder's Office contains a survey, surveyor not indicated. Survey shows a stone at corner but does not indicate if found or set. The corner is shown:  
 2713.4 feet from the east quarter corner of Section 12  
 No information is given about the witness corner.

1922 March, Construction notes for CSAH No. 5 obtained from the County Highway Engineer's Office show that a stone was found at corner. The following ties are shown to corner:  
 5 feet west of old line  
 nail & disc in leaning fence post, west, 34.8 feet  
 nail & disc in power pole, northwest, 57.15 feet  
 nail & disc in telephone pole, northeast, 54.25 feet

1935 Surveyor's Record Book B, page 174, obtained from the County Recorder's Office contains a survey by G. D. McMurtry, County Surveyor. Survey shows corner but does not indicate what was found or set. The corner is shown:  
 20 rods (330.00') south of a stone  
 2640.2 feet from the north quarter corner of Section 13  
 1374.5 feet from a north-south fence in the area of the north sixteenth corner of the northeast quarter of Section 13

1941 July, Construction notes for CSAH No. 5 obtained from the County Highway Engineer's Office show that a stone was found at corner per the 1922 notes.

1948 Construction notes for CSAH No. 5 obtained from the County Highway Engineer's Office show a stone and a 3/4"x 14" steel pin at corner. The following ties are shown to corner:

- 17 feet right of PI Station 468+45.13
- nail & disc in corner fence post, west, 67.65 feet
- nail & disc in power pole, northwest, 85.6 feet
- nail & disc in telephone pole, northeast, 54.4 feet

1948 Construction plan sheets for CSAH No. 5 obtained from the County Highway Engineer's Office show a stone at corner. The following ties are shown to corner:

- 17 feet right of PI Station 468+45.13
- nail & disc in leaning fence post, west, 34.8 feet
- nail & disc in power pole, northwest, 57.15 feet
- nail & disc in telephone pole, northeast, 54.25 feet
- 2711.09 feet from the east quarter corner of Section 12

No information is given about the witness corner.

1948 November, an unsigned Certificate of Location of Government Corner obtained from the County Highway Engineer's Office states that a stone was found at corner and a 3/4" x 24" iron pipe was set over it. The following ties were taken to the corner:

- nail & disc in corner fence post, west, 67.65 feet
- nail & disc in telephone pole, southeast, 99.4 feet
- nail & disc in power pole, northwest, 85.6 feet

No information is given about the witness corner.

No Date An unsigned Certificate of Location of Government Corner obtained from the County Highway Engineer's Office contains a compilation of records in the Engineer's Office that pertain to this corner. The following is shown:

- 1888 - stone
- 1896 - stone
- 1922 - stone
- 1945 - stone
- 1948 - stone/iron pin
- 1965 - iron pin

The following ties are shown to corner:

- on the centerline of a north-south road
- nail & disc in power pole, west, 70.17 feet
- nail & disc in fence post, northeast, 48.16 feet
- top of steel fence post, southwest, 75.10 feet

No information is given about the witness corner.

1992 July, consulted with Steve Schnieder, County Highway Engineer, about monuments at government corners. Steve said that since about 1960 the County Highway Department has tried to maintain a surface monument for government corners that are in County Roads. Steve also said that the surface monuments have been set directly over the monument of record ie. stone.

Being surface monuments have been set over the monument of record at government corners, Steve said that no excavating below surface monuments is allowed.

1992 July, DNR Bureau of Engineering found a 3/4" inside diameter iron pipe with a union on top of it down 0.9 of a foot. Searched for and found record ties as shown on sketch of reference ties but were unable to get the same distances. The iron pipe was found to be:

on the centerline of north-south CSAH No. 5

in line with a fence west

2710.55 feet from the east quarter corner of Section 12

2624.26 feet from the north quarter corner of Section 13

1357 feet from a corner fence post with fences east, west and south found in the area of the north sixteenth corner of the northeast quarter of Section 13

The area of the corner and witness corner are in a fill section of about 6 feet. Did not dig for the record stone at the witness corner.

Analysis of the above information led the DNR Bureau of Engineering to conclude that the found iron pipe, which is probably over the stone that was set 5.00 chains south of the witness corner, marks the original location of the corner.