

CERTIFICATE OF LOCATION OF GOVERNMENT CORNER

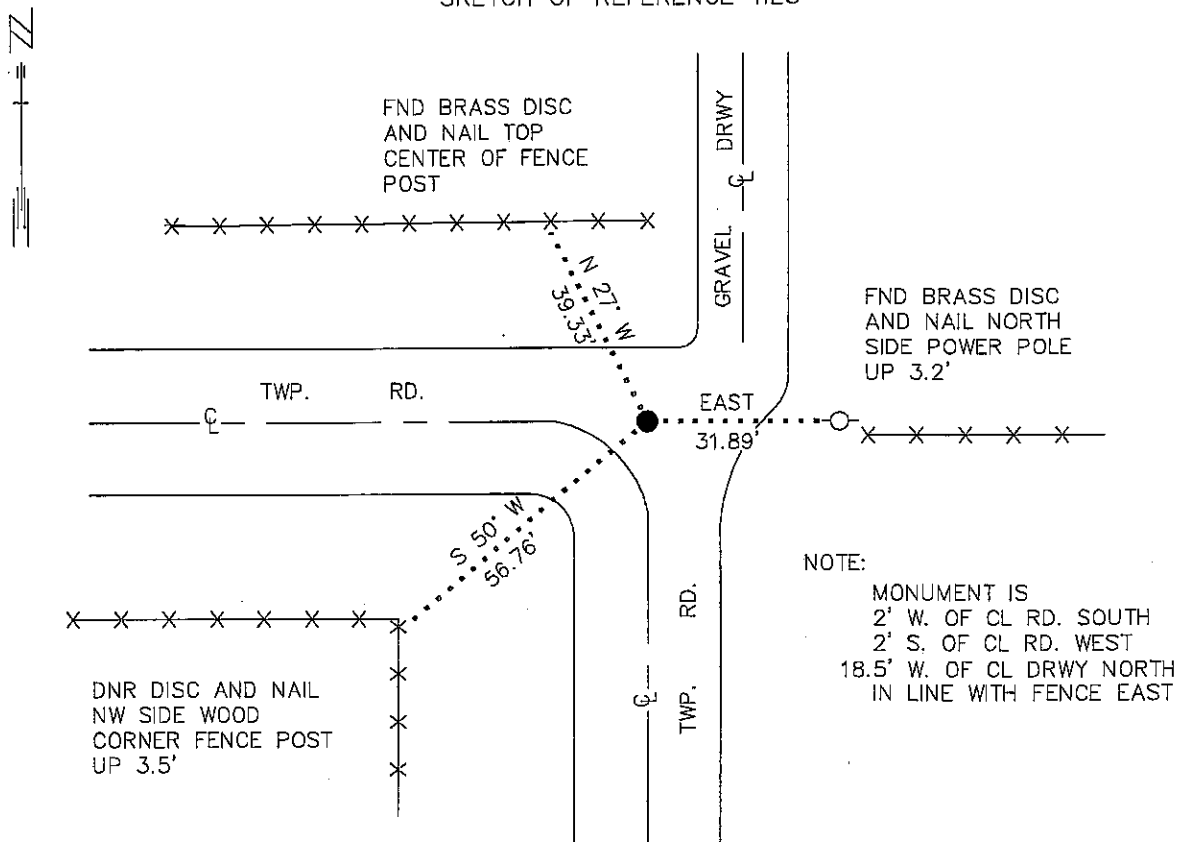
NORTHEAST Corner of Section 14, Township 101 N., Range 40 W., 5th P.M.

STATE OF MINNESOTA, County of NOBLES

At the corner location shown on the sketch:

- On 7/7/92 found a 1/2" X 24" CAPPED REBAR WITH PLASTIC RLS CAP
DATE DOWN 0.7'
- left monument as found, lowered monument, removed monument (explain)
- On 7/7/92 Placed a 3/4" X 24" REBAR WITH ALUMINUM CAP
DATE STAMPED "DNR SURVEY MARKER", DOWN 0.5'

SKETCH OF REFERENCE TIES



BEARINGS OBSERVED WITH COMPASS

Statement of evidence relative to this corner location is on back of page. 7/15/92 WMA01400

I hereby certify that this document and the data contained herein was prepared by me or under my direct supervision

Bruce W. Sheppard 7-24-92
SIGNATURE DATE

Registration No. 17003

- Land Surveyor, Professional Engineer
- County Surveyor, County Engineer

OFFICE OF THE COUNTY RECORDER
County of Nobles

I hereby certify that this document was filed in the Co. recorders office at 8:35 A. .M. on the 31st day of July A.D., 1992
County Recorder Gaye Howard
By _____, Deputy

DOCUMENT NO. 248958

Tract 101 N. 40 W. 5th P.M. Comp. 101 N. 40 W. 5th P.M.
Photo 101 N. 40 W. 5th P.M.
Map 101 N. 40 W. 5th P.M.

Northeast Corner of Section 14, Township 101 North, Range 40 West

The DNR Bureau of Engineering contacted the following for survey information:

Minnesota Secretary of State's Office
 Nobles County Recorder's Office
 Nobles County Highway Engineer's Office
 Sioux Engineering of Windom
 Madsen Land Surveying of Fairmont
 Bell Surveying Inc. of Worthington

- 1868 US General Land Office notes obtained from the Secretary of State's Office show the corner marked with a post in a mound of earth with pits per instructions.
- 1913 Surveyor's Record Book B, page 47, obtained from the County Recorder's Office contains a survey by William Saxon, County Surveyor. Survey shows a stone at corner but does not indicate if found or set. The corner is shown:
 2645.8 feet from the north quarter corner of Section 14
 2660 feet from the east quarter corner of Section 11
- 1935 Surveyor's Record Book B, page 174, obtained from the County Recorder's Office contains a survey by G. D. McMurtry, County Surveyor. Survey states that a rock and an iron pin were found at corner. The corner is shown:
 2640.9 feet from the north quarter corner of Section 13
- No Date An unsigned Certificate of Location of Government Corner obtained from the County Highway Engineer's Office contains a compilation of records in the Engineer's Office that pertain to this corner. The following is shown:
 1913 - stone
 1935 - stone/iron pin
- 1982 Field notes and work sheets obtained from Bell Surveying Inc. show that Gary D. Martin, RLS #12967, found a 3/4" solid bar down 30 inches at corner. A 1/2" diameter rebar with a plastic cap stamped RLS # 12967 was set over the found bar and the following ties were taken:
 nail & brass disc in power pole, N 83° E, 31.88 feet
 nail & brass disc in fence post, S 28° E, 85.76 feet
 nail & brass disc in fence post, N 36° W, 39.35 feet
 2645.42 feet from the north quarter corner of Section 14
- 1992 July, DNR Bureau of Engineering found a 1/2" by 24" rebar with a plastic RLS cap down 0.7 of a foot at corner. Searched for and found record ties as shown on the sketch of reference ties. The rebar was found to be:
 2655.08 feet from the east quarter corner of Section 11
 2642.35 feet from the north quarter corner of Section 13

Analysis of the above information led the DNR Bureau of Engineering to conclude that the found capped rebar which was set over a 3/4" solid bar marks the obliterated location of the corner. Discarded the capped rebar and set a DNR Survey Marker in its place.