

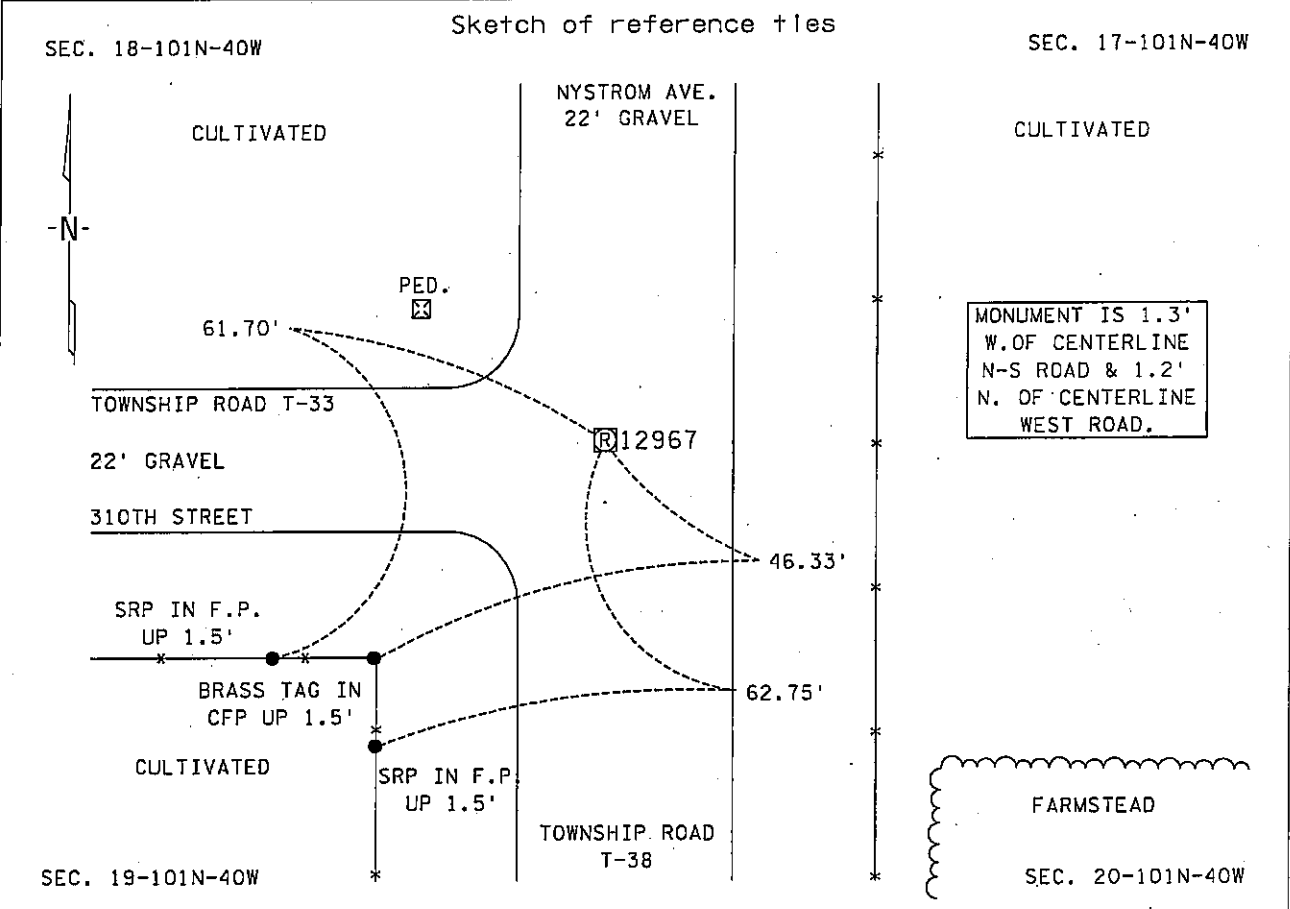
# CERTIFICATE OF LOCATION OF GOVERNMENT CORNER

NORTHEAST Corner of Section 19, Township 101N, Range 40W, 5th P.M.

STATE OF MINNESOTA, county of NOBLES

At the corner location shown on the sketch :

- On 14 DECEMBER 2000 found A REBAR WITH PLASTIC CAP STAMPED RLS # 12967,  
DOWN 0.5'  
 left monument as found,  lowered monument,  removed monument (explain)
- On \_\_\_\_\_ set \_\_\_\_\_



Statement of evidence relative to this corner location is on back page

I hereby certify that this document and the data contained herein was prepared by me or under my direct supervision.

*[Signature]*  
 Signature \_\_\_\_\_ Date 29 Nov. 05

Registration No. 22683

Land Surveyor,  Professional Engineer  
 County Surveyor,  County Engineer

OFFICE OF THE COUNTY RECORDER  
 County of NOBLES

I hereby certify that this document was filed in the Co. Recorders office at \_\_\_\_\_ .M. on the \_\_\_\_\_ day of \_\_\_\_\_ A.D., 20\_\_\_\_

County Recorder \_\_\_\_\_  
 By \_\_\_\_\_, Deputy

DOCUMENT NO. \_\_\_\_\_

Statement of Evidence:

NORTHEAST CORNER  
SECTION 19, TOWNSHIP 101 NORTH, RANGE 40 WEST, 5th P.M.  
NOBLES COUNTY, MINNESOTA

- 14 Oct. 1868 - George G. Howe, U.S. Deputy Surveyor, his notes read: "North between Sec.s 19 & 20, Var. 11° 30' E." @ 80.00 chs. "Set post in mound with pits for corner to Sec's 17, 18, 19 & 20", no ties.
- 30 Mar. 1912 - Nobles County Recorder's Office, Surveyor's Record, Volume B, Page 18, by William A. Saxon, County Surveyor, for a survey of Section 20-101-40, where he set a 1 1/4" X 30" long, shaft at the Northwest Corner with a distance south of 2651' to the corresponding quarter section corner.
- 1 Dec. 1982 \* - Martin Land Surveying of Worthington, Minnesota, Job No. 82065, a survey signed by Gary D. Martin, RLS # 12967, notes for part of Section 17-101-40, states that he found old hub above a 1 1/4" shaft, down 2.1' below grade at road centerlines north, south & west, set 1/2" rebar with cap above shaft. Set Ties: Brass tag in FP 41.81' SE; Brass tag in CFP 46.25' SW; Brass tag in 2nd Brace Pole 62.82' SW; Brass tag in Riser Pole 45.57' NW.
- 14 Dec. 2000 - Minnesota Department of Transportation, survey crew working on TH 60, SP 5305-51, found a rebar with plastic cap stamped, RLS # 12967, down 0.5' for the Northeast Corner of Sec. 19-101-40. Returning in the first week of Dec. 2003 to perform a GPS survey where a distance east of 2640.13' was computed to the corresponding quarter section corner.

\* Gary D. Martin, RLS # 12967, owned and operated Martin Land Surveying, Inc., of Worthington, Minnesota and sold the business in 1987. Mr. Martin is now practicing in Holly Springs, Georgia.

The written evidence is conclusive and continuous back to the 1912 survey by W.A. Saxon and this is a reasonable location as to the corner, therefore I accept this as the corner. Additional information regarding the preparation of this certificate can be obtained by contacting: Survey Section, Minnesota Department of Transportation, 501 South Victory Drive, Mankato, MN 56001.