

CERTIFICATE OF LOCATION OF GOVERNMENT CORNER

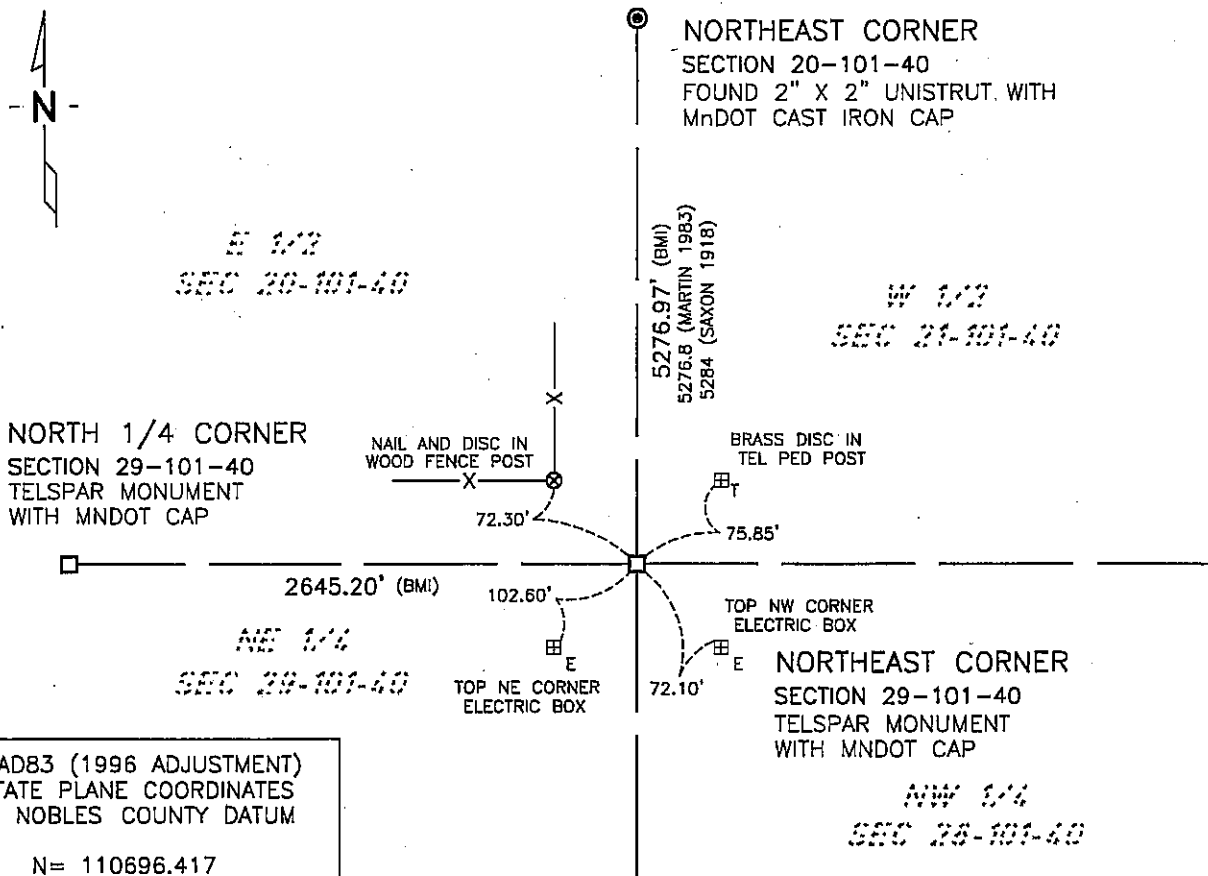
NORTHEAST Corner of Section 29, Township 101, Range 40, 5th P.M.

STATE OF MINNESOTA, County of NOBLES

At the corner location shown on the sketch:

- On 11/23/05 found a 1 1/2" Iron Shaft 8" below the surface of bituminous road at centerline of T.H. No. 59 and County Road No. 4
 - left monument as found, lowered monument, removed monument (explain)
- On 4/26/06 placed a 2" X 2" X 30" Telspar Monument with MnDot Cap in place of said 1 1/2" Iron Shaft

SKETCH OF REFERENCE TIES



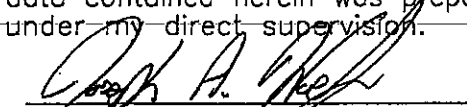
NAD83 (1996 ADJUSTMENT)
STATE PLANE COORDINATES
NOBLES COUNTY DATUM

N= 110696.417
E= 578485.093

NOBLES CO. PG. 43-45
I:\MnDT\M3237611\CAD\CERTS\NE2910140.DWG

Statement of evidence relative to this corner location is on back of page.

I hereby certify that this document and the data contained herein was prepared by me or under my direct supervision.


JOSEPH A. HAEFNER

5-16-2006
DATE

Registration No. 43909

- Land surveyor, Professional Engineer
- County Surveyor, County Engineer

OFFICE OF THE COUNTY RECORDER

County of _____

I hereby certify that this document was filed in the Co. Recorders office at ____M. on the _____ day of _____ A.D., 20____

County Recorder _____

By _____, Deputy

DOCUMENT NO. _____

Statement of Evidence:

NORTHEAST CORNER
SECTION 29, TOWNSHIP 101 NORTH, RANGE 40 WEST
5th PRINCIPAL MERIDIAN, MINNESOTA

- 13 Oct. 1868 -George G. Howe, U.S. Deputy Surveyor, "North between Sections 28 & 29" @ 80.00 chs. "Set post in mound with pits for Corner to Section's 20, 21, 28 & 29", no ties.
- 20 June 1918 -Nobles County Recorder's Office, Surveyor's Record, Volume B, Page 109, by William A. Saxon, County Surveyor, for a survey of Section 21-101-40, states that he set a stone at the Southwest Corner.
- 1941 -Minnesota Department of Transportation Right-of-Way Map No. 31-78 show the section corner at the intersection of roads. There is no monument shown.
- 1941-1942 -Information obtained from the Minnesota Department of Transportation states that grading, gravel, and bituminous surfacing took place along Trunk Highway No. 59.
- 1983 -Martin Land Surveying survey notes show a distance of 5276.8 feet between the Northeast Corner of and the Southeast Corner of Section 20. There is no mention of any kind of monumentation.
- 23 Nov. 2005 -Bolton & Menk, Inc. survey crew found a 1 1/2" Iron Shaft 8" below the surface of bituminous road in the centerline of Trunk Highway No. 59 and County Road No. 4
- 1 Dec. 2005 -Bolton & Menk, Inc. survey crew excavated 2.5 feet below the above referenced Iron Shaft and probed for stone and found nothing. The Iron shaft was placed back in the exact location it was found.
- 3 Dec. 2005 -Bolton & Menk, Inc. assume the 1918 Stone Monument was destroyed during the 1941-1942 construction work. Bolton & Menk, Inc. determined the above referenced 1 1/2" Iron Shaft is the best evidence of the location of the corner.
- 26 April 2006 -Bolton & Menk, Inc. survey crew set a 2" X 2" X 30" Telspar Monument with MnDot Cap in place of the above referenced Iron Shaft.

The evidence is not conclusive as to the true corner location, however the occupational and collateral evidence suggest that this is a reasonable location as to the corner. Additional information regarding the preparation of this certificate can be obtained by contacting: Bolton & Menk, Inc., 219 North Main Street, Fairmont, MN 56031.