

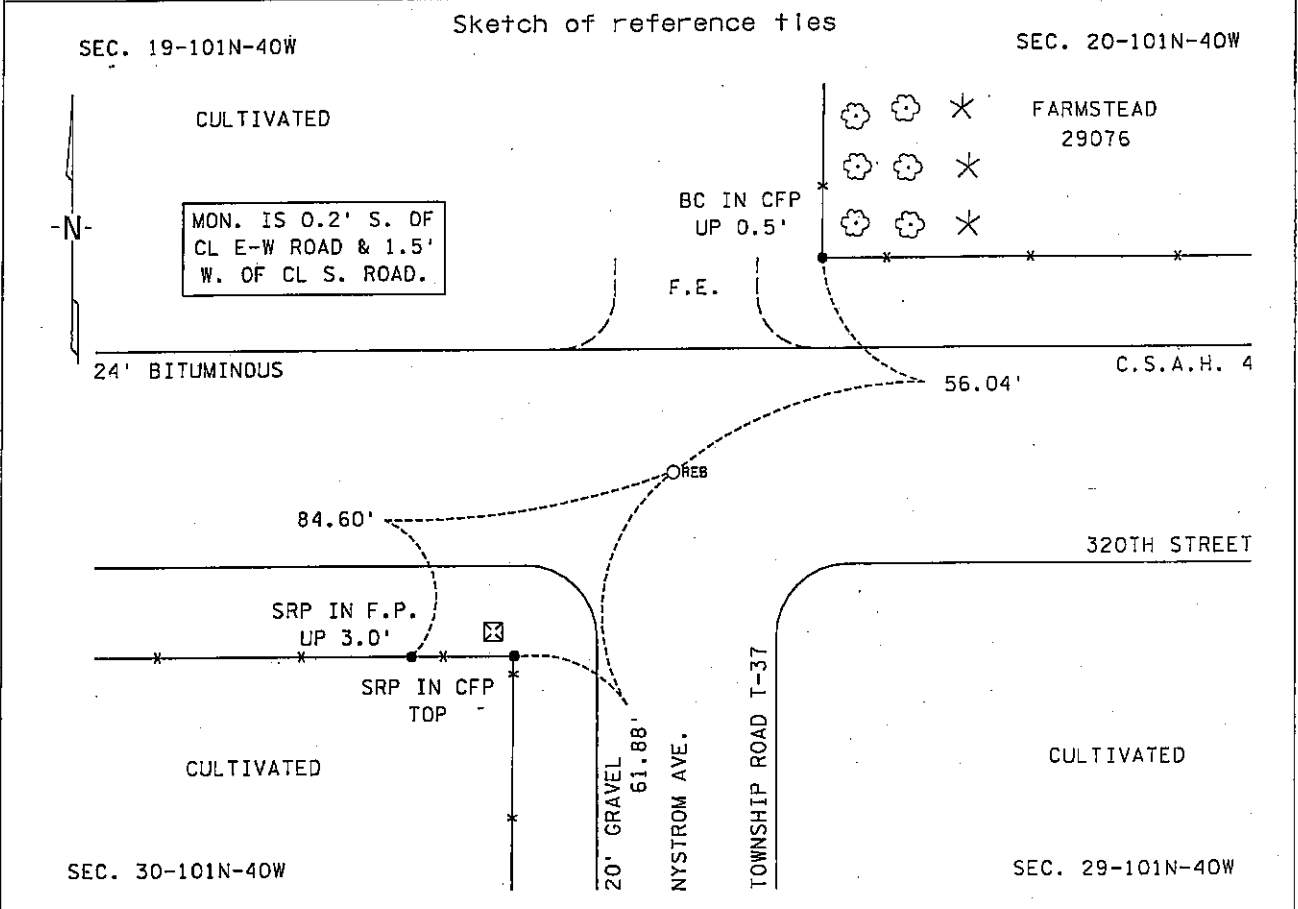
# CERTIFICATE OF LOCATION OF GOVERNMENT CORNER

NORTHEAST Corner of Section 30, Township 101N, Range 40W, 5th P.M.

STATE OF MINNESOTA, County of NOBLES

At the corner location shown on the sketch :

- On 8 JANUARY 2001 found A 5/8" REBAR, DOWN 0.15'
- left monument as found,  lowered monument,  removed monument (explain)
- On \_\_\_\_\_ set \_\_\_\_\_



Statement of evidence relative to this corner location is on back page

I hereby certify that this document and the data contained herein was prepared by me or under my direct supervision.

*[Signature]* 29 Nov. 05  
 Signature Date

Registration No. 22683  
 Land Surveyor,  Professional Engineer  
 County Surveyor,  County Engineer

OFFICE OF THE COUNTY RECORDER

County of NOBLES

I hereby certify that this document was filed in the Co. Recorders office at \_\_\_\_\_ .M. on the day of \_\_\_\_\_ A.D., 20

County Recorder \_\_\_\_\_  
 By \_\_\_\_\_, Deputy

DOCUMENT NO. \_\_\_\_\_

Statement of Evidence:

NORTHEAST CORNER  
SECTION 30, TOWNSHIP 101 NORTH, RANGE 40 WEST, 5th P.M.  
NOBLES COUNTY, MINNESOTA

- 14 Oct. 1868 - George G. Howe, U.S. Deputy Surveyor, his notes read: "North between Sec.s 29 & 30, Var. 11° 20' E." @ 80.00 chs. "Set post in mound with pits for corner to Sec's 19, 20, 29 & 30", no ties.
- 30 June 1917 - Chicago, St. Paul, Minneapolis & Omaha Railway Company, Right of Way and Track Map, St. Paul to Sioux City, shows the north line of the NE ¼ of Sec. 30-101-40 at station 3384+04 which is also the highway x-ing.
- 15 Nov. 1993 - Moseng & Zieske Land Surveying, Inc., of Windom, Minnesota, Survey No. N9302S, by Lyle E. Moseng, RLS # 11943, for a survey of Part of the East Half of Section 30-101-40, shows a found ½" iron pin in place at the Northeast Corner with a distance west of 2633.00' and a distance south of 2648.80' to corresponding section corners.
- 8 Jan. 2001 - Minnesota Department of Transportation, survey crew working on TH 60, SP 5305-51, found a 5/8" rebar, down 0.15' for the Northeast Corner of Sec. 30-101-40. Returning in the first week of Dec. 2003 to perform a GPS survey where a distance a distance west of 2633.02' and a distance south of 2646.41' were computed to corresponding quarter section corners.

The written evidence is sparse and does not give a clear indication as to the true corner location, however the distance measurements are within reason of the 1993 survey and the occupational and collateral evidence suggests that this is a reasonable location as to the corner. Additional information regarding the preparation of this certificate can be obtained by contacting: Survey Section, Minnesota Department of Transportation, 501 South Victory Drive, Mankato, MN 56001.