

CERTIFICATE OF LOCATION OF GOVERNMENT CORNER

NORTHEAST Corner of Section 31, Township 101N, Range 40W, 5TH P.M.

STATE OF MINNESOTA, County of NOBLES

At the corner location shown on the sketch :

On 21 JUNE 2004 found A STONE WITH WOOD STAKES DOWN 3.5'

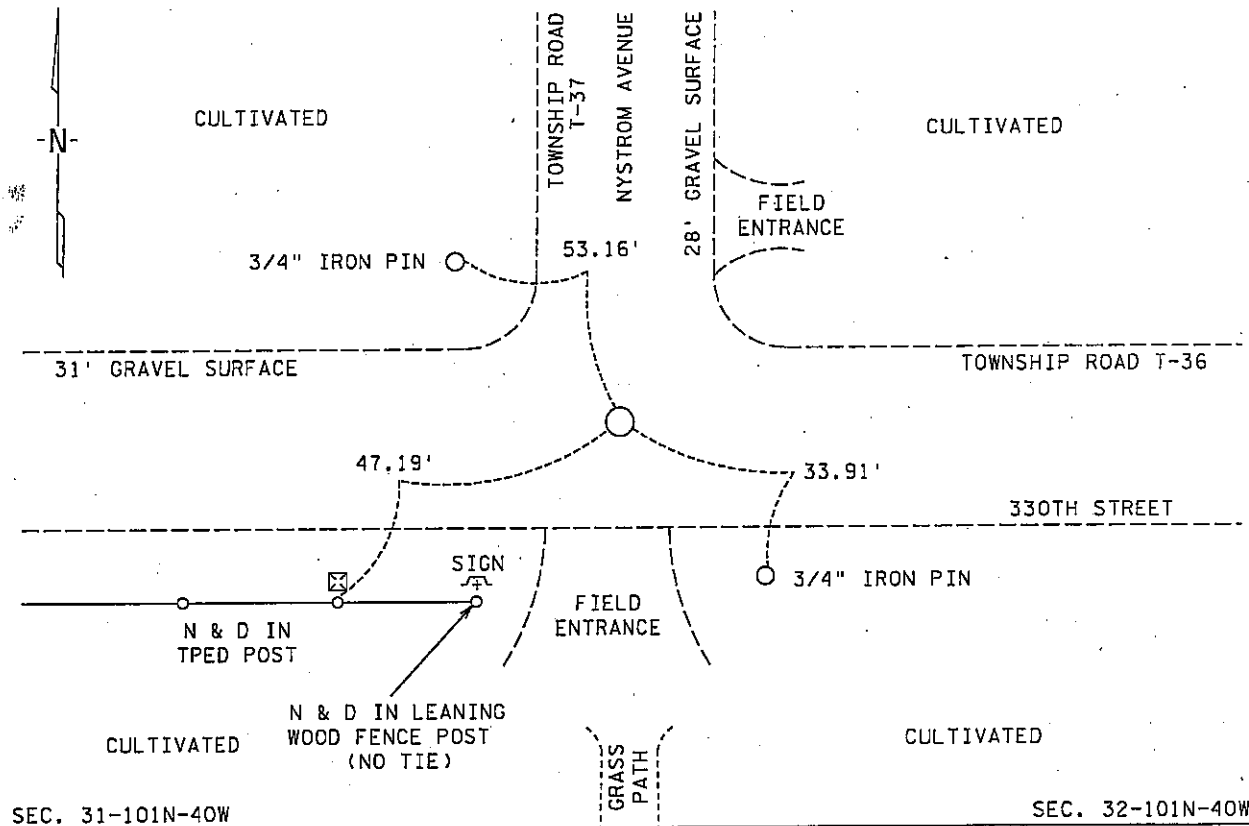
left monument as found, lowered monument, removed monument (explain)

On 27 APRIL 2005 set A 2" x 2" TELSPAR WITH Mn/DOT ALUMINUM CAP STAMPED "NE COR 31-101-40" DOWN 1.0'

SEC. 30-101N-40W

Sketch of reference ties

SEC. 29-101N-40W



Statement of evidence relative to this corner location is on back page

I hereby certify that this document and the data contained herein was prepared by me or under my direct supervision.

[Signature] 29 June 05
 Signature Date

Registration No. 22683

Land Surveyor, Professional Engineer
 County Surveyor, County Engineer

OFFICE OF THE COUNTY RECORDER
 County of NOBLES

I hereby certify that this document was filed in the Co. Recorders office at _____ .M. on the day of _____ A.D., 20

County Recorder _____
 By _____, Deputy

DOCUMENT NO. _____

Statement of Evidence:

NORTHEAST CORNER
SECTION 31, TOWNSHIP 101 NORTH, RANGE 40 WEST, 5th P.M.
NOBLES COUNTY, MINNESOTA

- 14 Oct. 1868 - George G. Howe, U.S. Deputy Surveyor, his notes read: "North between Sec.s 31 & 32, Var. 11° 30' E." @ 80.00 chs. "Set post in mound with pits for corner to sec's 29, 30, 31 & 32", no ties.
- 25 June 1917 - Nobles County Recorder's Office, Surveyor's Record, Volume B, Page 94, by William A. Saxon, County Surveyor, for a survey of Section 31-101-40, states that he set a stone at the Northeast Corner with a distance south of 2652' and a distance west of 2645' to corresponding quarter section corners.
- 15 Nov. 1993 - Moseng & Zieske Land Surveying of Windom, Minnesota, Survey No. S9302S, by Lyle E. Moseng, RLS # 11943, for a survey of part of the East Half of Section 30-101-40, shows a 5/8" rerod with cap was set at the Southeast Corner with a distance north of 2648.75' and a distance west of 2638.54' to corresponding quarter section corners.
- 13 Dec. 2000 - Minnesota Department of Transportation, survey crew working on TH 60, SP 5305-51, found a 5/8" rerod with plastic cap stamped RLS # 11943, down 0.2' for the Northeast Corner of Sec. 31-101-40. Returning in the first week of Dec. 2003 to perform a GPS survey of the project. After analysis of the section subdivision and a history of old stones being used for section corners in this particular township it was determined that an excavation search was necessary.
- 21 June 2004 - Minnesota Department of Transportation, survey crew working on TH 60, SP 5305-51/55, excavated Township Road with backhoe. At a depth of 3.5 feet a stone was found including remnants of wood stakes. This stone is accepted as the one set by William A. Saxon on 25 June 1917. Returning on 27 April 2005 a 2" X 2" unistrut with Mn/DOT aluminum cap stamped "NE COR. 31-101-40" was set above the stone. GPS coordinates were established for this position and a distance north of 2651.30' and a distance west of 2644.53' and a distance south of 2649.53' were computed to corresponding quarter section corners.

The found stone monument corresponds with the written evidence from 1917 and the measured distances confirm the location where the occupational and collateral evidence supports that this is the true corner location. The previously noted 5/8" rerod was located 3.8 feet northwesterly of the stone. Additional information regarding the preparation of this certificate can be obtained by contacting: Survey Section, Minnesota Department of Transportation, 501 South Victory Drive, Mankato, MN 56001.