

CERTIFICATE OF LOCATION OF GOVERNMENT CORNER

NORTHEAST Corner of Section 4, Township 101N, Range 40W, 5th P.M.

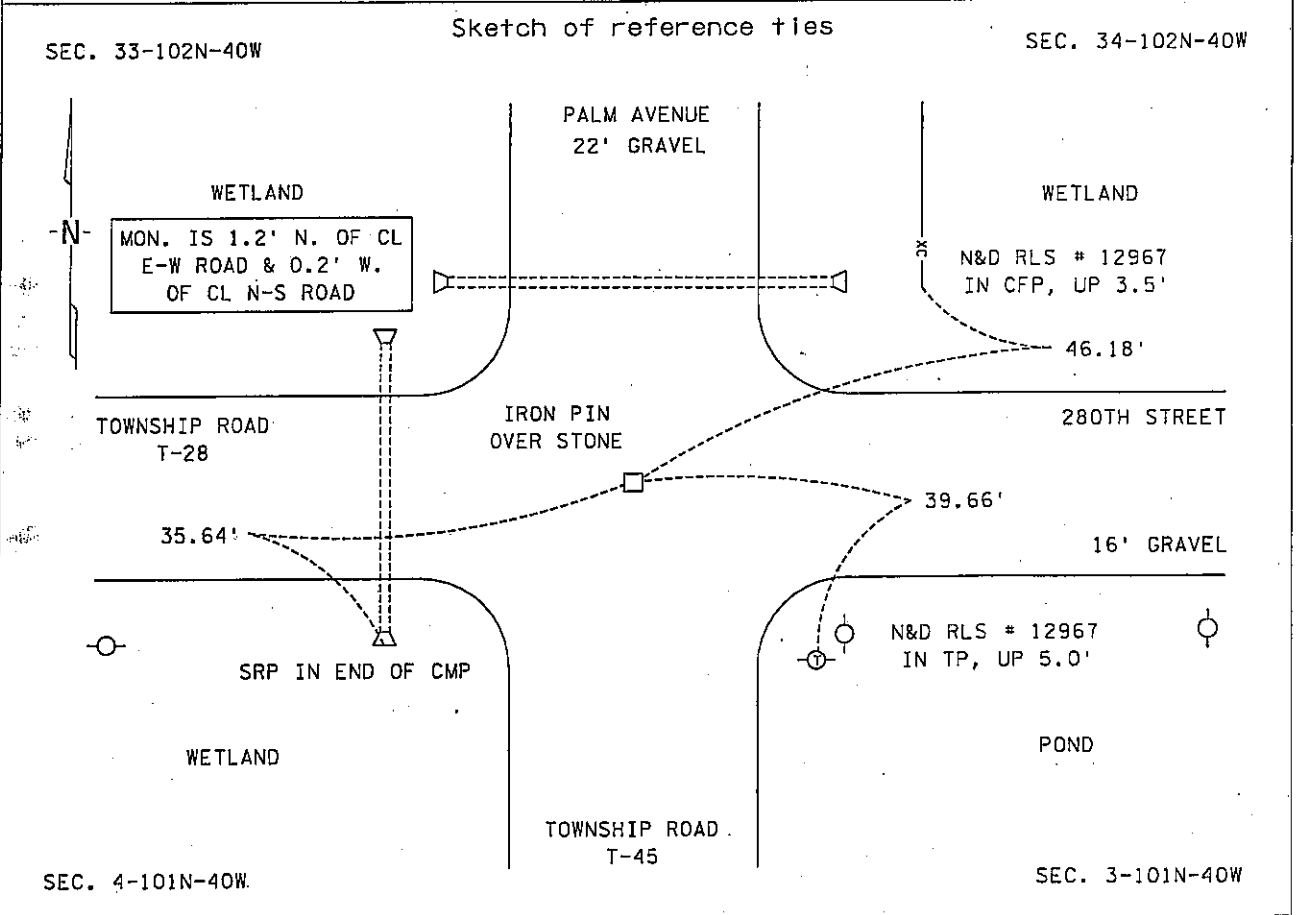
STATE OF MINNESOTA, County of NOBLES

At the corner location shown on the sketch :

On 17 JANUARY 2001 found A 6" X 7" STONE WITH "+" ON TOP, DOWN 2.6'

left monument as found, lowered monument, removed monument (explain)

On 18 JANUARY 2001 set A 3/4" X 24" IRON PIN, DOWN 0.2'



Statement of evidence relative to this corner location is on back page

I hereby certify that this document and the data contained herein was prepared by me or under my direct supervision.

[Signature] 29 Nov. 05
 Signature Date

Registration No. 22683

- Land Surveyor Professional Engineer
 County Surveyor, County Engineer

OFFICE OF THE COUNTY RECORDER

County of NOBLES

I hereby certify that this document was filed in the Co. Recorders office at _____ .M. on the day of _____ A.D., 20

County Recorder _____
 By _____, Deputy

DOCUMENT NO. _____

Statement of Evidence:

NORTHEAST CORNER
SECTION 4, TOWNSHIP 101 NORTH, RANGE 40 WEST, 5th P.M.
NOBLES COUNTY, MINNESOTA

- 12 July 1867 - Thomas B. Walker, U.S. Deputy Surveyor, his notes read: "East Random Line Between Towns 101 & 102, Range 40." "I set temporary corners along line & at intersect town line 15.50 chs. north of corner." "Upon examination; I find my instrument grossly out of repair & adjustment." "Declination Bar badly bent by shutting the box cover on it, telescope axis askew as also telescope sights." "As my line cannot be straight, I now sure west Random line & at a point 130 lks. north of Town Corner." "My correction will be 21.23 lks. south per mile, the excess remaining at the west end." "S 89° 39' E between 4 & 33, Var. 11° 45'." "After the half mile mark there is a correction to the running line. "Thence N. 87° 39' E. Between 4 & 33, Var. 11° 30'." @ 80.00 chs. "Point for Cor. Secs 3, 4, 33 & 34, for which Witness Cor. 4 chs. East", no ties.
- 22 Apr. 1892 - Nobles County Recorder's Office, Surveyor's Record, Volume A-2, Page 50, by Milton S. Smith, County Surveyor, for a survey for the Towns of Bigelow and Worthington, states that he found original W.C., high mound, pits, original stake in mound and in good preservation for the Northeast Corner of Sec. 4-101-40 with a distance west of 2628' and a distance east of 2707' to corresponding quarter section corners..
- 28 Oct. 1893 - Nobles County Recorder's Office, Surveyor's Record, Volume A-2, Page 132, by Milton S. Smith, County Surveyor, for a survey of Section 3-101-40, states that he found a stone at the corner and the W.C. 4 chs. east of the Northwest Corner with a distance south of 2939.7' to the corresponding quarter section corner.
- 31 Oct. 1893 - Nobles County Recorder's Office, Surveyor's Record, Volume A-2, Page 134, by Milton S. Smith, County Surveyor, for a survey of Section 4-101-40, states that he found a stone at the corner and the W.C. 264 ft. east of the Northwest Corner with a distance east of 2628' and distance south of 2939.7' to corresponding quarter section corners.
- 20 July 1914 - Nobles County Recorder's Office, Surveyor's Record, Volume B, Page 57, by William A. Saxon, County Surveyor, for a survey of Sec. 34-102-40, shows an 'Old Stone' at the Southwest Corner with a distance east of 2644' and a distance south of 2656.5' to corresponding quarter section corners.
- 15 Mar. 1922 - Nobles County Recorder's Office, Surveyor's Record, Volume B, Page 132, by Harvey W. Jones, RLS # 1395, Co. Surveyor, for a survey of Sec. 34-102-40, shows a stone at the SW Corner.
- 19 Oct. 1978 * - Martin Land Surveying of Worthington, Minnesota, Job No. 78070, a survey signed by Gary D. Martin, RLS # 12967, for part of Section 33-102-40, shows a found stone with chiseled 'X' and set a 3/8" rebar above the stone for the Southeast Corner. Ties include: CFP 46.37' NE; Tel. Riser Post 39.22' SE; CFP 40.40' SE.
- 9 Apr. 1986 * - Martin Land Surveying of Worthington, Minnesota, Job No. 86012, a survey signed by Gary D. Martin, RLS # 12967, for part of Section 33-102-40, shows a note stating that a 1/2" rebar was reset for the Southeast Corner and from the 1978 ties.
- 9 Apr. 1987 - Nobles County Recorder's Office, Document No. 230010, a Resolution by the Town Board of Worthington Township declares a public right of way easement over the south 33.00 feet of Section 33-102-40 where the corner position falls within feet of centerline of the declared road.

NORTHEAST CORNER
SECTION 4, TOWNSHIP 101 NORTH, RANGE 40 WEST, 5th P.M.
NOBLES COUNTY, MINNESOTA
Continued

17 Jan. 2001

- Minnesota Department of Transportation, survey crew working on TH 60, SP 5305-51, shows a found 6" X 7" stone with "+" on top, down 2.6' for the Northeast Corner of Sec. 4-101-40 and returned the next day to set a 3/4" X 24" iron pin over the stone, down 0.2'. Returning in the first week of Dec. 2003 to perform a GPS survey where a distance west of 2620.89' was computed to the corresponding quarter section corner.

* Gary D. Martin, RLS # 12967, owned and operated Martin Land Surveying, Inc., in Worthington, Minnesota and sold the business in 1987, Mr. Martin is currently practicing in Holly Springs, Georgia.

The written evidence does not tie the original stake to the stone, however the stone is the best evidence of the true corner location. Additional information regarding the preparation of this certificate can be obtained by contacting: Survey Section, Minnesota Department of Transportation, 501 South Victory Drive, Mankato, MN 56001.

