

CERTIFICATE OF LOCATION OF GOVERNMENT CORNER

NORTHEAST Corner of Section 5, Township 101N, Range 40W, 5th P.M.

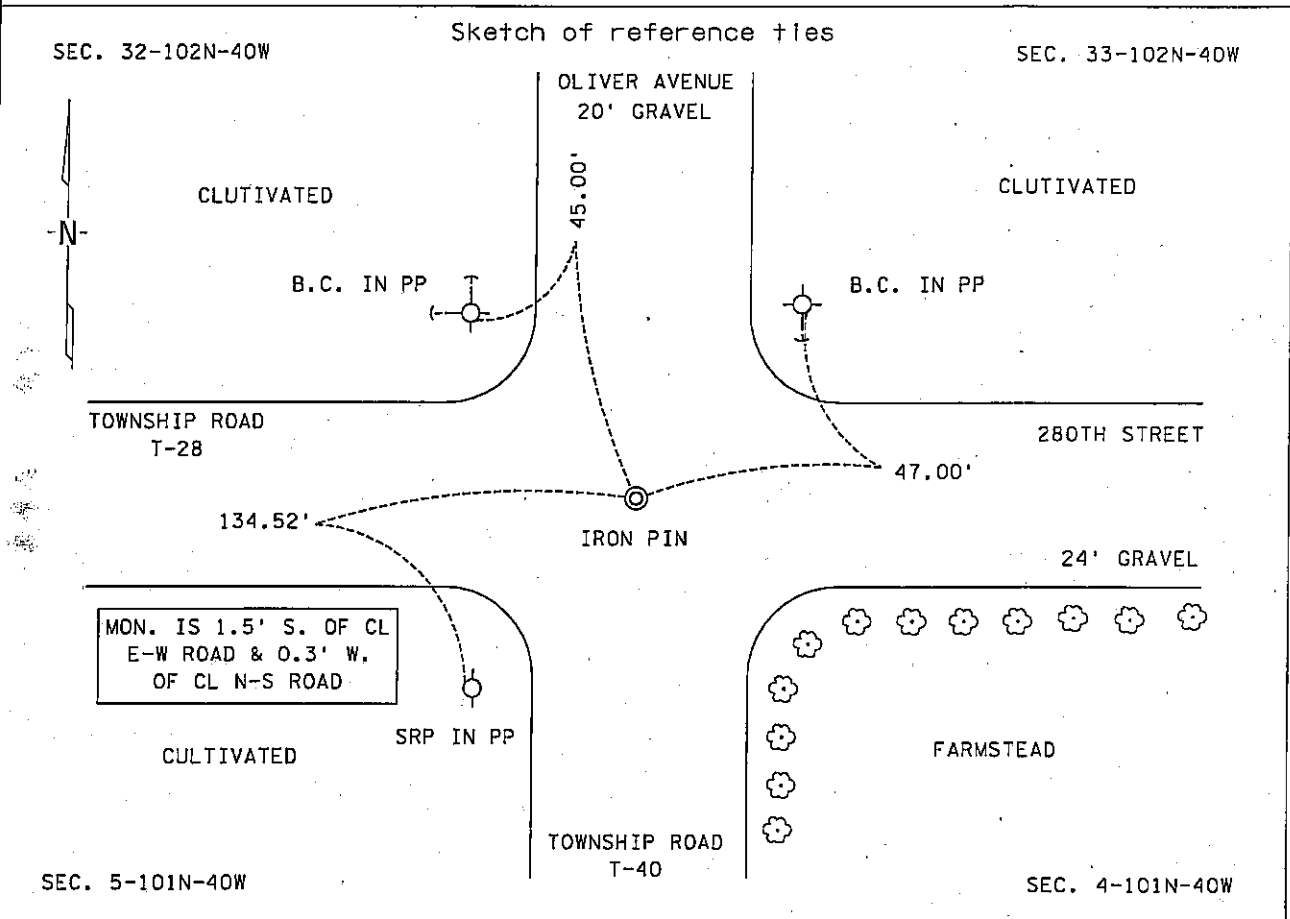
STATE OF MINNESOTA, County of NOBLES

At the corner location shown on the sketch :

On 29 SEPT. 2000 found A 1/2" X 1.5' IRON PIN, DOWN 1.0'

left monument as found, lowered monument, removed monument (explain)

On 29 SEPT. 2000 set A 3/4" X 1' IRON PIN, DOWN 0.3'



Statement of evidence relative to this corner location is on back page

I hereby certify that this document and the data contained herein was prepared by me or under my direct supervision.

[Handwritten Signature]
 Signature _____ Date 29 Nov. 05

Registration No. 22683
 Land Surveyor, Professional Engineer
 County Surveyor, County Engineer

OFFICE OF THE COUNTY RECORDER
 County of NOBLES

I hereby certify that this document was filed in the Co. Recorders office at _____ .M. on the day of _____ A.D., 20

County Recorder _____
 By _____, Deputy

DOCUMENT NO. _____

Statement of Evidence:

NORTHEAST CORNER
SECTION 5, TOWNSHIP 101 NORTH, RANGE 40 WEST, 5th P.M.
NOBLES COUNTY, MINNESOTA

- 12 July 1867 - Thomas B. Walker, U.S. Deputy Surveyor, his notes read: "East Random Line Between Towns 101 & 102, Range 40." "I set temporary corners along line & at intersect town line 15.50 chs. north of corner." "Upon examination; I find my instrument grossly out of repair & adjustment." "Declination Bar badly bent by shutting the box cover on it, telescope axis askew as also telescope sights." "As my line cannot be straight, I now sure west Random line & at a point 130 lks. north of Town Corner." "S 89° 54' E between Sec.s 5 & 32, Var. 11°." After the half-mile mark there is a correction to the running notes. "Thence S. 89° 51' E. Between Sec's. 5 & 32, Var. 11° 10'." @ 80.05 chs. "Cor. Secs 4, 5, 32 & 33, for which Post in mound", no ties.
- 22 Apr. 1892 - Nobles County Recorder's Office, Surveyor's Record, Volume A-2, Page 50, by Milton S. Smith, County Surveyor, for a survey for the Towns of Bigelow and Worthington, states that the original corner for the Northwest Corner of Section 4-101-40 is 'gone'.
- 31 Oct. 1893 - Nobles County Recorder's Office, Surveyor's Record, Volume A-2, Page 134, by Milton S. Smith, County Surveyor, for a survey of Section 4-101-0, shows the Northwest Corner as 'gone'.
- 13 June 1896 - Nobles County Recorder's Office, Surveyor's Record, Volume A-2, Page 224, by Milton S. Smith, County Surveyor, for a survey of Section 4-101-0, states that he set a stone at the Northwest Corner with a distance east of 2668.8' to the corresponding quarter section corner.
- 30 June 1917 - Chicago, St. Paul, Minneapolis & Omaha Railway Company, Right of Way and Track Map, St. Paul to Sioux City, shows the north line of the NW ¼ of Sec. 4-101-40 at station 3150+23, which is also called the Highway x-ing.
- Circa 1931 - Nobles County Highway Department, Bigelow Twp. Corner Book, states that a stone was in place at the Northwest Corner of Section 4-101-40.
- Circa 1936 - Nobles County Highway Department, Bigelow Twp. Corner Book, states that a stone was in place at the Northwest Corner of Section 4-101-40.
- Circa 1963 - Nobles County Highway Department, Bigelow Twp. Corner Book, states that a stone was in place at the Northwest Corner of Section 4-101-40, and that a wood stake was placed.
- 9 Apr. 1987 - Nobles County Recorder's Office, Document No. 230010, a Resolution by the Town Board of Worthington Township declares a public right of way easement over the south 33.00 feet of Section 33-102-40 where the corner position falls within feet of centerline of the declared road.
- 29 Sept. 2000 - Minnesota Department of Transportation, survey crew working on TH 60, SP 5305-51, found a ½" X 1.5' iron pin, down 1' for the Northeast Corner of Sec. 5-101-40 and lowered the pin and set a ¼" X 1' iron pin, down 0.3' over the previous iron pin. Returning in the first week of Dec. 2003 to perform a GPS survey where a distance east of 2670.56' was computed to the corresponding quarter section corner.

There is a lot of written evidence but it is not conclusive as to the true corner location, the measurement data from 1896 and 2003 are close considering the time span where the occupational and collateral evidence also support that this is a reasonable location as to the corner. Additional information regarding the preparation of this certificate can be obtained by contacting: Survey Section, Minnesota Department of Transportation, 501 South Victory Drive, Mankato, MN 56001.