

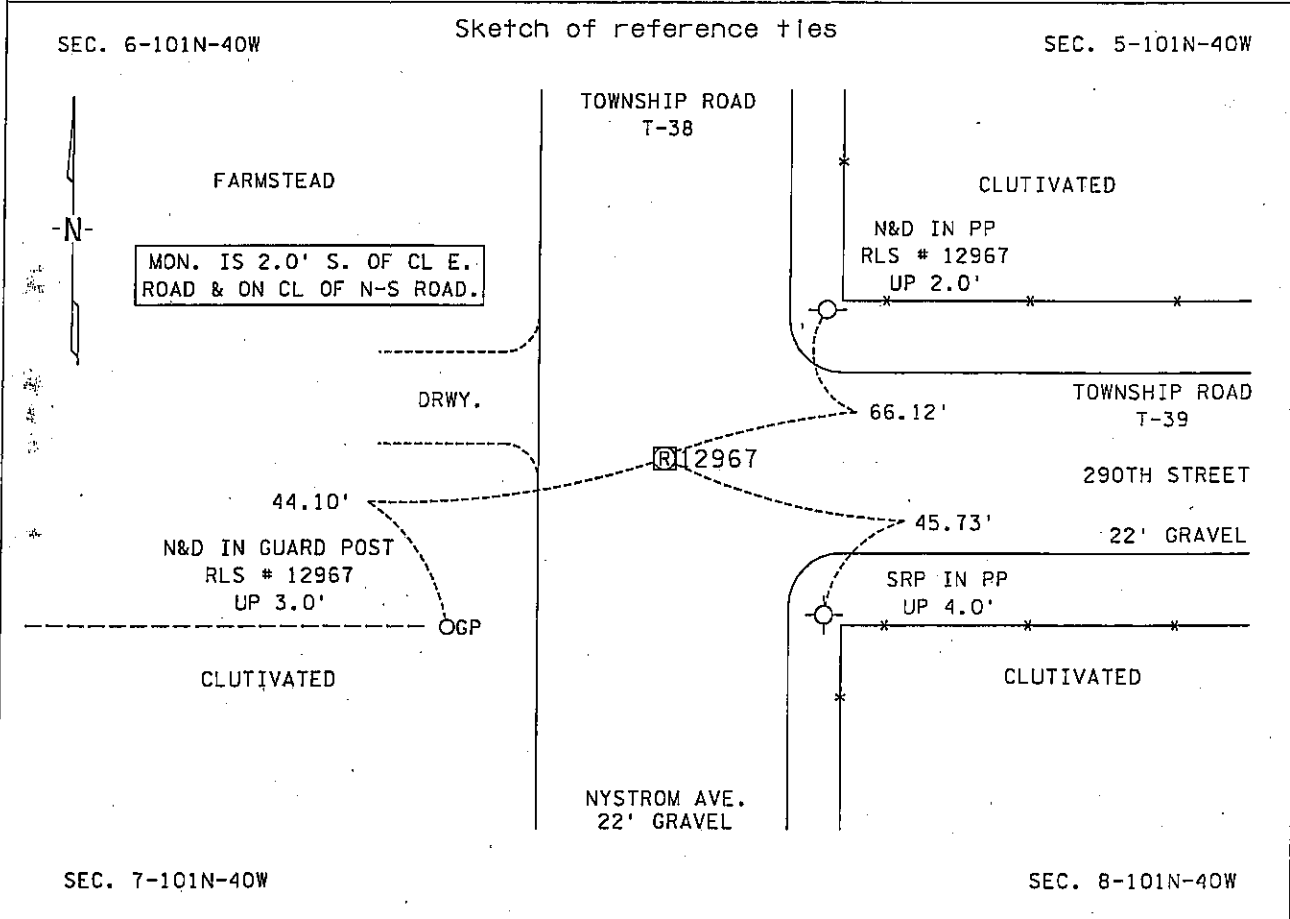
CERTIFICATE OF LOCATION OF GOVERNMENT CORNER

NORTHEAST Corner of Section 7, Township 101N, Range 40W, 5th P.M.

STATE OF MINNESOTA, County of NOBLES

At the corner location shown on the sketch :

- On 21 JULY 2000 found A REBAR WITH PLASTIC CAP STAMPED RLS # 12967,
DOWN 0.6'
 left monument as found, lowered monument, removed monument (explain)
- On _____ set _____



Statement of evidence relative to this corner location is on back page

I hereby certify that this document and the data contained herein was prepared by me or under my direct supervision.

[Signature] _____
 Signature Date 29 Nov. 05

Registration No. 22683

Land Surveyor, Professional Engineer
 County Surveyor, County Engineer

OFFICE OF THE COUNTY RECORDER
 County of NOBLES

I hereby certify that this document was filed in the Co. Recorders office at _____ .M. on the _____ day of _____ A.D., 20____

County Recorder _____
 By _____, Deputy

DOCUMENT NO. _____

Statement of Evidence:

NORTHEAST CORNER
SECTION 7, TOWNSHIP 101 NORTH, RANGE 40 WEST, 5th P.M.
NOBLES COUNTY, MINNESOTA

- 15 Oct. 1868 - George G. Howe, U.S. Deputy Surveyor, his notes read: "North between Sec.s 7 & 8, Var. 11° 20' E." @ 80.00 chs. "Set Post in mound with pits for corner to Sec's 5, 6, 7 & 8", no ties.
- 23 June 1982 * - Martin Land Surveying, Inc., of Worthington, Minnesota, Job No. 82020, a survey by Gary D. Martin, RLS # 12967, notes for a part of Section 7-101-40, state that he found a 1" square top iron bolt 14" long, standing on end, he set a rebar above the bolt. Ties include: N&D in PP 66.09' NE; N&D in PP 46.08' SE; N&D in PP 44.10' SE; N&D in T-Ped Post 41.26' NW.
- Circa 1987 ** - Bell Surveying, Inc., of Worthington, Minnesota, Job No. 87042, a survey signed by Timothy P. Bell, RLS # 16093, for a part of Section 5-101-40, shows a found rebar capped RLS # 12967 at the Southwest Corner.
- 21 July 2000 - Minnesota Department of Transportation survey crew working on TH 60, SP 8827-10 & 5305-51 found a rebar with a plastic cap stamped RLS # 12967, down 0.6' and on centerline of Township Road T-38 and 2' south of Township Road T-39 for the Northeast Corner of Section 7-101-40. Returning in the first week of Dec. 2003 to perform a GPS survey where a distance east of 2646.42' and a distance south of 2656.15' was computed to the corresponding quarter section corners. Ties include: Disk Stamped RLS 12967 in PP 66.12' NE; SRP in PP 45.73' SE; Disk Stamped RLS 12967 in Anchor Pole 44.10' SW.

* Gary D. Martin, RLS # 12967, owned and operated Martin Land Surveying, Inc., of Worthington, Minnesota and sold the business in 1987. Mr. Martin is now practicing in Holly Springs, Georgia.

** Timothy P. Bell, RLS # 16093, owned and operated Bell Surveying, Inc., of Worthington, Minnesota, and went out of business some time around 1990. Mr. Bell's Registration Number is listed in the Minnesota Society of Professional Surveyors Roster in the Deceased or Not Practicing category.

The written evidence shows a large gap of unrecorded and unavailable information about this corner location between 1868 and 1982, however the occupational and collateral evidence suggest that this is a reasonable location as to the corner. Additional information regarding the preparation of this certificate can be obtained by contacting: Survey Section, Minnesota Department of Transportation, 501 South Victory Drive, Mankato, MN 56001.