

CERTIFICATE OF LOCATION OF GOVERNMENT CORNER

NORTHEAST Corner of Section 8, Township 101N, Range 40W, 5th P.M.

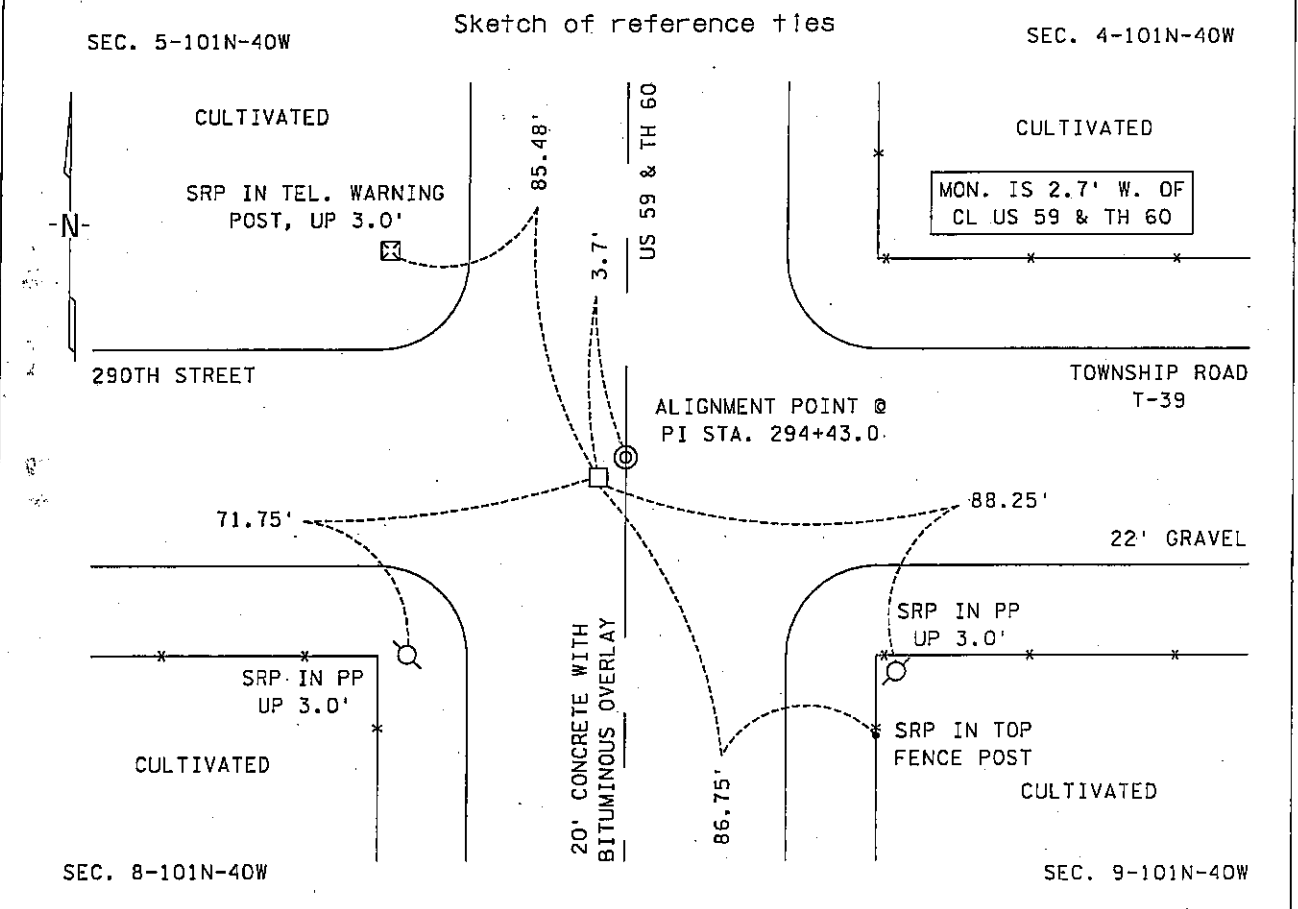
STATE OF MINNESOTA, county of NOBLES

At the corner location shown on the sketch :

On 11 JANUARY 2001 found 3/4" X 3/4" IRON BAR, DOWN 0.5'

left monument as found, lowered monument, removed monument (explain)

On _____ set _____



Statement of evidence relative to this corner location is on back page

I hereby certify that this document and the data contained herein was prepared by me or under my direct supervision.

[Handwritten Signature] 29 Nov. 05
 Signature Date

Registration No. 22683

- Land Surveyor, Professional Engineer
 County Surveyor, County Engineer

OFFICE OF THE COUNTY RECORDER

County of NOBLES

I hereby certify that this document was filed in the Co. Recorders office at _____ .M. on the day of _____ A.D., 20

County Recorder _____
 By _____, Deputy

DOCUMENT NO. _____

Statement of Evidence:

NORTHEAST CORNER
SECTION 8, TOWNSHIP 101 NORTH, RANGE 40 WEST, 5th P.M.
NOBLES COUNTY, MINNESOTA

- 15 Oct. 1868 - George G. Howe, U.S. Deputy Surveyor, his notes read: "North between Secs 8 & 9, Var. 11° 45' E." @ 80.00 chs. "Point for Sec. cor. in marsh set Witness Corner 3 chains north of true corner a post in mound with pits for Wit. Cor. to Secs 4, 5, 8 & 9", no ties.
- 31 Oct. 1893 - Nobles County Recorder's Office, Surveyor's Record, Volume A-2, Page 134, by Milton S. Smith, County Surveyor, for a survey of Section 4-101-40, identified this corner by a flag 3.00 chains south of witness corner where the original stake in mound was identified for the Southeast Corner and a distance east of 2635' to the South Quarter Corner.
- 30 June 1917 - Chicago, St. Paul, Minneapolis & Omaha Railway Company, Right of Way and Track Map, St. Paul to Sioux City, shows the north line of the NE ¼ of Sec. 8-101-40 at station 3213+95, which is also called the Highway x-ing.
- 20 Sept. 1930 - Nobles County Recorder's Office, Surveyor's Record, Volume B, Page 168, by C.W. Woolsteincroft, C.E., for a survey of Section 9-101-40, states that he was unable to find the Northwest Corner but does show a distance east of 2635' to the North Quarter Corner.
- Circa 1932 - Minnesota Highway Department, Right of Way Map for TH 60, CS 5305, shows the Northeast Corner of Sec. 8-101-40 as being at the station PI 294+43.0 and at the intersection of N-S & E-W roads.
- 14 Nov. 1986 - Minnesota Department of Transportation, Land Tie Field Notes, TH 60, S.P. 5305, a survey crew using a tractor backhoe excavated a hole 8' X 8' at the occupation lines and found a 3/4" X 30" iron pin, down 1' and 1.3' east of centerline of T.H. 60 and 2.7' south of centerline of Twp. Road. Tied and found another 3/4" X 30" iron pin, down 1' on centerline's of T.H. 60 & Twp. Road, adjacent to pin was a wood hub and short piece of lath, tied and continued excavating. Next, found 1" X 30" square steel bar, 2.7' west of centerline of T.H. 60 and 2.5' south of centerline Twp. Road, down 4.0' a wood stake 2" X 3" X 10" was directly below the bar. Tied and continued to excavate to a depth of 6.5' and found no other evidence of a monument. A Mn/DOT cast iron monument was placed at the location of the 1" steel bar for the Northeast Corner of Sec. 8-101-40.
- 11 Jan. 2001 - Minnesota Department of Transportation survey crew working on TH 60, SP 8827-10 & 5305-51, searched for but did not find the cast iron monument set in 1986, however a 3/4" iron stake was found, down 0.5' for the Northeast Corner of Sec. 8-101-40 that match the previously set ties from 1986. Returning in the first week of Dec. 2003 to perform a GPS survey where a distance east of 2632.86' and a distance south of 2634.91' and a distance west of 2647.01' were computed to corresponding quarter section corners.

The written evidence is not conclusive as to the true corner or the witness corner location, however the excavation work done in 1986 along with the occupational and collateral evidence suggest that this is a reasonable location as to the corner. Additional information regarding the preparation of this certificate can be obtained by contacting: Survey Section, Minnesota Department of Transportation, 501 South Victory Drive, Mankato, MN 56001.