

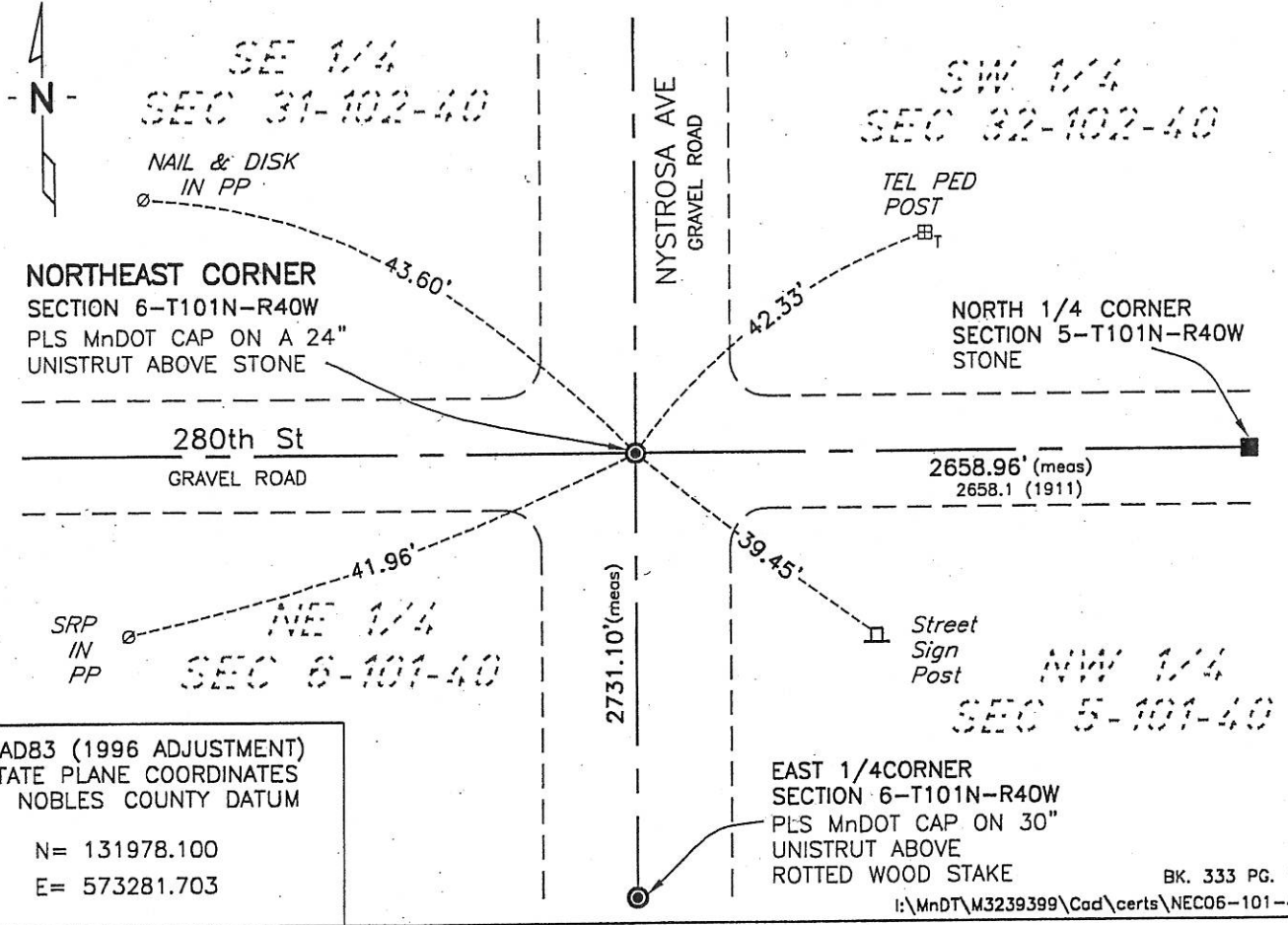
# CERTIFICATE OF LOCATION OF GOVERNMENT CORNER

NORTHEAST Corner of Section 6, Township 101, Range 40, 5th P.M.  
STATE OF MINNESOTA, County of NOBLES

At the corner location shown on the sketch:

- On 6-6-07 found a 1/2" IRON PIPE 6" BELOW SURFACE ABOVE  
GRAY STONE 36" DEEP WITH LARGE "X"  
DATE
- left monument as found,  lowered monument,  removed monument (explain)
- On 6-21-07 placed an IRON PIPE @ NW CORNER OF STONE & SET PLS MnDOT  
CAP ON A 24" UNISTRUT ABOVE STONE MONUMENT  
DATE

### SKETCH OF REFERENCE TIES



NAD83 (1996 ADJUSTMENT)  
STATE PLANE COORDINATES  
NOBLES COUNTY DATUM

N= 131978.100  
E= 573281.703

BK. 333 PG. 12  
I:\MnDT\M3239399\Cad\certs\NEC06-101-40

Statement of evidence relative to this corner location is on back of page.

I hereby certify that this document and the data contained herein was prepared by me or under my direct supervision.

*Joseph A. Haefner*  
JOSEPH A. HAEFNER  
6-25-2007  
DATE

Registration No. 43909

Land surveyor,  Professional Engineer  
 County Surveyor,  County Engineer

OFFICE OF THE COUNTY RECORDER  
County of \_\_\_\_\_

I hereby certify that this document was filed in the Co. Recorders office at \_\_\_\_M. on the \_\_\_\_\_ day of \_\_\_\_\_ A.D., 20\_\_\_\_

County Recorder \_\_\_\_\_  
By \_\_\_\_\_, Deputy  
DOCUMENT NO. \_\_\_\_\_

Statement of Evidence

Northeast Quarter Corner Section 6, Township 101 North, Range 40 West

- 1867 -Thomas B. Walker, U.S. Deputy Surveyor, his notes read: "East Random Line Between Towns 101 & 102, Range 40." "I set temporary corners along line & at intersect town line 15.50 chs north of corner." "Upon examination; I find my instrument grossly our of repair & adjustment" "Declination Bar badly bent by shutting the box cover on it, telescope axis askew as also telescope sights." "As my line cannot be straight, I now sure west Random line & at a point 130 lks. North of Town Corner." "My correction will be 21.23 lks south per mile, the excess remaining at the west end." "S 89° 51' E between Sections 6 & 31, Var 11°15' E," @ 41.23 chs "1/4 Coner Post in Mound", no ties
- 27 Apr. 1911 -Nobles County Recorder's Office, Surveyor's Record, Volume B, Page 12, by William A. Saxon, County Surveyor, for a survey of Section 32-102-40, states "Found a stone at the NE Corner of Sec 6 in Bigelow Township, with a cross mark cut in it, but found no record of this stone" "also found an iron bolt at this corner about 2 ½ feet west of the stone" "I discarded the bolt and used the stone as the corer, as it tallied more nearly with the measurements" a distance of east 2658.1' is shown to the corresponding quarter section corner, ties are shown as follows: Tel Pole – 69' NE  
Stump – 46' SW
- 1931 Nobles County Highway Department records state a stone was found, at this corner.
- 1935 Nobles County Highway Department records state a stone was found, at this corner.
- 1969 Nobles County Highway Department records state a 2X2 hub found at this corner and ½' x 24" iron pipe was placed.
- 1978 Nobles County Highway Department records state an iron pin was found, at this corner, ties are shown as follows: Nail & Disk Cor Fence Post – 56.84 SE  
Nail & Disk in Power Pole – 41.63 SW  
Nail & Disk in Power Pole – 41.31' NW  
Nail & Disk in UTC MRK – 44.25 NE
- 9 May 2007 -Bolton & Menk, Inc., survey crew survey crew found a ½" x 24" iron pipe 6" below gravel surface (removed during excavation) on top of a gray granite stone with an "X", 36" below the gravel surface. Distance of east 2658.96' and south 2731.00' was measured to the corresponding quarter corners.
- 21 June 2007 -Bolton & Menk, Inc., survey crew set a PLS MnDot Cap on a 24" Unistrut on top of the above referenced stone.

This evidence is conclusive back to the 1911 survey by Saxon. The evidence does not tie the original stake to the stone; however the stone is the best evidence of the true corner location. Additional information regarding the preparation of this certificate can be obtained by contacting: Bolton & Menk, Inc., 219 North Main Street, Fairmont, MN 56013.