

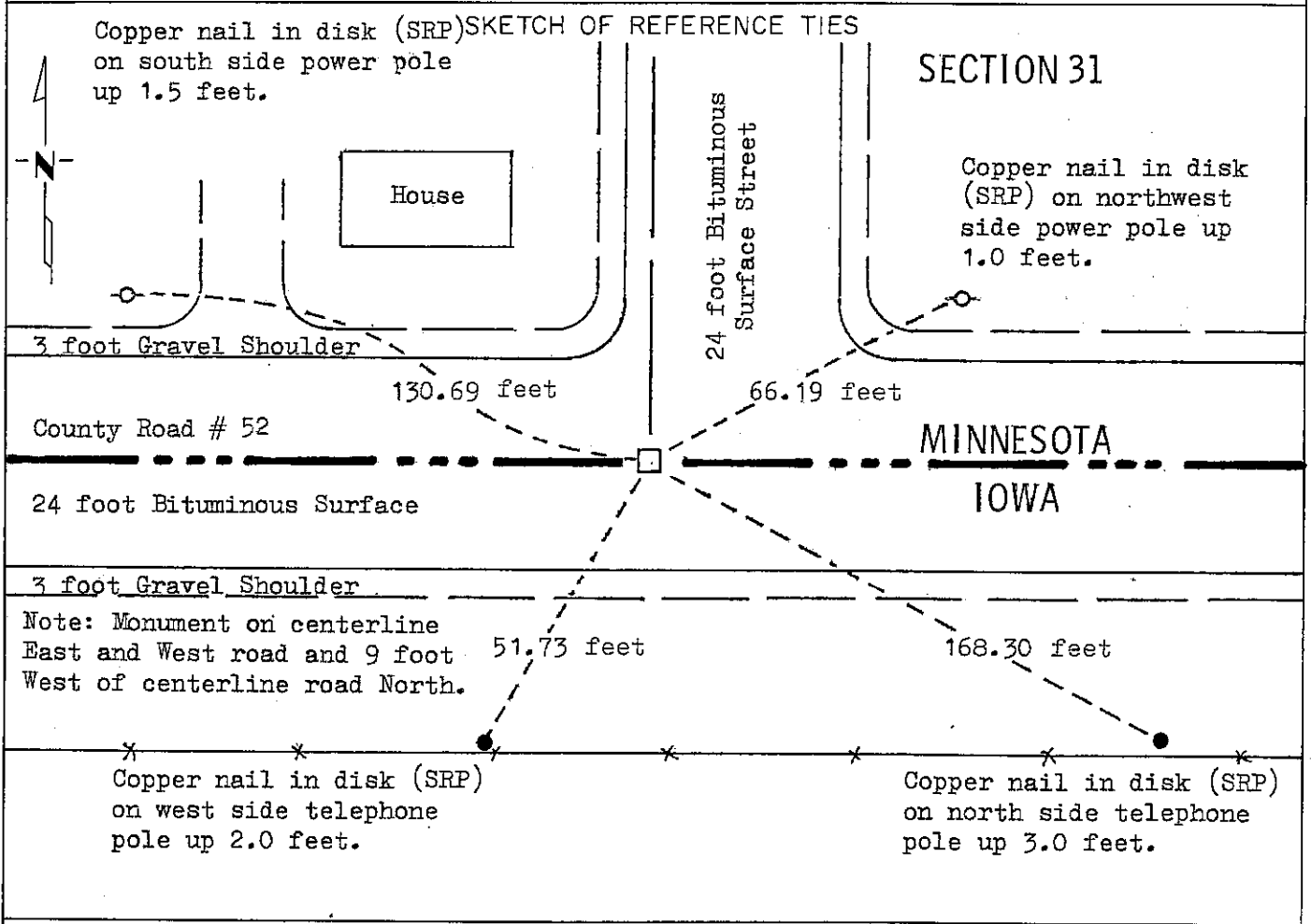
CERTIFICATE OF LOCATION OF GOVERNMENT CORNER

SOUTH QUARTER Corner of Section 31, Township 101 N, Range 40 W, 5 P.M.

STATE OF MINNESOTA, County of NOBLES

At the corner location shown on the sketch:

- On Aug. 31, 1977 found a 4 inch by 4 inch by 18 inch Concrete Monument with Iron Pin in center, over "+" on 14 inch by 14 inch by 18 inch stone down 2.0 feet.
 left monument as found, lowered monument, removed monument (explain)
- On _____ placed a _____



Statement of evidence relative to this corner location is on back of page.

I hereby certify that this document and the data contained herein was prepared by me or under my direct supervision.

S. Ellen Lotz 2-4-83
SIGNATURE DATE

Registration No. 11933

- Land Surveyor, Professional Engineer
- County Surveyor, County Engineer

OFFICE OF THE COUNTY RECORDER

County of Nobles

I hereby certify that this document was filed in the Co. Recorders office at 4:00 P. .M. on the 6th day of September A.D., 19 91

County Recorder James Howard

By _____, Deputy

DOCUMENT NO. 245393

Statement of Evidence: South Quarter 31 T101N R40W 5th P.M.

- Aug. 7, 1852 Andrew Talcott - Surveyed south boundary of Minnesota "Set $\frac{1}{4}$ section post in mound of earth & sod with trench & pits as per instructions". "Surface gently rolling prairie rather wet to cultivate, but first rate for grass."
- June 25, 1917 Wm. A. Saxon, County Surveyor, survey notes read, "Found the stone at S. $\frac{1}{4}$ cor. "It is 2645 feet to the section corner east."
- Aug. 31, 1977 George Koens, Minnesota Department of Transportation survey crew, excavated with tractor backhoe, found a $\frac{3}{4}$ inch iron rod in center of a 4 inch by 4 inch by 18 inch concrete monument over a "+" chiseled on a 14 inch by 14 inch by 18 inch stone down 2.0 feet below bituminous surface.

I do not know who set the stone or concrete monument. I do know that many stones were set by county surveyors to perpetuate location of land corners during the decades around the turn of the century. Field measurements coincide with the other monuments in the area so I accept the location of concrete monument over the "+" in the stone as the south quarter corner to section 31.

For additional information, including field measurements and photographs, contact the Minnesota Department of Transportation in Windom.

Tract Compared dm
 Photo
 Fee