

CERTIFICATE OF LOCATION OF GOVERNMENT CORNER

SOUTH QUARTER Corner of Section 31, Township 101N, Range 40W, 5th P.M.

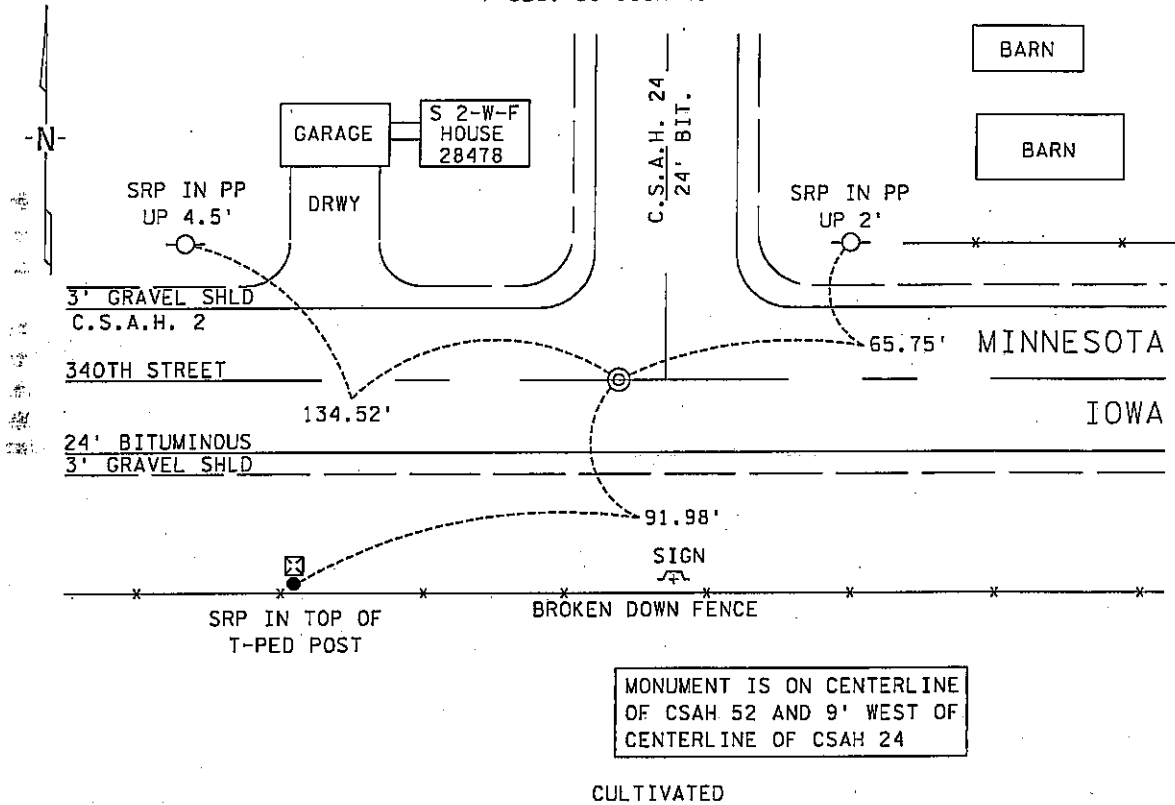
STATE OF MINNESOTA, County of NOBLES

At the corner location shown on the sketch :

- On 4 JUNE 1999 found IRON ROD IN 4"X4" CONCRETE MONUMENT DOWN 6"
- left monument as found, lowered monument, removed monument (explain)
- On _____ set _____

Sketch of reference ties

SEC. 31-101N-40W



Statement of evidence relative to this corner location is on back page

I hereby certify that this document and the data contained herein was prepared by me or under my direct supervision.

Signature: [Handwritten Signature] Date: 29 Nov. 05

Registration No. 22683
 Land surveyor, Professional Engineer
 County Surveyor, County Engineer

OFFICE OF THE COUNTY RECORDER

County of NOBLES

I hereby certify that this document was filed in the Co. Recorders office at _____ .M. on the day of _____ A.D., 19

County Recorder _____
 By _____, Deputy

DOCUMENT NO. _____

Statement of Evidence:

SOUTH QUARTER CORNER
SECTION 31, TOWNSHIP 101 NORTH, RANGE 40 WEST, 5th P.M.
NOBLES COUNTY, MINNESOTA

- 7 Aug. 1852 - Captain Andrew Talcott, Principle Deputy Surveyor, his notes read: "East on the South side of Section 31, Variation 13° 20' East." @ 40.00 chs. "Set 1/4 Section Post in mound of earth & sod with trench & pits as per instructions", no ties.
- 25 June 1917 - Nobles County Recorder's Office, Surveyor's Record, Volume B, Page 94, by William A. Saxon, County Surveyor, for a survey of Section 31-101-40, shows that he found 'Old Stone' at the South Quarter Corner with a distance east of 2545' to the corresponding section corner.
- Circa 1962 - Nobles County Highway Department, Bigelow Twp. Corner Book, states that a stake was in place at the South Quarter Corner of Section 31-101-40 and that a iron pin was placed along with ties: N & D in PP 62.75' NE; N & D in TP 51.90' SW; SE Cor. Pump Foundation 73.45' NW.
- 31 Aug. 1977 - Nobles County Recorder's Office, Document No. 245393, Certificate of Location of Gov't Corner, South Quarter Corner, Sec. 31-101-40, by G. Eldon Lober, RLS # 11933, states that a survey crew with a tractor backhoe, found a 3/4" iron rod in center of a 4" X 4" X 18" concrete monument over a "+" chiseled over a 14" X 14" X 18" stone, down 2' below bituminous surface.
- 4 June 1999 - Minnesota Department of Transportation survey crew, found the previously identified 3/4" iron rod in center of 4" X 4" X 18" concrete monument for the South Quarter Corner of Sec. 31-101-40. Returning in the first week of Dec. 2003 a GPS survey and a distance west of 2644.12' and a distance east of 2645.36' were computed to corresponding section corners.

The written evidence is continuous back to 1917 where the distance measurements between then and now are excellent even though it is unclear as to the original corner location. The occupational and collateral evidence support that this as a reasonable location as to the corner. Additional information regarding the preparation of this certificate can be obtained by contacting: Survey Section, Minnesota Department of Transportation, 501 South Victory Drive, Mankato, MN 56001.