

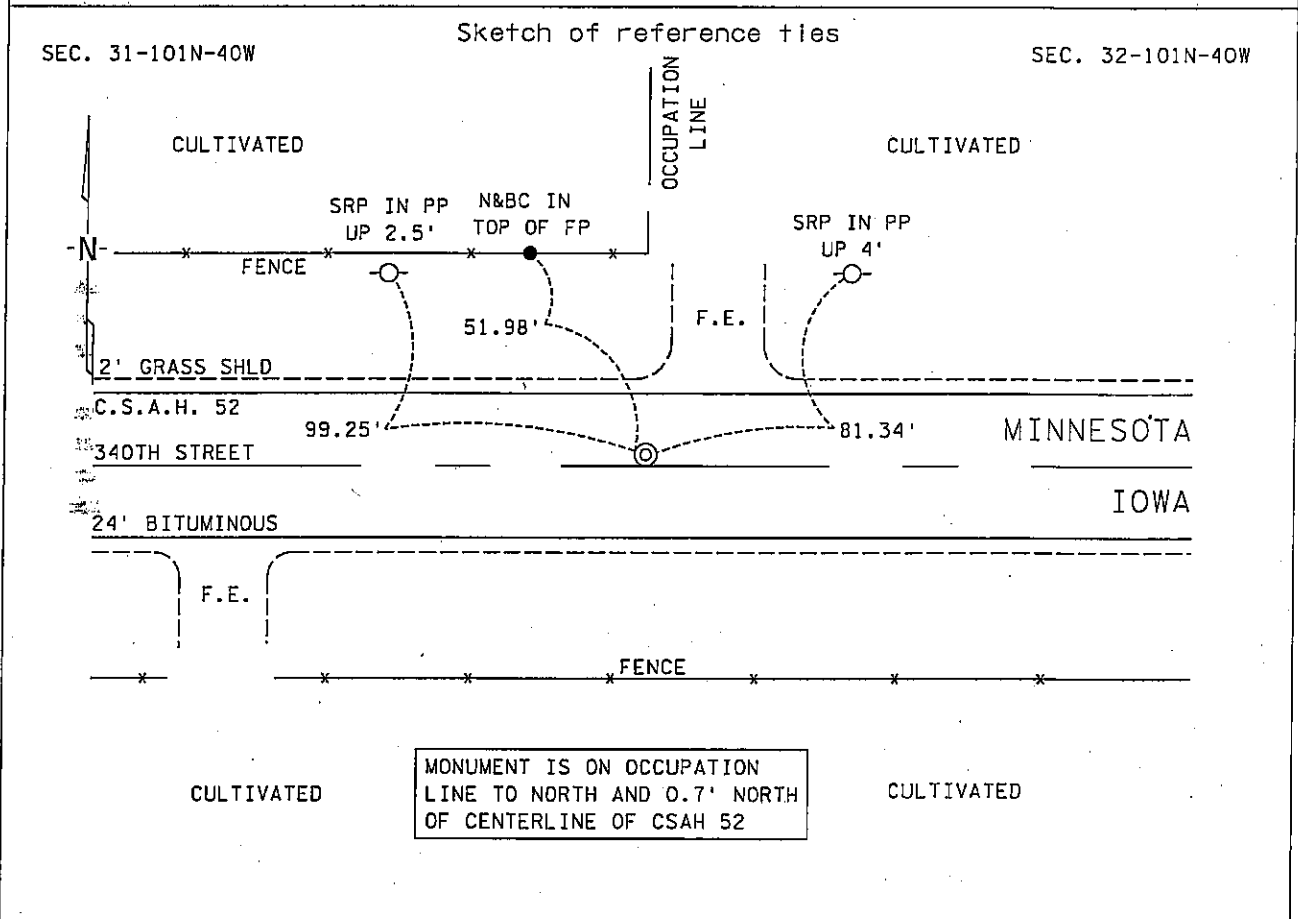
CERTIFICATE OF LOCATION OF GOVERNMENT CORNER

SOUTHEAST Corner of Section 31, Township 101N, Range 40W, 5th P.M.

STATE OF MINNESOTA, County of NOBLES

At the corner location shown on the sketch :

- On 8 JAN 2001 found 4"X4" CONCRETE MONUMENT WITH 3/8" BAR
IMBEDDED IN THE MIDDLE DOWN 1.5'
 left monument as found, lowered monument, removed monument (explain)
- On 8 JAN 2001 set 3/4"X12" IRON PIN DOWN 0.1'



Statement of evidence relative to this corner location is on back page

I hereby certify that this document and the data contained herein was prepared by me or under my direct supervision.

[Signature]
 Signature _____ Date 29 Nov. 05

Registration No. 22683

Land surveyor, Professional Engineer
 County Surveyor, County Engineer

OFFICE OF THE COUNTY RECORDER
 County of NOBLES

I hereby certify that this document was filed in the Co. Recorders office at _____ .M. on the day of _____ A.D., 19____

County Recorder _____
 By _____, Deputy

DOCUMENT NO. _____

Statement of Evidence:

SOUTHEAST CORNER
SECTION 31, TOWNSHIP 101 NORTH, RANGE 40 WEST, 5th P.M.
NOBLES COUNTY, MINNESOTA

- 7 Aug. 1852 - Captain Andrew Talcott, Principle Deputy Surveyor, his notes read: "East on the South side of Section 31, Variation 13° 20' East" @ 80.00 chs. "Set a post in mound of earth & sod with trench & pits as per instructions for corner to Sections 31 & 32", no ties.
- 25 June 1917 - Nobles County Recorder's Office, Surveyor's Record, Volume B, Page 94, by William A. Saxon, County Surveyor, for a survey of Section 31-101-40, shows nothing found or set for the Southeast Corner but does show a distance west of 2645' and a distance north of 2647' to the corresponding quarter section corners.
- Circa 1922 - Nobles County Highway Department, Bigelow Twp. Corner Book, states that a stone was in place at the Southwest Corner of Section 32-101-40.
- Circa 1962 - Nobles County Highway Department, Bigelow Twp. Corner Book, states that a stone was in place at the Southwest Corner of Section 32-101-40 and that a iron pin was placed and ties were taken: N & D in Brace Pole 51.95' NW; N & D in Brace Pole 50.60' NE.
- 8 Jan. 2001 - Minnesota Department of Transportation, survey crew working on TH 60, SP 5305-51, found a 4" X 4" concrete monument with a 3/8" iron bar in center, down 1.5' and set a 3/4" X 12" iron pin over the concrete monument for the Southeast Corner of Sec. 31-101-40. Returning in the first week of Dec. 2003 to perform a GPS survey where a distance north of 2646.97' and a distance west of 2645.36' were computed to corresponding quarter section corners.

The written evidence does not indicate the relationship between the 1852 post, the 1922 stone, the 1962 iron pin and the 2001 concrete monument. The section corner monuments appear to be disconnected in every way however the distance measurement comparison from 1917 and today are remarkable. The occupational and collateral evidence suggest that this is a reasonable location as to the corner. Additional information regarding the preparation of this certificate can be obtained by contacting: Survey Section, Minnesota Department of Transportation, 501 South Victory Drive, Mankato, MN 56001.