

# CERTIFICATE OF LOCATION OF GOVERNMENT CORNER

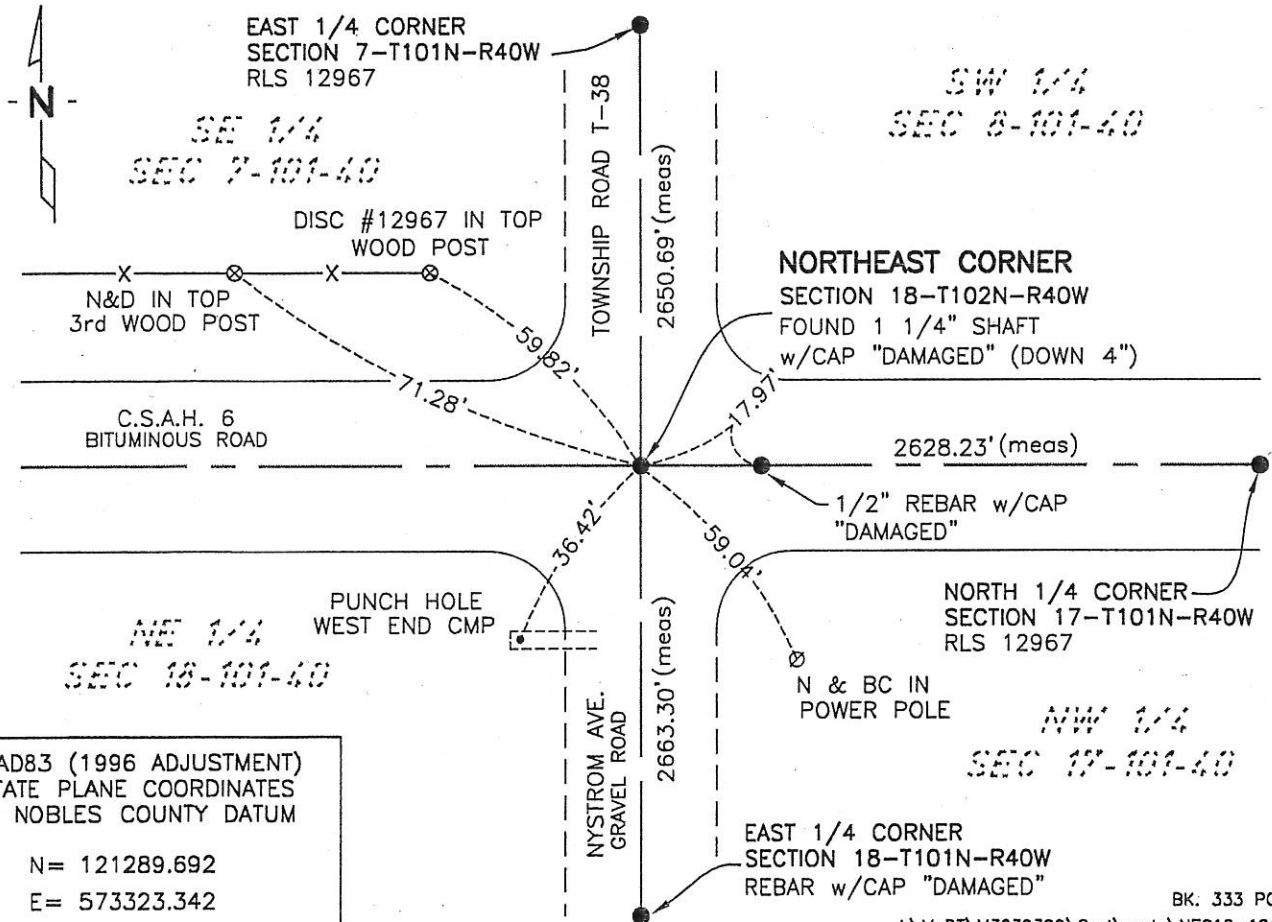
NORTHEAST Corner of Section 18, Township 101, Range 40, 5th P.M.

STATE OF MINNESOTA, County of NOBLES

At the corner location shown on the sketch:

- On 6-20-07 found a 1 1/4" IRON ROD WITH PLASTIC CAP "DAMAGED"  
DATE
- left monument as found,  lowered monument,  removed monument (explain)
- On \_\_\_\_\_ DATE

### SKETCH OF REFERENCE TIES



NAD83 (1996 ADJUSTMENT)  
STATE PLANE COORDINATES  
NOBLES COUNTY DATUM

N = 121289.692  
E = 573323.342

BK. 333 PG. 37

I:\MndT\M3239399\Cod\certs\NEC18-101-40

Statement of evidence relative to this corner location is on back of page.

I hereby certify that this document and the data contained herein was prepared by me or under my direct supervision.

Joseph A. Haefner 6-28-2007  
JOSEPH A. HAEFNER DATE

Registration No. 43909

- Land surveyor,  Professional Engineer
- County Surveyor,  County Engineer

### OFFICE OF THE COUNTY RECORDER

County of \_\_\_\_\_

I hereby certify that this document was filed in the Co. Recorders office at \_\_\_\_\_ M. on the \_\_\_\_\_ day of \_\_\_\_\_ A.D., 20\_\_\_\_

County Recorder \_\_\_\_\_

By \_\_\_\_\_, Deputy

DOCUMENT NO. \_\_\_\_\_

Statement of Evidence

Northeast Corner Section 18, Township 101 North, Range 40 West

- 14 Oct 1868 -George G. Howe, U.S. Deputy Surveyor, his notes read: "North between Sections 17 & 18, Var 11° E." @80.00 chs "Set post in mound with pits for corner to Sections 7, 8, 17 & 28, no ties.
- Circa 1956 - Nobles County Highway Department, Bigelow Township Corner Book, states that a stake was in place at the Southwest Corner of Section 8-101-40.
- Circa 1960 - Nobles County Highway Department, Bigelow Township Corner Book, states that a iron pin was in place at the Southwest Corner of Section 8-101-40 with ties: N&D in TP=57.58'NW, N&D in PP=57.37'SE, N&D in TP=57.83'SW.
- 19 May 1982 -Martin Land Surveying, Inc. of Worthington, Minnesota, Job No. 82020, signed by Gary D. Martin, RLS #12967, notes for a survey of part of Section 7-101-40, states that he set a ½" rebar for the Southeast corner at a point 18.0' east of the centerline of Township Road and 1.0' south of the County Road and set the following ties: N&D in CFP=71.35'NW, N&D in PP=51.73' SE, N&D in CFP=70.82'SW.
- 14 Dec 1982 -Martin Land Surveying, Inc. of Worthington, Minnesota, Job No. 82065, signed by Gary D. Martin, RLS #12967, notes for a survey of part of Section 17-101-40, states that he found the ½" rebar per Job No. 82020 and found a bridge spike at centerline-centerline intersection.
- 23 Jan 1989 -Bell Survey, Inc., of Worthington, Minnesota, Job No. 87001, a survey by Timothy P. Bell, RLS #16093, for a part of section 8-101-40, shows a found monument at the Southwest Corner.
- Circa 1992 - Nobles County Highway Department, Bigelow Township Corner Book, states that a iron pin was in place at the Southwest Corner of Section 18-101-40 with ties: N&D in TP=57.23'NW, N&D in PP=58.75'SE, N&D in FP=71.20'NW.
- 5 Jan 2001 -Minnesota Highway Department of Transportation survey crew working on TH 60, SP 8827-10 & 5305-51 found a "PK" nail flush with the surface and on the centerlines of County Roads No. 6 and Township Road T-38 for the Northeast corner of section 18-101-40. A 1 ¼" iron pipe with damaged plastic cap was found down 0.5'. Ties include Disk Stamped PLS #12967 Top of FP=59.83'NW, SRP Top of FP=90.65'NW, SRP in PP=59.10'SE.
- Dec 2003 - Minnesota Highway Department of Transportation survey crew returned to perform GPS survey where a distance north of 2658.08' and a distance east of 2628.23' and a distance south of 2663.30' were computed to corresponding quarter section corners.
- 20 June 2007 -Bolton & Menk, Inc., survey crew found a 1 ¼" iron rod w/cap "damaged" near the intersection of C.S.A.H. No. 6 & Township Road T-38 (Nystrom Ave) and a ½" iron rod w/cap "damaged" 17.85' east.

The written evidence shows a discrepancy with the 1982 work of Martin, this position (17 east) does not agree with any of previous evidence nor does it agree with the occupational evidence, thus the 1982 survey work by Martin has been disregarded.

The remaining evidence is not tied to the original post however, the occupational and collateral evidence suggest this is a reasonable location as to the true corner location. Additional information regarding the preparation of this certificate can be obtained by contacting: Bolton & Menk, Inc., 219 North Main Street, Fairmont, MN 56013.