

# CERTIFICATE OF LOCATION OF GOVERNMENT CORNER

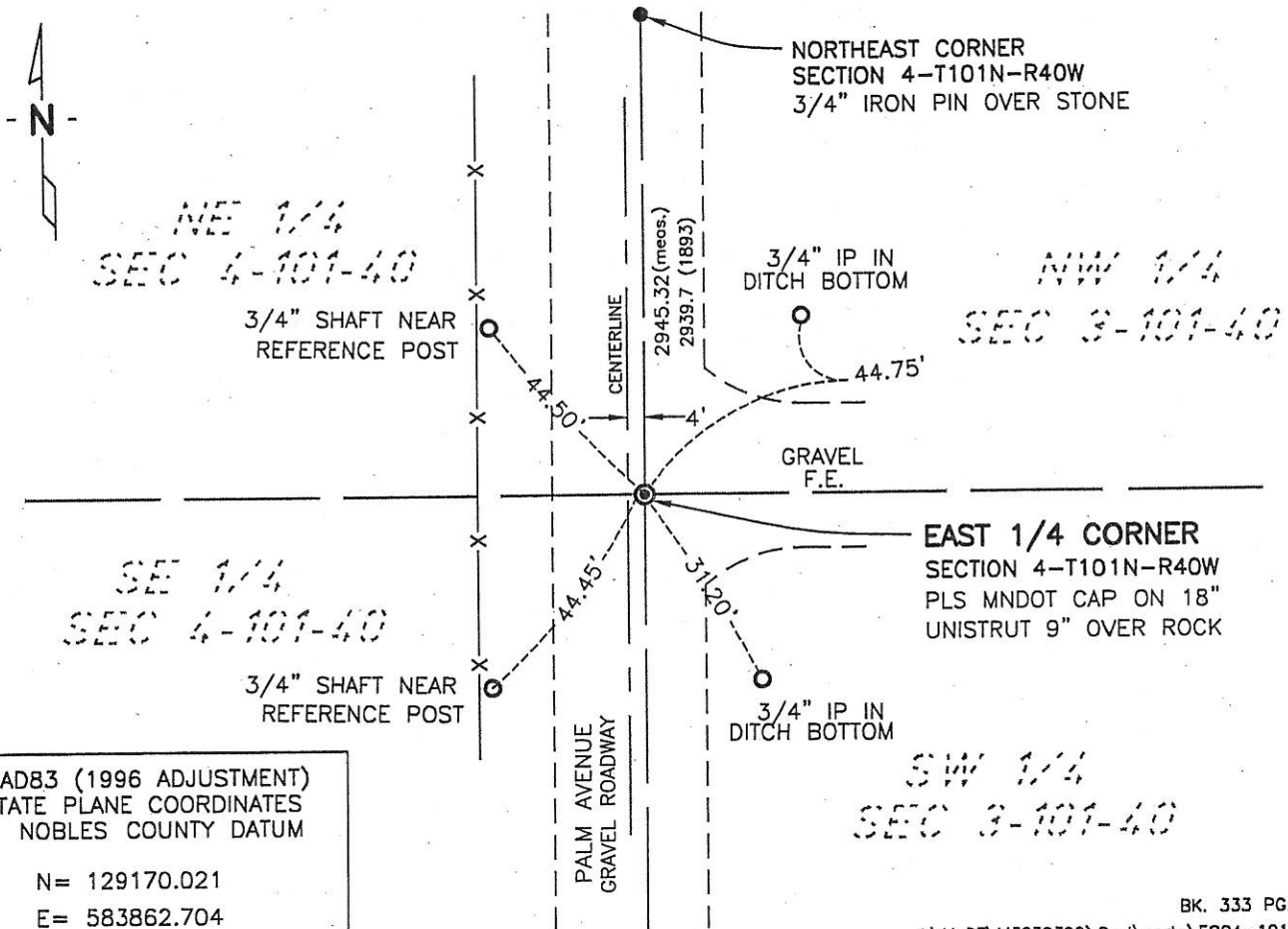
EAST 1/4 Corner of Section 4, Township 101, Range 40, 5th P.M.

STATE OF MINNESOTA, County of NOBLES

At the corner location shown on the sketch:

- On 6-21-07 found a PLS MnDOT CAP ON 18" UNISTRUT OVER ROCK  
DATE
- left monument as found,  lowered monument,  removed monument (explain)
- On \_\_\_\_\_ placed a \_\_\_\_\_  
DATE

### SKETCH OF REFERENCE TIES



NAD83 (1996 ADJUSTMENT)  
STATE PLANE COORDINATES  
NOBLES COUNTY DATUM

N= 129170.021  
E= 583862.704

BK. 333 PG. 28

I:\MnDT\M3239399\Cod\certs\EQ04-101-40

Statement of evidence relative to this corner location is on back of page.

I hereby certify that this document and the data contained herein was prepared by me or under my direct supervision.

Joseph A. Haepner 6-25-0007  
 JOSEPH A. HAEPNER DATE

Registration No. 43909

- Land surveyor,  Professional Engineer
- County Surveyor,  County Engineer

### OFFICE OF THE COUNTY RECORDER

County of \_\_\_\_\_

I hereby certify that this document was filed in the Co. Recorders office at \_\_\_\_M. on the \_\_\_\_\_ day of \_\_\_\_\_ A.D., 20\_\_\_\_

County Recorder \_\_\_\_\_

By \_\_\_\_\_, Deputy

DOCUMENT NO. \_\_\_\_\_

Statement of Evidence

East Quarter Corner Section 4, Township 101 North, Range 40 West

- 1868 -George G. Howe, U.S. Deputy Surveyor, his notes read: "North of Random line between Sections 3 & 4, Var 11°E." @ 40.00 chs. "Set temp 1/4 Post" @ 84.50 chs. "Intersect Town Line 22 lks West of Corner to Sections 3, 4, 33 & 34" "S 0° 9"W between Sections 3 & 4, Var 11°E" @ 44.50 chs. "Set Post in Mound with Pits for 1/4 Section Corner" no ties.
- 24 Oct 1893 -Nobles County Recorder's Office, Surveyor's Record, Volume A-2, Page 132-133, by Milton S. Smith, County Surveyor, for a survey of Sections 3, states "1/4 Post on West set Stone on line with Section Corners. At distance shown on map". Distances on map are shown to be north 2939.7' and south 2642.4' to the corresponding section corners.
- 24 July 2006 -Minnesota Department of Transportation, survey crew found a 12" diameter rock 4 feet east of gravel centerline 33" deep and set a PLS MnDot Cap on a 18" Unistrut over rock 9" below gravel surface.
- 20 June 2007 -Bolton & Menk, Inc., survey crew found the above referenced PLS MnDot Cap. A distance of north 2945.32' was measured to the corresponding section corner.

The evidence appears to be conclusive back to the 1893 survey by Smith, the measurement data from 1893 and 2007 are somewhat reasonable considering the time span; therefore I accept this as the true corner location. Additional information regarding the preparation of this certificate can be obtained by contacting: Bolton & Menk, Inc., 219 North Main Street, Fairmont, MN 56013.