

CERTIFICATE OF LOCATION OF GOVERNMENT CORNER

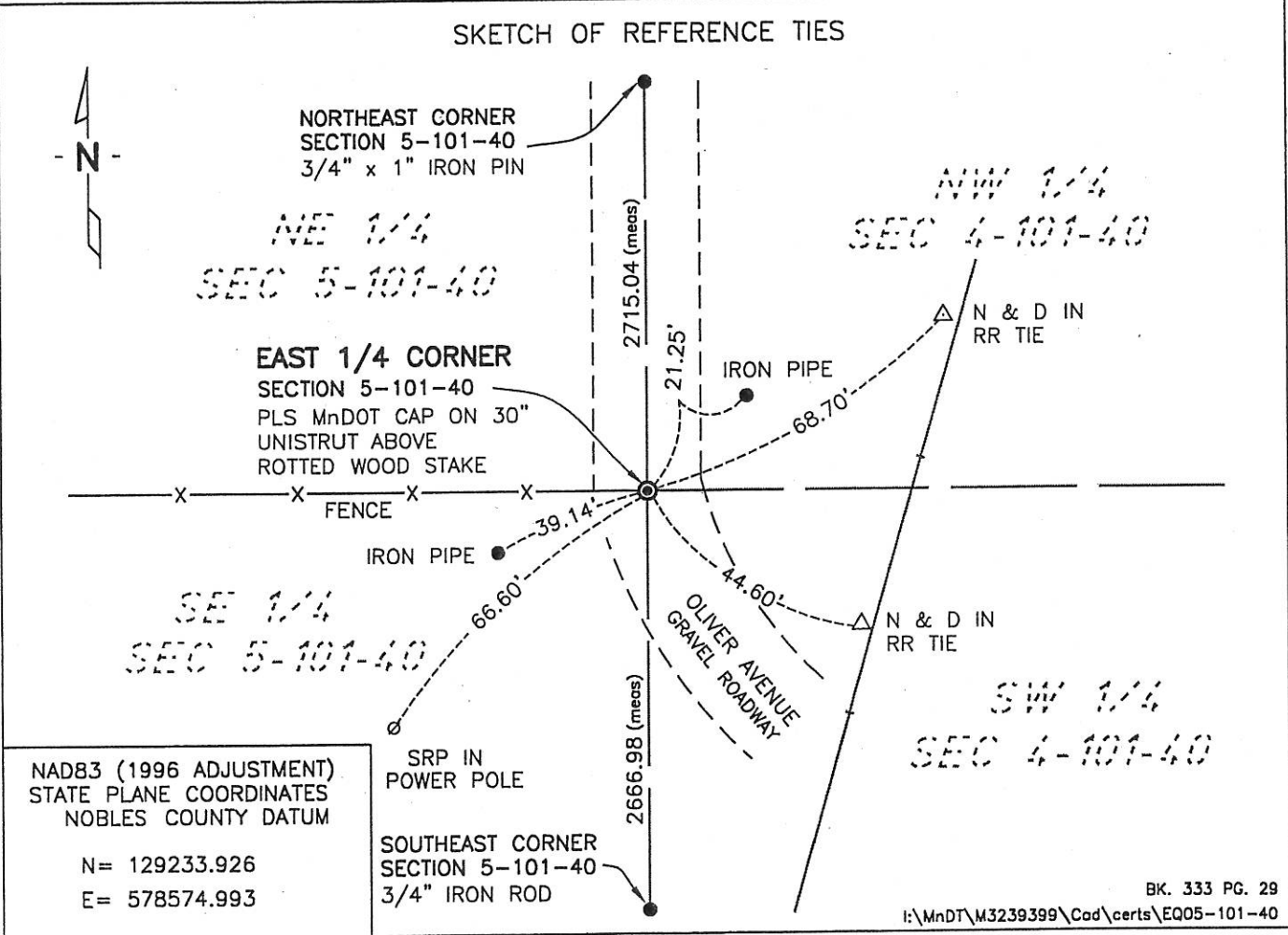
EAST 1/4 Corner of Section 5, Township 101, Range 40, 5th P.M.

STATE OF MINNESOTA, County of NOBLES

At the corner location shown on the sketch:

- On 7-24-06 found a ROTTED STAKE (3' DEEP) IN CENTERLINE OF ROAD
DATE
- left monument as found, lowered monument, removed monument (explain)
- On 6-21-07 placed a PLS MnDOT CAP ON 30" UNISTRUT ABOVE ROTTED STAKE
DATE

SKETCH OF REFERENCE TIES



NAD83 (1996 ADJUSTMENT)
STATE PLANE COORDINATES
NOBLES COUNTY DATUM

N= 129233.926
E= 578574.993

BK. 333 PG. 29
I:\MnDT\M3239399\Cad\certs\EQ05-101-40

Statement of evidence relative to this corner location is on back of page.

I hereby certify that this document and the data contained herein was prepared by me or under my direct supervision.

Joseph A. Haefner 6-28-2007
JOSEPH A. HAEFNER DATE

Registration No. 43909

- Land surveyor, Professional Engineer
- County Surveyor, County Engineer

OFFICE OF THE COUNTY RECORDER

County of _____

I hereby certify that this document was filed in the Co. Recorders office at ____M. on the _____ day of _____ A.D., 20__

County Recorder _____

By _____, Deputy

DOCUMENT NO. _____

Statement of Evidence

East Quarter Corner Section 5, Township 101 North, Range 40 West

- 1868 -George G. Howe, U.S. Deputy Surveyor, his notes read: "North of Random line between Sections 4 & 54, Var 11°30'E." @ 40.00 chs. "Set temp 1/4 Post" @ 81.16 chs. "Intersect north boundary of township 61 lks west of corner to sections 4, 5, 32& 33" "S 0° 26"W between Sections 4 & 5, Var 11°30'E" @ 41.16 chs. "Set Post in Mound with Pits for 1/4 Section Corner" no ties.
- 1893 Nobles County Highway Department records state a stake was in-place at this corner.
- 24 July 2006 -Minnesota Department of Transportation, survey crew found a rotted stake in the centerline of gravel roadway 3' below the surface.
- 21 June 2007 -Bolton & Menk, Inc., survey crew set a PLS MnDot Cap on a 30" Unistrut on top of the above referenced stake.

This evidence appears to be conclusive back to the 1893 stake. The evidence does not tie the original stake to the 1893 stake; however the stake is the best evidence of the true corner location. Additional information regarding the preparation of this certificate can be obtained by contacting: Bolton & Menk, Inc., 219 North Main Street, Fairmont, MN 56013.