

CERTIFICATE OF LOCATION OF GOVERNMENT CORNER

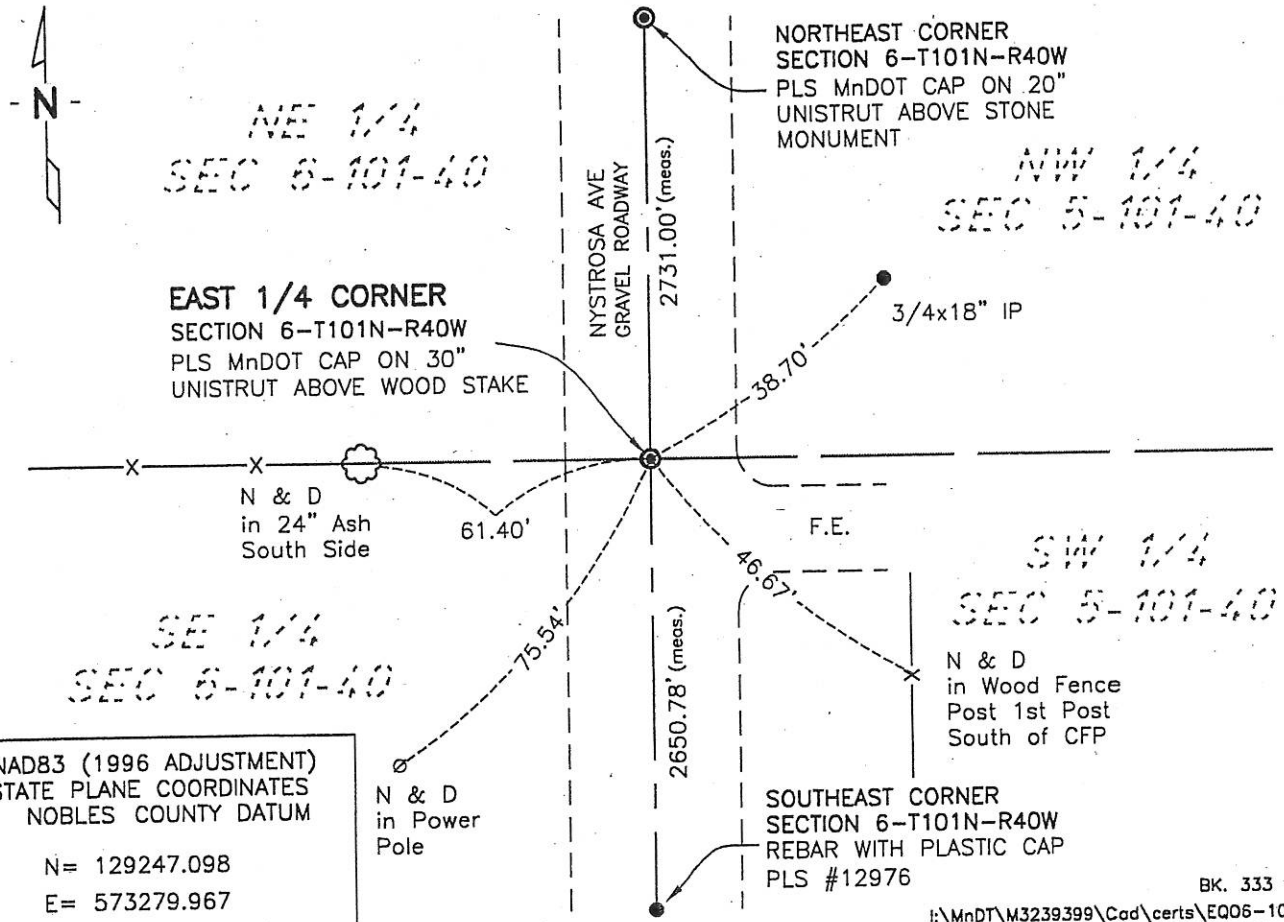
EAST 1/4 Corner of Section 6, Township 101, Range 40, 5th P.M.

STATE OF MINNESOTA, County of NOBLES

At the corner location shown on the sketch:

- On 6-6-07 found a IRON PIPE WITH CAP #16093 (REMOVED DURING EXCAVATION) ABOVE ROTTED WOOD STAKE (2.5' DEEP)
 - left monument as found, lowered monument, removed monument (explain)
- On 6-6-07 placed a 3/4" IRON PIPE w/CAP #43909 IN CENTER OF WOOD STAKE & SET A PLS MnDOT CAP ON A 30" UNISTRUT ABOVE WOOD STAKE

SKETCH OF REFERENCE TIES



NAD83 (1996 ADJUSTMENT)
STATE PLANE COORDINATES
NOBLES COUNTY DATUM

N= 129247.098
E= 573279.967

BK. 333 PG.12
I:\MnDT\M3239399\Cad\certs\EQ06-101-40

Statement of evidence relative to this corner location is on back of page.

I hereby certify that this document and the data contained herein was prepared by me or under my direct supervision.

Joseph A. Haefner

JOSEPH A. HAEFNER

6-25-2007

DATE

Registration No. 43909

Land surveyor, Professional Engineer
 County Surveyor, County Engineer

OFFICE OF THE COUNTY RECORDER

County of _____

I hereby certify that this document was filed in the Co. Recorders office at ____M. on the _____ day of _____ A.D., 20____

County Recorder _____

By _____, Deputy

DOCUMENT NO. _____

East Quarter Corner Section 6, Township 101 North, Range 40 West

1868 -George G. Howe, U.S. Deputy Surveyor, his notes read: "North of Random line between Sections 5 & 6, Var 11°30'E." @ 40.00 chs. "Set temp 1/4 Post" @ 81.10 chs. Intersect north boundary of township 25 lks west of corner to Sections 5, 6, 31 & 32" "S 0° 11' W between Sections 5 & 6, Var 11°30'E" @ 40.10 chs. "Set Post in Mound with Pits for 1/4 Section Corner" no ties.

9 May 2007 -Bolton & Menk, Inc., survey crew survey crew found an iron pipe with Timothy Bell cap marked by Reg No. 16093 at surface (removed during excavation) and a rotted wood stake (2.5' deep). Bolton & Menk, Inc., survey crew set a 3/4" iron pipe in the center of said wood stake.

21 June 2007 -Bolton & Menk, Inc., survey crew set a PLS Mndot Cap on a 30" Unistrut on top of the above referenced rotted wood stake.

This evidence is not conclusive as to the true corner location however the occupational and collateral evidence support that this is a reasonable location as to the corner location. Additional information regarding the preparation of this certificate can be obtained by contacting: Bolton & Menk, Inc., 219 North Main Street, Fairmont, MN 56013.