

CERTIFICATE OF LOCATION OF GOVERNMENT CORNER

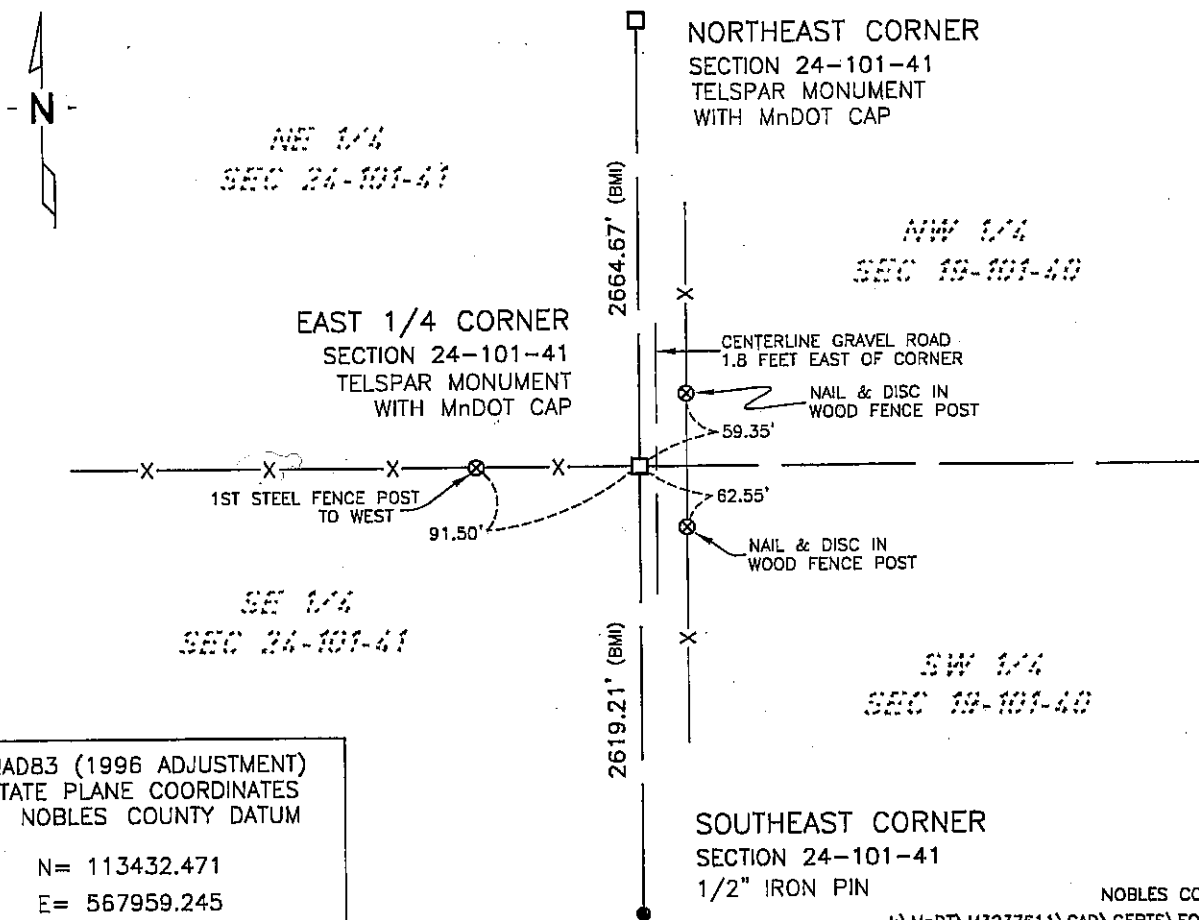
EAST QUARTER Corner of Section 24, Township 101, Range 41, 5th P.M.

STATE OF MINNESOTA, County of NOBLES

At the corner location shown on the sketch:

- On 12/1/05 found a Stone Monument 1.5 feet below the surface, 1.8 feet
DATE
West of gravel centerline and in line with a fence running West.
- left monument as found, lowered monument, removed monument (explain)
- On 12/1/05 placed a 3/4" Iron Pipe on the West side of Stone Monument.
DATE

SKETCH OF REFERENCE TIES



NADB3 (1996 ADJUSTMENT)
 STATE PLANE COORDINATES
 NOBLES COUNTY DATUM

N= 113432.471
 E= 567959.245

NOBLES CO. PG. 43-45
 I:\MndT\M3237611\CAD\CERTS\EQ2410141.DWG

Statement of evidence relative to this corner location is on back of page.

I hereby certify that this document and the data contained herein was prepared by me or under my direct supervision.

Joseph A. Haefner 5-15-2006
 JOSEPH A. HAEFNER DATE

Registration No. 43909

- Land surveyor, Professional Engineer
- County Surveyor, County Engineer

OFFICE OF THE COUNTY RECORDER

County of _____

I hereby certify that this document was filed in the Co. Recorders office at ____M. on the _____ day of _____ A.D., 20____

County Recorder _____

By _____, Deputy

DOCUMENT NO. _____

Statement of Evidence:

EAST QUARTER CORNER
SECTION 24, TOWNSHIP 101 NORTH, RANGE 41 WEST
5th PRINCIPAL MERIDIAN, MINNESOTA

- 11 July 1867 -T.B. Walker, U.S. Deputy Surveyor, "North between Ranges 40 and 41, Township 102, between sections 19 & 24" @ 40.00 chs. "1/4 section corner post in mound", no ties.
- 1955 -Nobles County Highway department records show a stone and a wood stake was placed, no ties.
- 1969 -Nobles County Highway department records show an iron pin was placed, no ties.
- 1 Dec. 2005 -Bolton & Menk, Inc. survey crew found a 16"x11"x7" Stone Monument, 1.5 feet below the surface. Wood chips were observed while excavating. No evidence of iron pin was found. Stone monuments lies 1.8 feet west of the centerline of gravel road and in line with a fence line running west.
- Bolton & Menk, Inc. set a 3/4" iron pipe on the west side of the stone monument.
- 26 April 2006 -Bolton & Menk, Inc. set a 2" X 2" X 16" Telspar Monument with MnDot Cap on top of said stone monument.

The evidence is not conclusive as to the true corner location, however the occupational and collateral evidence suggest that this is a reasonable location as to the corner. Additional information regarding the preparation of this certificate can be obtained by contacting: Bolton & Menk, Inc., 219 North Main Street, Fairmont, MN 56031.