

CERTIFICATE OF LOCATION OF GOVERNMENT CORNER

EAST QUARTER Corner of Section 25, Township 101N, Range 41W, 5th P.M.

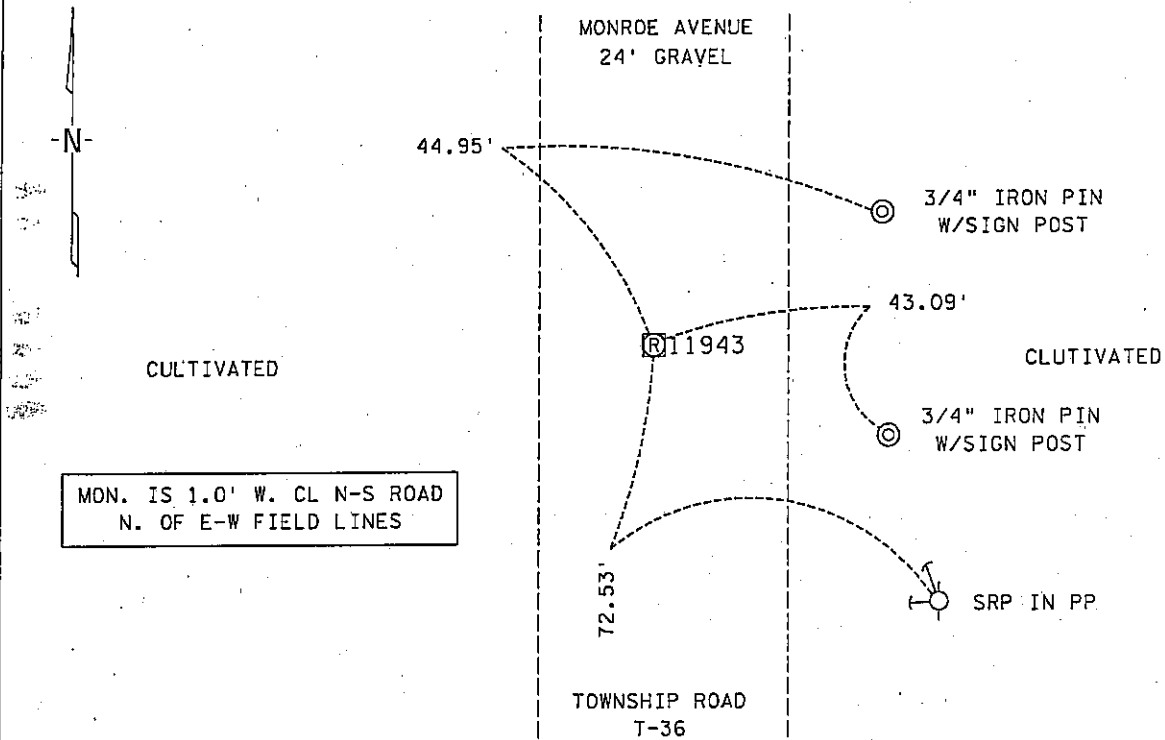
STATE OF MINNESOTA, County of NOBLES

At the corner location shown on the sketch :

- On 4 JANUARY 2001 found REBAR WITH PLASTIC CAP STAMPED RLS # 11943,
DOWN 0.3'
- left monument as found, lowered monument, removed monument (explain)
- On _____ set _____

Sketch of reference ties

SEC. 30-101N-40W



SEC. 25-101N-41W

Statement of evidence relative to this corner location is on back page

I hereby certify that this document and the data contained herein was prepared by me or under my direct supervision.

[Signature] 29 Nov. 05
Signature Date

Registration No. 22683

- Land Surveyor, Professional Engineer
- County Surveyor, County Engineer

OFFICE OF THE COUNTY RECORDER

County of NOBLES

I hereby certify that this document was filed in the Co. Recorders office at _____ .M. on the day of _____ A.D., 20

County Recorder _____

By _____, Deputy

DOCUMENT NO. _____

Statement of Evidence:

EAST QUARTER CORNER
SECTION 25, TOWNSHIP 101 NORTH, RANGE 41 WEST, 5th P.M.
NOBLES COUNTY, MINNESOTA

- 11 July 1867 - Thomas B. Walker, U.S. Deputy Surveyor, his notes read: "North Between Secs 25 & 30, Var. 11° 20' East" @ 40.00 chs. "1/4 Sec. Cor. - Post in mound", no ties.
- 15 Nov. 1993 - Moseng & Zieske Land Surveying, Inc., of Windom, Minnesota, Survey No. N9302S, by Lyle E. Moseng, RLS # 11943, for a survey of Part of the East Half of Section 30-101-40, shows that a 5/8" re-rod with cap was set at the West Quarter Corner with a distance north of 2724.45' and a distance south of 2638.05' to corresponding section corners.
- 4 Jan. 2001 - Minnesota Department of Transportation, survey crew working on TH 60, SP 5305-51, found a rebar with plastic cap stamped RLS # 11943 for the East Quarter Corner of Sec. 25-101-41, this position is in the general location of a Township Road centerline. Returning in the first week of Dec. 2003 to perform a GPS survey where a distance north of 2724.33' and a distance south of 2638.18' were computed to corresponding section corners.

The written evidence is sparse and that the conclusion drawn by Lyle Moseng cannot be disputed at this time as to the true corner location and the distance measurements agree within a reasonable amount. The collateral and occupational evidence also support Moseng's location, therefore I accept the found rebar as the section corner location. Additional information regarding the preparation of this certificate can be obtained by contacting: Survey Section, Minnesota Department of Transportation, 501 South Victory Drive, Mankato, MN 56001.