

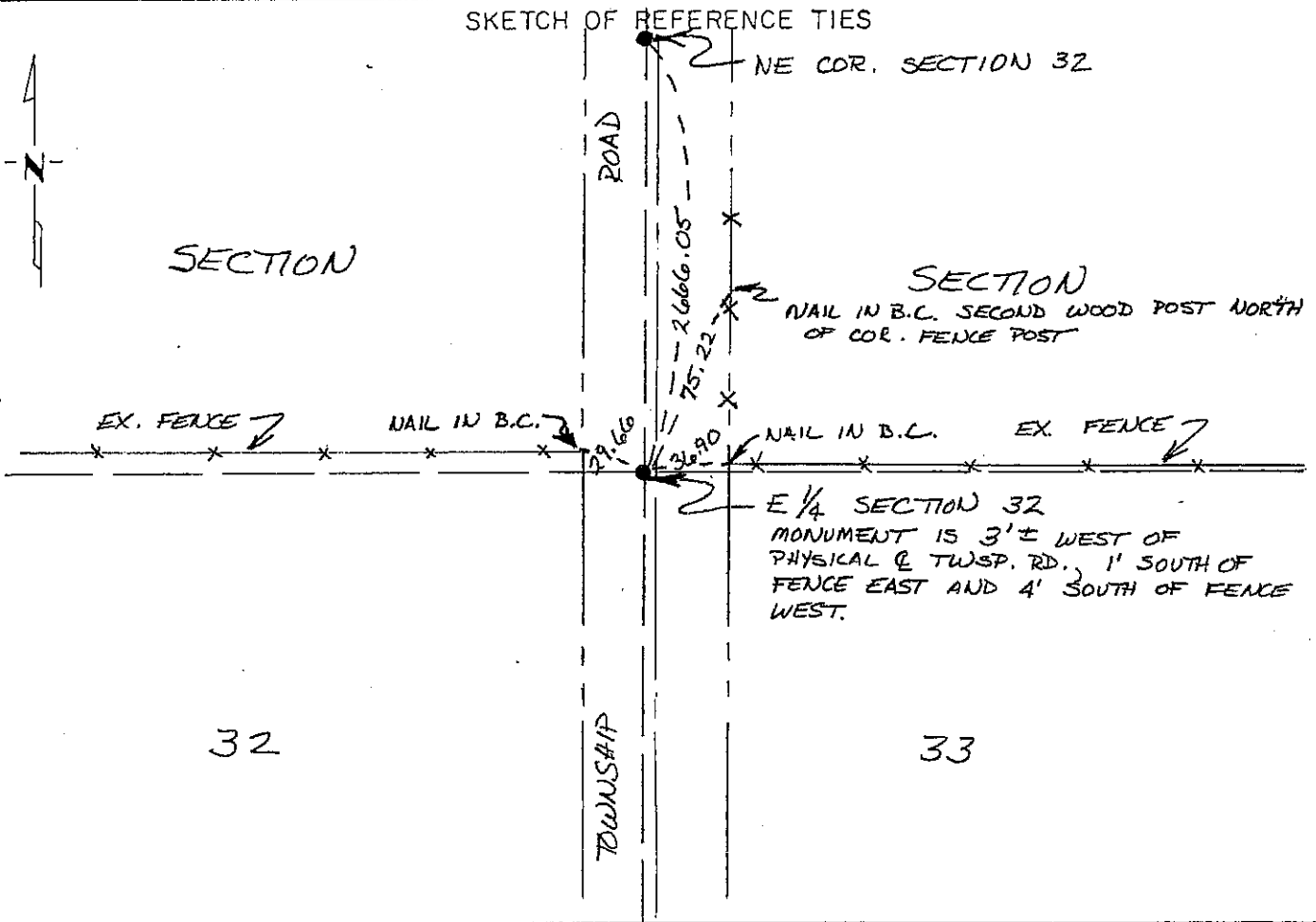
# CERTIFICATE OF LOCATION OF GOVERNMENT CORNER

EAST QUARTER Corner of Section 32, Township 101N, Range 41W, 5 P.M.  
STATE OF MINNESOTA, County of NOBLES

At the corner location shown on the sketch:

- On 11/13/90 found a 12" STONE IN PLACE 4.8' BELOW SURFACE  
DATE IN MOUND OF SMALLER STONES  
 left monument as found,  lowered monument,  removed monument (explain)
- On 11/13/90 placed a 5/8" X 30" IRON STAKE WITH PS 6706 OVER  
DATE TOP CENTER OF STONES

SIoux ENGINEERING, INCORPORATED ..... MINNesOTA SURVEY No. N 9005 S



Statement of evidence relative to this corner location is on back of page.

I hereby certify that this document and the data contained herein was prepared by me or under my direct supervision.

C. Allen Rugginal 11-30-90  
SIGNATURE DATE

Registration No. 6700  
 Land Surveyor,  Professional Engineer  
 County Surveyor,  County Engineer

COUNTY RECORDER  
OFFICE OF THE ~~RECORDS~~  
County of Nobles

I hereby certify that this document was filed in the County Recorder's office at 8:30 A. .M. on the 5th day of December A.D., 19 90

County Recorder Joyce Howard  
By \_\_\_\_\_, Deputy  
DOCUMENT NO. 242497

