

CERTIFICATE OF LOCATION OF GOVERNMENT CORNER

EAST QUARTER Corner of Section 36, Township 101N, Range 41W, 5th P.M.

STATE OF MINNESOTA, County of NOBLES

At the corner location shown on the sketch :

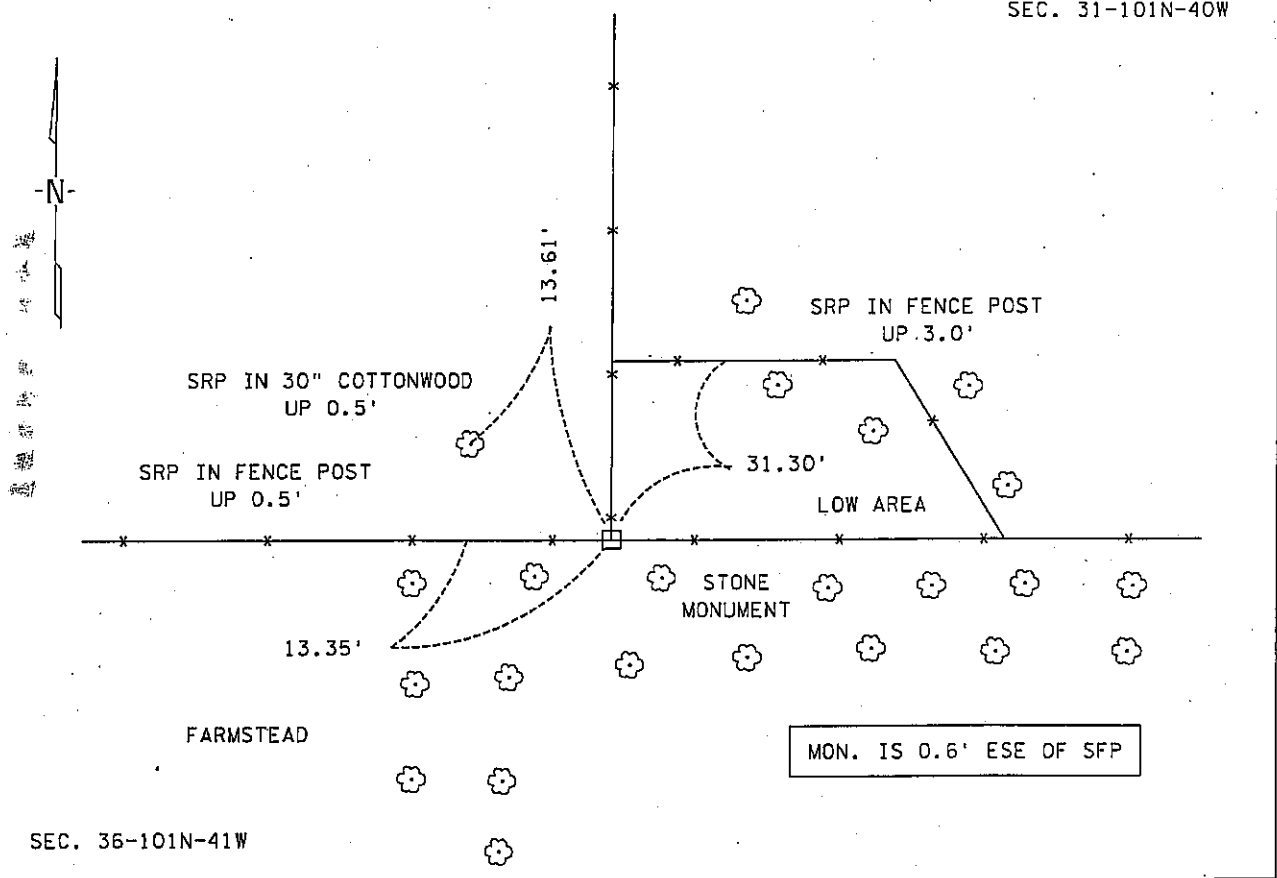
On 4 JANUARY 2001 found 20" X 24" X 4" LIMESTONE ROCK, DOWN 1.0', USED HIGHEST POINT FOR MEASUREMENT

left monument as found, lowered monument, removed monument (explain)

On _____ set _____

Sketch of reference ties

SEC. 31-101N-40W



Statement of evidence relative to this corner location is on back page

I hereby certify that this document and the data contained herein was prepared by me or under my direct supervision.

[Signature] 29 Nov. 05
 Signature Date

Registration No. 22683
 Land Surveyor, Professional Engineer
 County Surveyor, County Engineer

OFFICE OF THE COUNTY RECORDER

County of NOBLES

I hereby certify that this document was filed in the Co. Recorders office at _____ .M. on the day of _____ A.D., 20

County Recorder _____
 By _____, Deputy

DOCUMENT NO. _____

Statement of Evidence:

EAST QUARTER CORNER
SECTION 36, TOWNSHIP 101 NORTH, RANGE 41 WEST, 5th P.M.
NOBLES COUNTY, MINNESOTA

- 11 July 1867 - Thomas B. Walker, U.S. Deputy Surveyor, his notes read: "Between Secs 31 & 36, Var. $11^{\circ} 20'$ E." @ 40.00 chs. "Set 1/4 Sec. cor. Post in mound", no ties.
- Circa 1914 - Nobles County Highway Department, Bigelow Twp. Corner Book, states that a stone was in place at the West Corner of Section 31-101-40.
- 25 June 1917 - Nobles County Recorder's Office, Surveyor's Record, Volume B, Page 94, by William A. Saxon, County Surveyor, indicates that he found an 'Old Stone' at the West Quarter Corner with a distance north of 2733' and a distance south of 2652' to corresponding section corners.
- Circa 1935 - Minnesota Highway Department, Right of Way Map indicates that the East Quarter Corner of Sec. 36-101-41 is 879.0 feet west of TH 60 P.O.T. Sta. 28+39.4.
- 29 Oct. 1980 - Nobles County Recorder's Office, Document No. 245399, Certificate of Location of Gov't Corner, East Quarter Corner, Sec. 36-101-41, by G. Eldon Lober, RLS # 11933, states a survey crew found a 24" X 20" X 4" limestone rock, down 1' for the corner and that the monument is on the east-west fence line and north fence line.
- 4 Jan. 2001 - Minnesota Department of Transportation, survey crew working on TH 60, SP 5305-51, found the same 24" X 20" X 4" limestone rock for the East Quarter Corner of Sec. 36-101-41. Returning in the first week of Dec. 2003 to perform a GPS survey where a distance north of 2735.38' and a distance south of 2646.76' are computed to corresponding section corners.

The written evidence is complete back to 1914 but is not conclusive as to the original corner location, however the occupational and collateral evidence suggest that this is a reasonable location as to the corner. Additional information regarding the preparation of this certificate can be obtained by contacting: Survey Section, Minnesota Department of Transportation, 501 South Victory Drive, Mankato, MN 56001.