

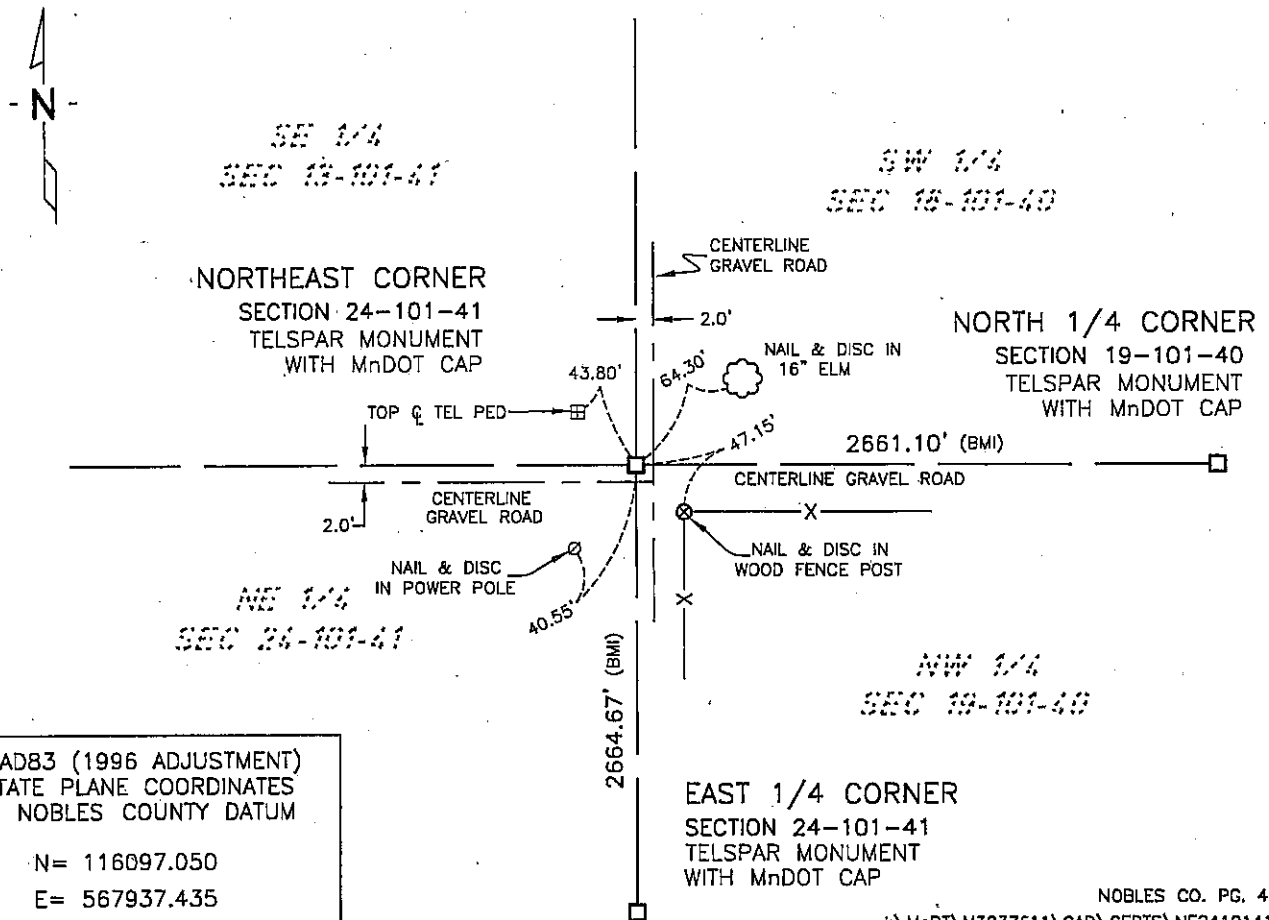
# CERTIFICATE OF LOCATION OF GOVERNMENT CORNER

NORTHEAST Corner of Section 24, Township 101, Range 41, 5th P.M.  
 STATE OF MINNESOTA, County of NOBLES

At the corner location shown on the sketch:

- On 12/1/05 found a 1"x2" Wood Stake 14" long 2.5 feet below the surface  
DATE
- left monument as found,  lowered monument,  removed monument (explain)
- On 4-26-06 placed a 3/4" Iron Pipe #43909 in place of Wood Stake and a  
DATE  
2" X 2" X 30" Telspar Monument with MnDot Cap on top of Iron Pipe

### SKETCH OF REFERENCE TIES



NAD83 (1996 ADJUSTMENT)  
 STATE PLANE COORDINATES  
 NOBLES COUNTY DATUM

N= 116097.050  
 E= 567937.435

NOBLES CO. PG. 43-45  
 I:\MnDT\M3237611\CAD\CERTS\NE2410141.DWG

Statement of evidence relative to this corner location is on back of page.

I hereby certify that this document and the data contained herein was prepared by me or under my direct supervision.

Joseph A. Halfner  
 JOSEPH A. HALFNER  
 DATE 5-15-2006

Registration No. 43909

- Land surveyor,  Professional Engineer
- County Surveyor,  County Engineer

### OFFICE OF THE COUNTY RECORDER

County of \_\_\_\_\_

I hereby certify that this document was filed in the Co. Recorders office at \_\_\_\_\_ M. on the \_\_\_\_\_ day of \_\_\_\_\_ A.D., 20\_\_\_\_

County Recorder \_\_\_\_\_  
 By \_\_\_\_\_, Deputy

DOCUMENT NO. \_\_\_\_\_

Statement of Evidence:

NORTHEAST CORNER  
SECTION 24, TOWNSHIP 101 NORTH, RANGE 41 WEST  
5th PRINCIPAL MERIDIAN, MINNESOTA

- 11 July. 1867 - T.B. Walker, U.S. Deputy Surveyor, "North between Ranges 40 and 41, Township 102, between sections 19 & 24" @ 80.00 chs. "Corner Sections 18, 19, 13, & 24 for which post in mound", no ties.
- 1947 -Nobles County Highway department records show a stake, no ties.
- 1955 -Nobles County Highway department records show a stone and an iron pin was placed, no ties.
- 1 Dec. 2005 -Bolton & Menk, Inc. survey crew found a 1"x2" Wood Stake 14" long, 2.5 feet below the surface. No evidence of stone monument or iron pin was found. Wood Stake lies in line with the centerline of gravel road running East, 2.0 feet North of the gravel centerline running West, and 2.0 feet West of the gravel centerline running North - South.
- Bolton & Menk, Inc. set a 3/4" Iron Pipe #43909 in place of Wood Stake.
- 26 April 2006 -Bolton & Menk, Inc. set a 2" X 2" X 30" Telspar Monument with MnDot Cap on top of the previously set Iron Pipe.

The evidence is not conclusive as to the true corner location, however the occupational and collateral evidence suggest that this is a reasonable location as to the corner. Additional information regarding the preparation of this certificate can be obtained by contacting: Bolton & Menk, Inc., 219 North Main Street, Fairmont, MN 56031.