

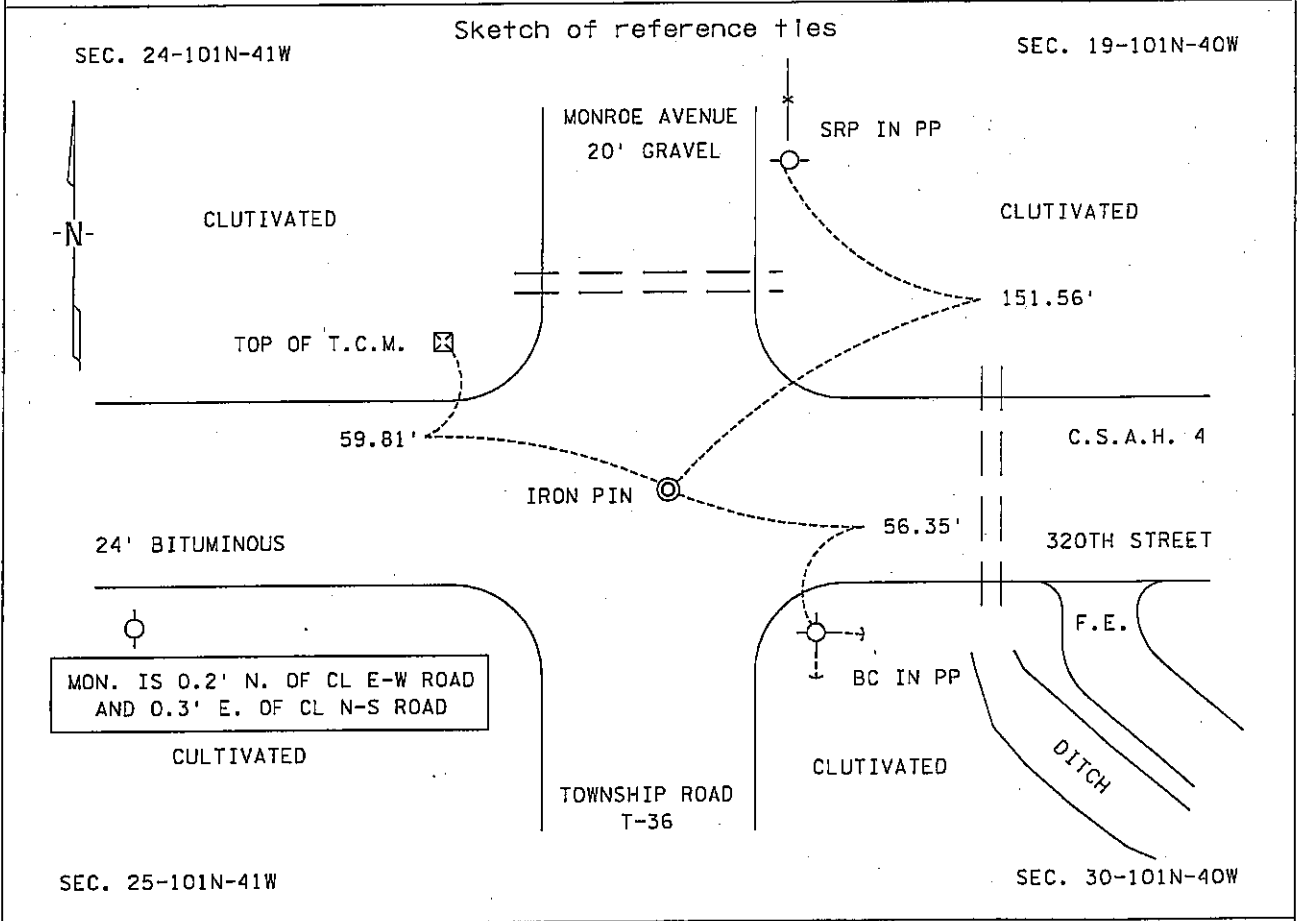
CERTIFICATE OF LOCATION OF GOVERNMENT CORNER

NORTHEAST Corner of Section 25, Township 101N, Range 41W, 5th P.M.

STATE OF MINNESOTA, County of NOBLES

At the corner location shown on the sketch :

- On 4 JANUARY 2001 found A 1/2" IRON PIN, FLUSH WITH SURFACE
- left monument as found, lowered monument, removed monument (explain)
- On _____ set _____



Statement of evidence relative to this corner location is on back page

I hereby certify that this document and the data contained herein was prepared by me or under my direct supervision.

[Signature]
 Signature _____ Date 29 Nov. 05

Registration No. 22683

Land Surveyor, Professional Engineer

County Surveyor, County Engineer

OFFICE OF THE COUNTY RECORDER
 County of NOBLES

I hereby certify that this document was filed in the Co. Recorders office at _____ .M. on the day of _____ A.D., 20____

County Recorder _____
 By _____, Deputy

DOCUMENT NO. _____

Statement of Evidence:

NORTHEAST CORNER
SECTION 25, TOWNSHIP 101 NORTH, RANGE 41 WEST, 5th P.M.
NOBLES COUNTY, MINNESOTA

- 11 July 1867 - Thomas B. Walker, U.S. Deputy Surveyor, his notes read: "North Between Secs 25 & 30, Var. 11° 20' E." @ 80.00 chs. "Cor. Secs 24, 25, 19 & 30 for which Post in mound.", no ties.
- Circa 1955 - Nobles County Highway Department, Bigelow Twp. Corner Book, states that a stake was in place at the West Quarter Corner of Section 19-101-40.
- Circa 1960 - Nobles County Highway Department, Bigelow Twp. Corner Book, states that an iron pin was in place at the West Quarter Corner of Section 19-101-40 with ties: N & D in PP 53.70' SE; N & D in TP 63.90' NW.
- Circa 1991 - Nobles County Highway Department, Bigelow Twp. Corner Book, states that a steel pin was placed after an overlay at the West Quarter Corner of Section 19-101-40 with ties: N & D in PP 56.22' SE; Top of U.G.T.C.M. 59.87' NW; N & D in CFP 64.91' SW.
- 15 Nov. 1993 - Moseng & Zieske Land Surveying, Inc., of Windom, Minnesota, Survey No. N9302S, by Lyle E. Moseng, RLS # 11943, for a survey of Part of the East Half of Section 30, shows a found ½" iron pin in place at the Northwest Corner with a distance east of 2637.17' and a distance south of 2724.45' to corresponding section corners.
- 4 Jan. 2001 - Minnesota Department of Transportation, survey crew working on TH 60, SP 5305-51, found a ½" iron pin, down 0.15' for the Northeast Corner of Sec. 25-101-41. Returning in the first week of Dec. 2003 to perform a GPS survey where a distance east of 2637.23' and a distance south of 2724.33' were computed to corresponding quarter section corners.

The written evidence is weak beyond 1955 as to the true corner location, however the distance measurements match the 1993 survey to within reason and the occupational and collateral evidence suggests that this is a reasonable location as to the corner. Additional information regarding the preparation of this certificate can be obtained by contacting: Survey Section, Minnesota Department of Transportation, 501 South Victory Drive, Mankato, MN 56001.