

CERTIFICATE OF LOCATION OF GOVERNMENT CORNER

NORTHEAST Corner of Section 32, Township 101N, Range 41W, 5 P.M.

STATE OF MINNESOTA, County of NOBLES

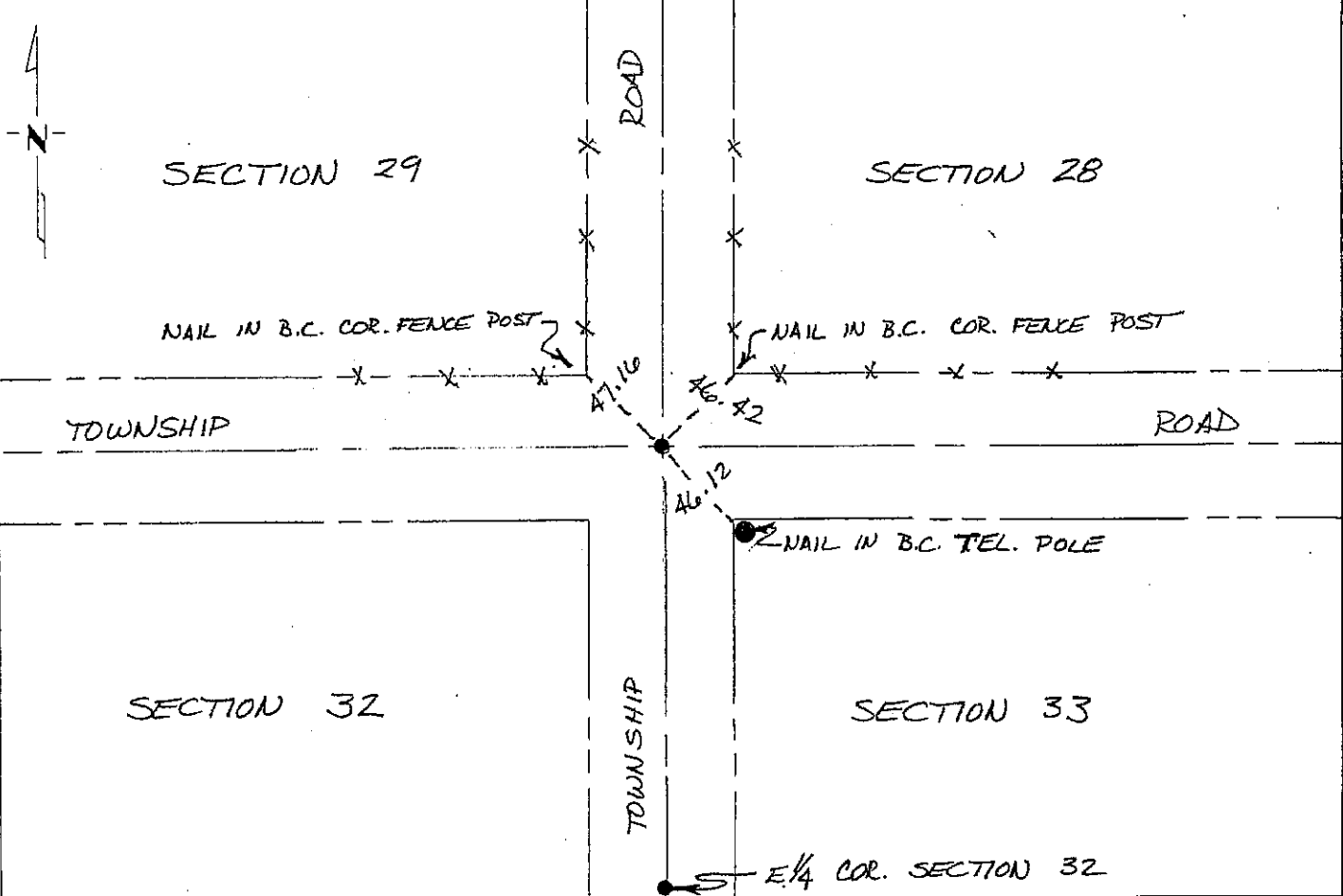
At the corner location shown on the sketch.

On 11/13/90 found a 2" IRON STAKE IN PLACE 22" BELOW SURFACE
DATE

left monument as found, lowered monument, removed monument (explain)

On 11/13/90 placed a 5/8" x 15" IRON STAKE WITH PS 6700 OVER
DATE
CENTER OF 2" STAKE

SKETCH OF REFERENCE TIES



Statement of evidence relative to this corner location is on back of page.

I hereby certify that this document and the data contained herein was prepared by me or under my direct supervision.

C. C. Ruggins 11-30-90
SIGNATURE DATE
Registration No. 6700

Land Surveyor, Professional Engineer

County Surveyor, County Engineer

OFFICE OF THE COUNTY RECORDER
County of Nobles

I hereby certify that this document was filed in the Co. Recorders office at 8:35 A.M. on the 5th day of December A.D., 1990

County Recorder Jasper Howard

By _____, Deputy

DOCUMENT NO. 242498

Fract D.L. Compared YW
Photo Tha

SURVEY NO. 1190055

SIoux ENGINEERING, INCORPORATED WINDOM, MINNESOTA

SIoux ENGINEERING, INCORPORATED

