

PREPARED BY: DGR ENGINEERING, 1302 S. UNION STREET, P.O. BOX 511, ROCK RAPIDS, IOWA 51246 (712) 472-2531

UNITED STATES PUBLIC LAND SURVEY CORNER CERTIFICATE

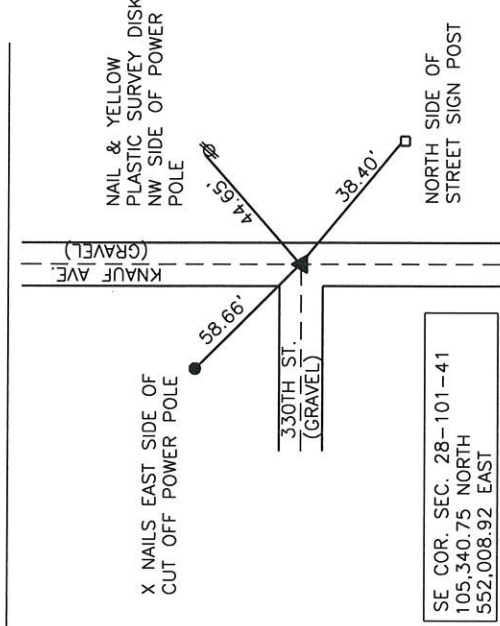
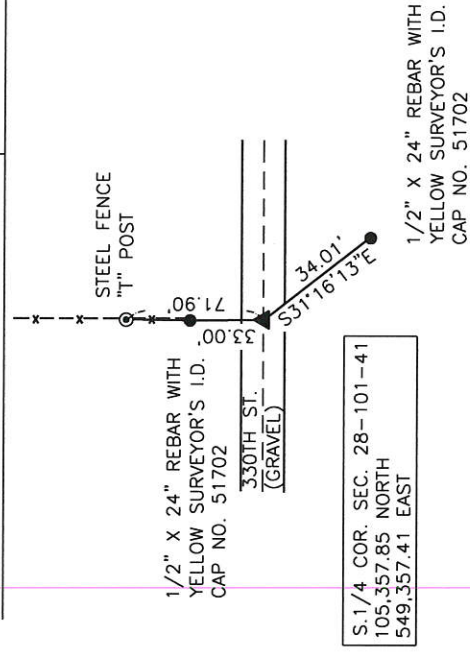
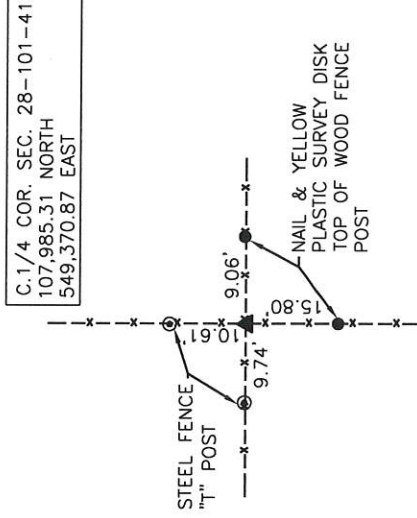
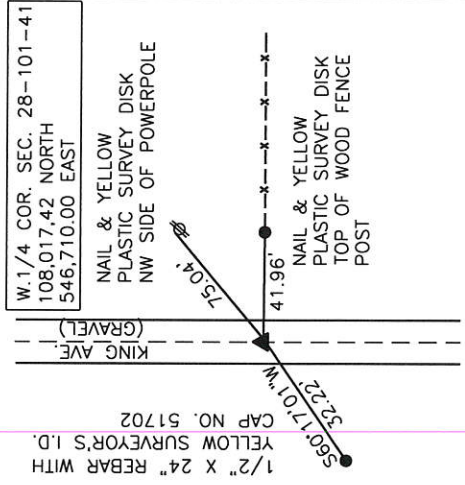
OF

Land Survey Monuments situated in Section 28, Township 101, Range 41, of the Fifth Principal Meridian, NOBLES County, MINNESOTA.

Monument Description and Remarks:

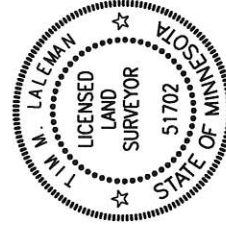
- W.1/4 CORNER- FOUND 5/8" DIA. REBAR 6" BELOW GRAVEL SURFACE NEAR C.L. GRAVEL ROAD (KING AVE.), IN LINE WITH FENCE TO EAST. USED ON PREVIOUS SURVEY IN SE1/4 SEC. 29-101-41 BY KEVIN D. JONGERIOUS.
- S.1/4 CORNER- DUG FOR STONE, FOUND NONE. SET 1/2" X 24" REBAR WITH YELLOW SURVEYOR'S I.D. CAP NO. 51702 AT MIDPOINT BETWEEN SW AND SE CORNERS OF SECTION 28-101-41. CALCULATED POSITION FALLS IN LINE WITH FENCELINE TO THE NORTH AND 2' NORTH OF CENTERLINE OF GRAVEL ROAD. CALCULATED POSITION WAS USED ON PREVIOUS SURVEY IN THE NE1/4 OF SECTION 28-101-41 BY PERRY L. ZIESKE.
- SE CORNER- FOUND 3/4" DIA. REBAR 5" BELOW GRAVEL SURFACE NEAR C.L.-C.L. GRAVEL ROAD (KNAUF AVE. & 330TH ST.), USED ON PREVIOUS SURVEY IN SW1/4 SEC. 27-101-41 BY R.V. BENDIXEN.
- CNTR SEC. CORNER- FOUND STEEL FENCE CORNER POST AT INTERSECTION OF FENCES RUNNING NORTH, SOUTH, EAST, AND WEST. SET 1/2" X 24" REBAR WITH YELLOW SURVEYOR'S I.D. CAP NO. 51702 ON SOUTH EDGE OF FENCE POST

PLAN - VIEW



I hereby certify that this land surveying document was prepared and the related survey work was performed by me or under my direct personal supervision and that I am a duly licensed Land Surveyor under the laws of the State of Minnesota.

Signature: Tim M. Laleman
Name typed or printed: TIM M. LALEMAN I.C. No. 51702
Date: 11-3-2014



SEAL

Comers	List. Section	Comers to be Indexed	Twp	Range
W.1/4 COR.	28	28	101	41
S.1/4 COR.	28	28	101	41
SE COR.	28	28	101	41
CNTR SEC. COR.	28	28	101	41