

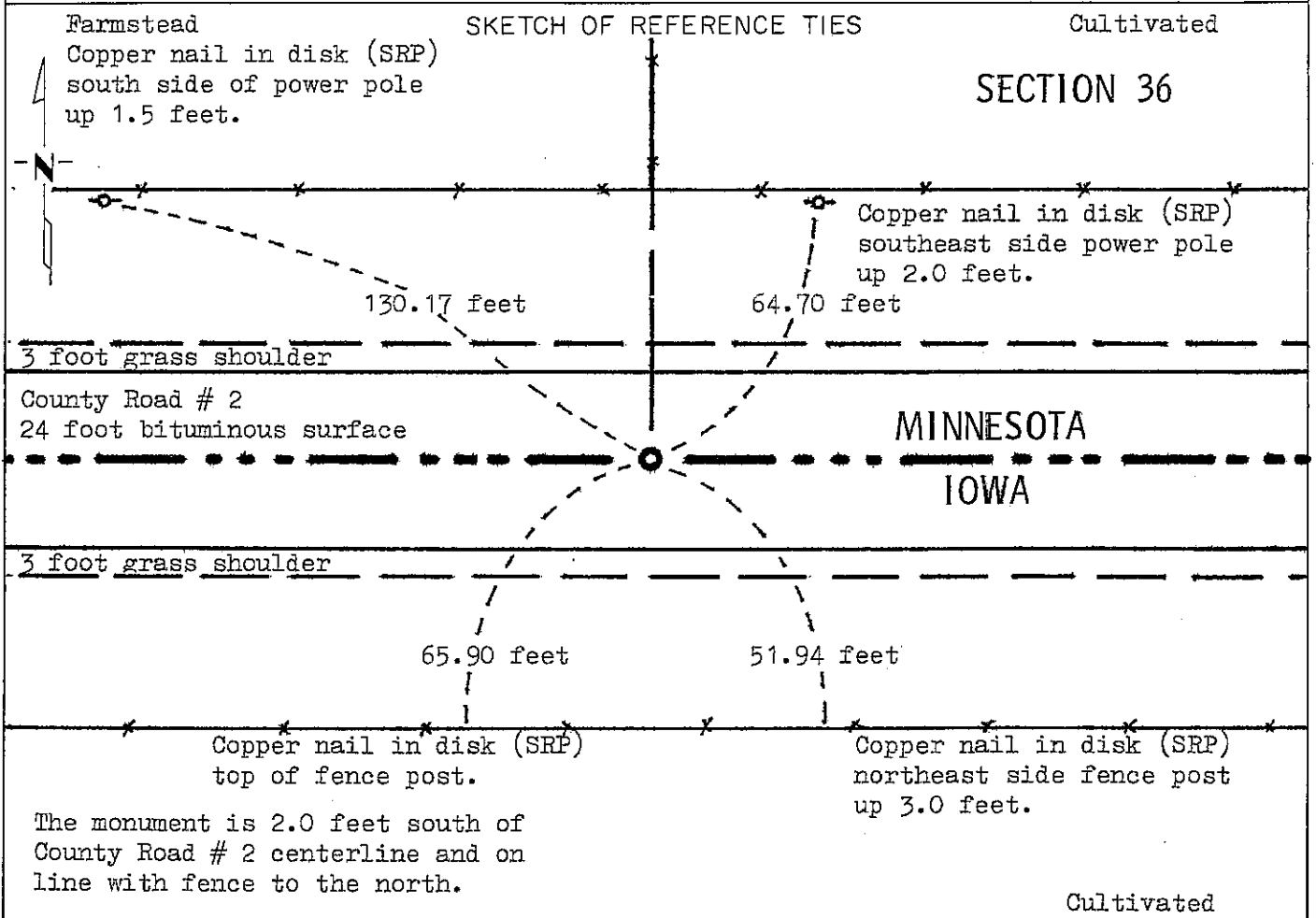
CERTIFICATE OF LOCATION OF GOVERNMENT CORNER

SOUTH QUARTER Corner of Section 36, Township 101 N, Range 41 W, 5 P.M.

STATE OF MINNESOTA, County of NOBLES

At the corner location shown on the sketch:

- On _____ found a _____ (See Statement of Evidence)
DATE
- left monument as found, lowered monument, removed monument (explain)
- On Oct. 14, 1982 placed a Minnesota Department of Transportation cast iron mon-
DATE ument with chiseled "+" on it, 0.05 feet below bituminous surface.



Statement of evidence relative to this corner location is on back of page.

I hereby certify that this document and the data contained herein was prepared by me or under my direct supervision.

S. Eldon Lober 2-4-83
SIGNATURE DATE

Registration No. 11933
 Land Surveyor, Professional Engineer
 County Surveyor, County Engineer

OFFICE OF THE COUNTY RECORDER
County of Nobles

I hereby certify that this document was filed in the Co. Recorders office at 4:25 P. M. on the 14th day of September A.D., 1991

County Recorder James Howard
By _____, Deputy
DOCUMENT NO. 245398

Statement of Evidence: South Quarter 36 T101N R41W 5th P.M.

- Aug. 7, 1852 Andrew Talcott surveyed the Iowa and Minnesota boundary from west to east, at measurement of 40.00 chains from the section corner he "Set $\frac{1}{4}$ Section post in mound of earth & sod, with trench & pits as per instructions." "Surface level wet prairie, soil first rate & excellent land for grass but too wet & flat to cultivate."
- 1914 Nobles County Highway Department land corners - - "stone set"
- 1958 Nobles County Highway Department - - Road was regraded. (There is no mention of perpetuating land corner.)
- Aug. 29, 1977 Minnesota Department of Transportation field survey crew searched for the land corner "stone" using a tractor backhoe to excavate 8 feet north and south by 18 feet east and west and 5 feet deep along the center of state line road. Found a 60 penny spike flush with bituminous surface, equidistant to section corners, and coincident to occupation lines within the contiguous sections. No evidence of original or perpetuated monument was found below the spike. The excavated material contained numerous stones of around 6 inches in diameter and appeared to be unscreened course pit run gravel that is not native to the location. The spike was replaced to the location where it was found.
- Jan. 26, 1982 George Lober - Minnesota Department of Transportation, made a search of land corner records at Nobles County Recorders office and at Nobles County Highway Department and also talked with Gary Martin of Worthington about land corners in this area. The only record found for this location was of the original stake (1852) and the stone set (1914). Neither of these were to be found in 1977 so the corner is considered to be lost. The in place spike is not on record.

I can find no evidence of the original location, survey records, or land boundaries. I therefore have used lost methods to restore this land corner. I removed spike and placed a Minnesota Department of Transportation cast iron monument.

For additional information, including field measurements and photographs, contact the Minnesota Department of Transportation in Windom.

Tract Compared
 Photo
 Fee