

CERTIFICATE OF LOCATION OF GOVERNMENT CORNER

SOUTH QUARTER Corner of Section 36, Township 101N, Range 41W, 5th P.M.

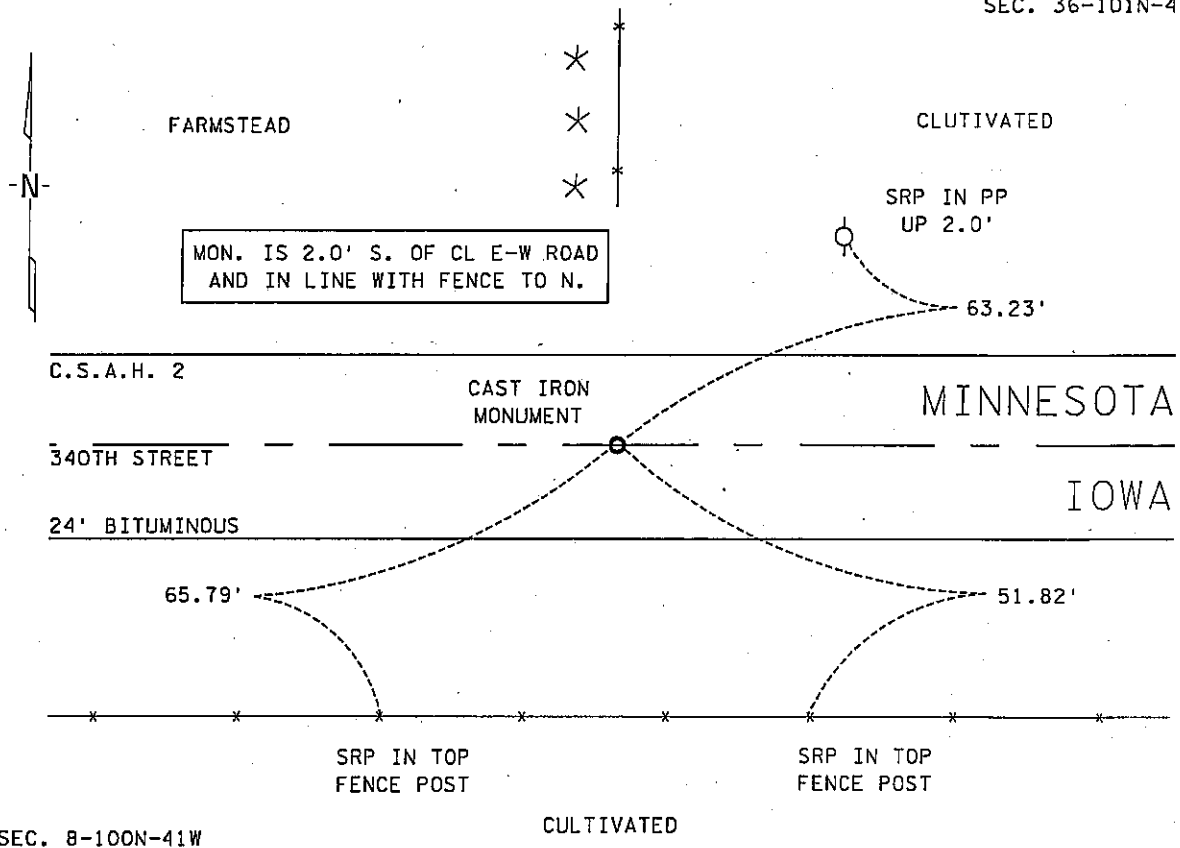
STATE OF MINNESOTA, county of NOBLES

At the corner location shown on the sketch :

- On 2 JANUARY 2001 found 2" X 2" UNISTRUT WITH MN/DOT CAST IRON CAP
- left monument as found, lowered monument, removed monument (explain)
- On _____ set _____

Sketch of reference ties

SEC. 36-101N-41W



Statement of evidence relative to this corner location is on back page

I hereby certify that this document and the data contained herein was prepared by me or under my direct supervision.

[Signature]
Signature _____ Date 29 Nov. 05

Registration No. 22683

- Land Surveyor, Professional Engineer
- County Surveyor, County Engineer

OFFICE OF THE COUNTY RECORDER

County of NOBLES

I hereby certify that this document was filed in the Co. Recorders office at _____ .M. on the day of _____ A.D., 20

County Recorder _____

By _____, Deputy

DOCUMENT NO. _____

Statement of Evidence:

SOUTH QUARTER CORNER
SECTION 36, TOWNSHIP 101 NORTH, RANGE 41 WEST, 5th P.M.
NOBLES COUNTY, MINNESOTA

- 7 Aug. 1852 - Captain Andrew Talcott, Principle Deputy Surveyor, his notes read: "East on South Side of Section 36, Variation 11° 45' East." @ 40.00 chs. "Set 1/4 Section Post in mound of earth & sod with Trench & Pits as per instructions", no ties.
- Circa 1914 - Nobles County Highway Department, Ransom Twp. Corner Book, shows a "Set stone" for the South Quarter Corner of Sec. 36-101-41.
- 30 June 1917 - Chicago, St. Paul, Minneapolis & Omaha Railway Company, Right of Way and Track Map, St. Paul to Sioux City, shows the south line of the SE ¼ of Sec. 36-101-41 at station 3498+77.0 which is also the state line.
- Circa 1958 - Nobles County Highway Department, Road was re-graded, no mention of what happened to the corner.
- 29 Aug. 1977 - Minnesota Department of Transportation, Certificate of Location of Gov't Corner, South Quarter Corner, by G. Eldon Lober, RLS # 11933, states a survey crew working on Monumentation Plat No. 53-M3, excavated with a tractor backhoe searched an area 8' X 18' X 5' deep at centerline of road. Found 60d nail flush with bituminous surface at occupation lines. The nail was tied and no other evidence of a monument was found.
- 14 Oct. 1982 - Nobles County Recorder's Office, Document No. 245398, Certificate of Location of Gov't Corner, South Quarter Corner, Sec. 36-101-41, by G. Eldon Lober, RLS # 11933, states that a survey crew returned to the area after checking with public and private records and set a Mn/DOT cast iron monument, down 0.05' for this corner. This was follow up work to the 1977 certificate.
- 2 Jan. 2001 - Minnesota Department of Transportation, survey crew working on TH 60, SP 5305-51, found the previously identified Mn/DOT cast iron monument for the South Quarter Corner of Sec. 36-101-41. Returning in the first week of Dec. 2003 to perform a GPS survey where a distance east of 2652.22' was computed to the corresponding section corner.

The written evidence is conclusive that the true corner location has not been preserved and that the lost location is the best possible position for this corner. Additional information regarding the preparation of this certificate can be obtained by contacting: Survey Section, Minnesota Department of Transportation, 501 South Victory Drive, Mankato, MN 56001.