

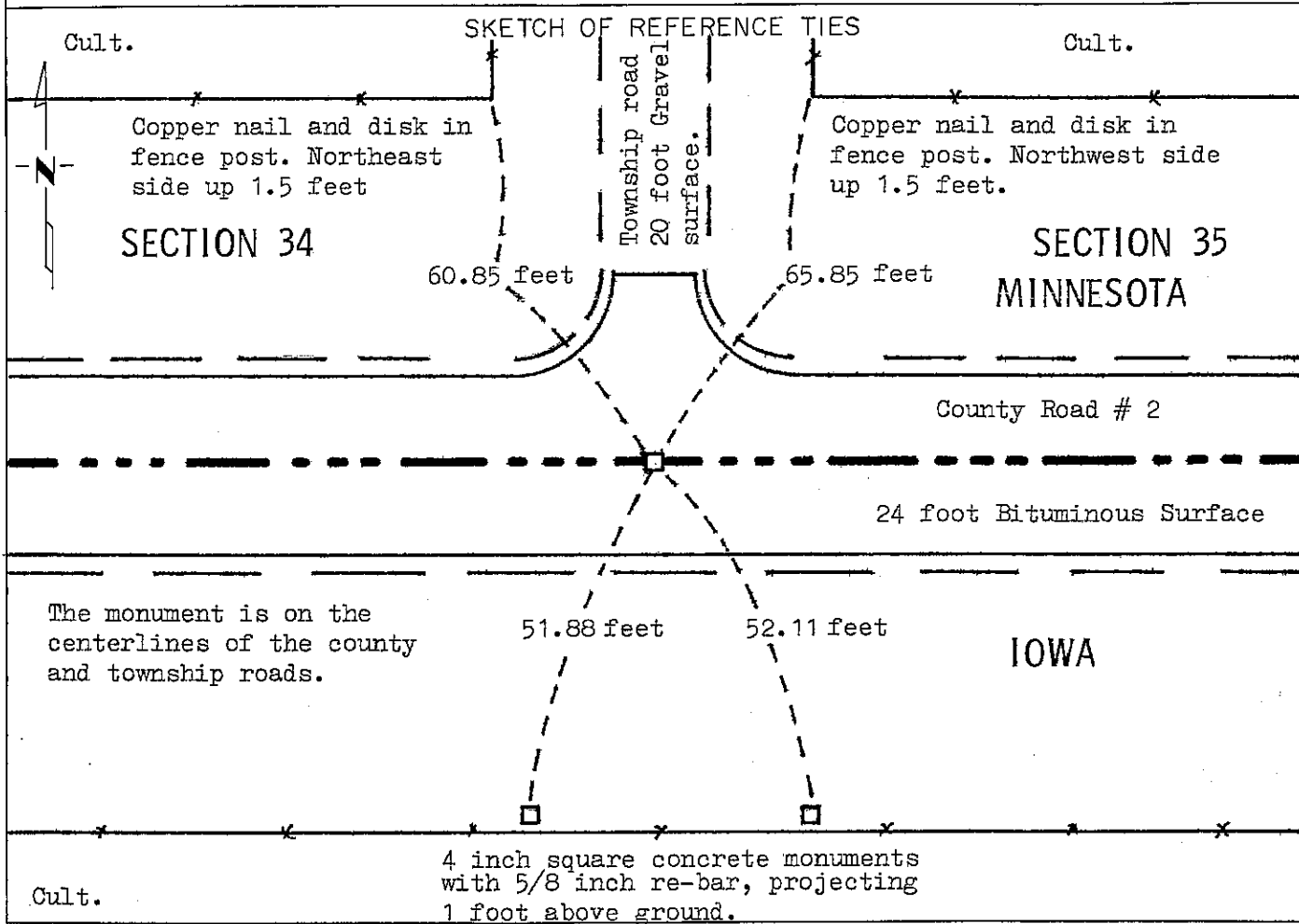
CERTIFICATE OF LOCATION OF GOVERNMENT CORNER

SOUTHEAST Corner of Section 34, Township 101 N, Range 41 W, 5 P.M.

STATE OF MINNESOTA, County of NOBLES

At the corner location shown on the sketch:

- On Sep. 29, 1982 found a 2 1/2 inch by 7 inch by 16 inch flat granite stone, _____
DATE placed by Talcott in August of 1852. (See statement on back side)
- left monument as found, lowered monument, removed monument (explain)
- On _____ placed a _____
DATE



The monument is on the centerlines of the county and township roads.

Statement of evidence relative to this corner location is on back of page.

I hereby certify that this document and the data contained herein was prepared by me or under my direct supervision.

S. Ellen Lober 2-4-83
SIGNATURE DATE

Registration No. 11933

- Land Surveyor, Professional Engineer
- County Surveyor, County Engineer

OFFICE OF THE COUNTY RECORDER

County of Nobles

I hereby certify that this document was filed in the Co. Recorders office at 4:05 P. .M. on the 6th day of September A.D., 1991

County Recorder Jane Howard

By _____, Deputy

DOCUMENT NO. 245394

92

Statement of Evidence: Southeast Corner 34 T101N R41W 5th P.M.

Aug. 7, 1852 Andrew Talcott, Surveyor, Iowa & Minnesota Boundary "Set a post & deposited a flat granite stone 16 X 7 X $2\frac{1}{2}$ inches in mound of earth & sod with trench & pits as per instructions for corner to sections 34 & 35. Surface slightly rolling prairie. Soil first rate and excellent farming & grass land."

Nobles County Highway land corners - - Stone 1936, 1956 & 1958. Placed wood stake 1958, a notation on copy of original Ransom Township plat reads "stone" and "stone 16 X 7 X $2\frac{1}{2}$ " (stone is noted twice)

Sep. 29, 1982 Minnesota Department of Transportation, field survey crew using a tractor backhoe, dug for and found a 4 inch square by 20 inches long concrete monument with a 5/8 inch re-bar in it. Directly below the concrete monument we found the $2\frac{1}{2}$ inch by 7 inch by 16 inch flat granite stone standing on end. The top of the square concrete monument was down 0.3 feet and the top of the stone monument was down 2.25 feet, below the bituminous surface.

An analysis of the Statement of Evidence and the field measurements indicate that the in-place location of the stone provides a continuous chain of perpetuation of the original Public Land Survey corner.

For additional information, including field measurements and photographs, contact the Minnesota Department of Transportation in Windom.

Tract T. L. Compas
 Photo T. L.
 Fee nc