

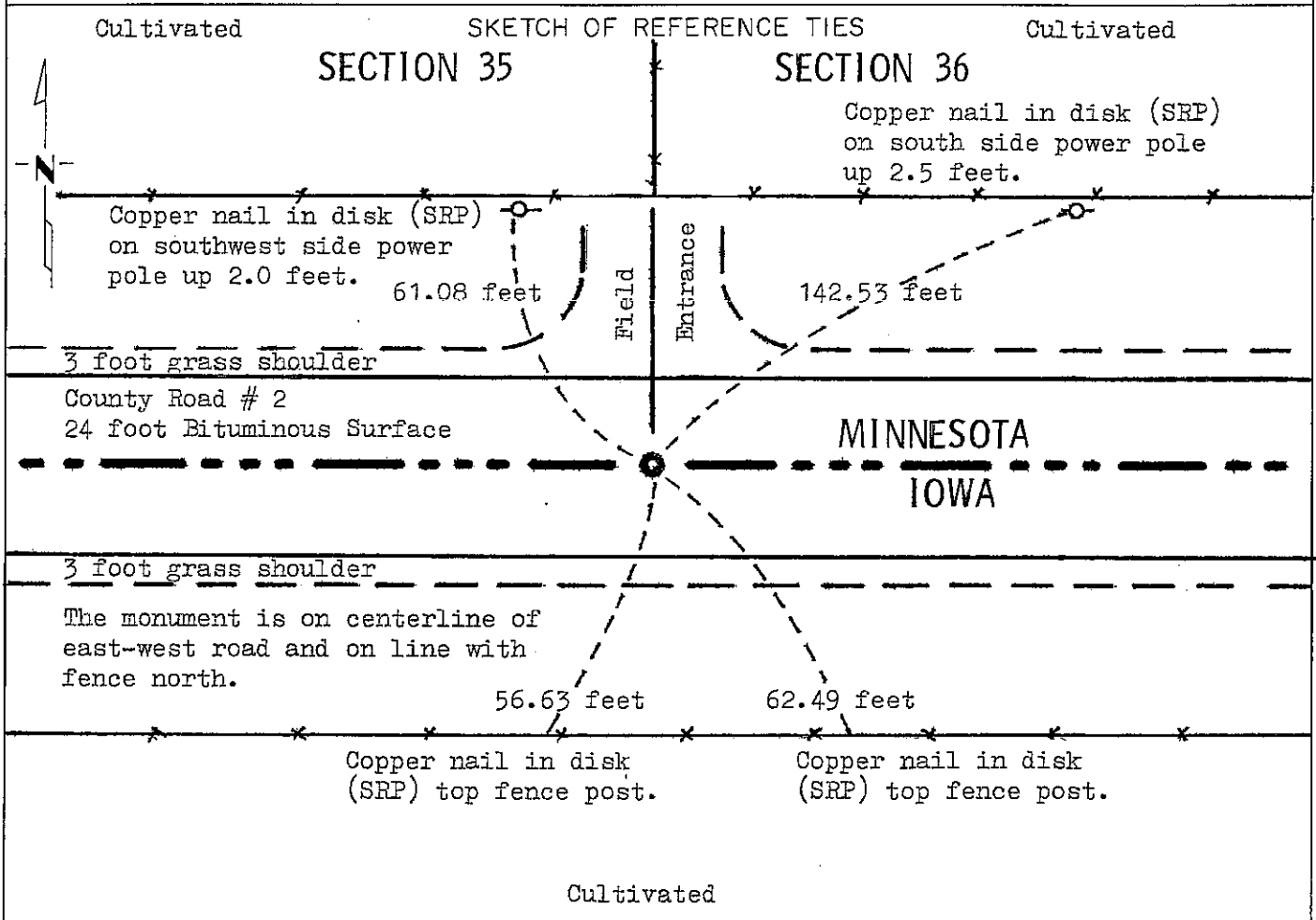
# CERTIFICATE OF LOCATION OF GOVERNMENT CORNER

**SOUTHEAST** Corner of Section 35, Township 101 N, Range 41 W, 5 P.M.

STATE OF MINNESOTA, County of NOBLES

At the corner location shown on the sketch:

- On DATE Sep. 1, 1977 found a 1 inch by 2 inch by 14 inch over 1 inch by 2 inch by 13 inch wooden stakes, down 3.0 feet.
  - left monument as found,  lowered monument,  removed monument (explain)
- On DATE Sep. 1, 1977 placed a Minnesota Department of Transportation cast iron monument, flush with bituminous surface.



Statement of evidence relative to this corner location is on back of page.

I hereby certify that this document and the data contained herein was prepared by me or under my direct supervision.

S. Eldon Lober 2-4-83  
SIGNATURE DATE

Registration No. 11933  
 Land Surveyor,  Professional Engineer  
 County Surveyor,  County Engineer

OFFICE OF THE COUNTY RECORDER  
County of Nobles

I hereby certify that this document was filed in the Co. Recorders office at 4:15 P. .M. on the 10th day of September A.D., 1991

County Recorder James Howard  
By \_\_\_\_\_, Deputy  
DOCUMENT NO. 245396

Statement of Evidence: Southeast Corner 35 T101N R41W 5th P.M.

- Aug. 7, 1852 Andrew Talcott, surveyed south boundary of Minnesota, "Set a post in mound with trench and pits as per instructions for corner to sections 35 & 36." "Surface level prairie inclining to be wet & marshy excellent for grass, soil first rate."
- 1956 Nobles County Highway land corners - - Iron pin, 1956 & 1958, placed wood stake 1958.
- sep. 1, 1977 George Koens and crew, for Minnesota Department of Transportation, using a tractor backhoe found a 1 inch by 2 inch by 14 inch wooden stake over a 1 inch by 2 inch by 13 inch wooden stake down 3.0 feet at the intersection of T road east, west and north. Nothing was found below the stakes. To perpetuate such location he left stakes as found and placed a Minnesota Department of Transportation cast iron monument directly over the stakes and flush with bituminous pavement at center of state line road.

The in-place location of the wooden stakes is compatible with the occupation lines within the section. An analysis of the Statement of Evidence and the field measurements indicate that the wooden stakes are in a reasonable location. I can find no other evidence or records to disrupt its location, I therefore accept the monument as the location of the land corner.

For additional information, including field measurements and photographs, contact the Minnesota Department of Transportation in Windom.

Tract 35 Compared dm  
 Photo ms  
 Fee nc